



## 201 Dows Road, OWEN, SA 5460

### Idyllic Country Setting – No Close Neighbours

This 4 bedroom home is set in a private country setting on a large 7.58 acre (3.07 HA) allotment in the Rural Zone on the outskirts the country township of Owen.

The home features lounge with combustion heater, split system air conditioner and a rural outlook, country kitchen with garden window, formal dine, bathroom and laundry.

There is a full-length front verandah, a large rear verandah/ pergola with a lovely fernery, a large area of vegetable garden beds, two storage sheds and a cubby for the kids.

A big feature of the property is the 18m x 9m Shed with concrete floor, power and a mezzanine floor being perfect for storage for tradies, to work from home, hobbies or car restoring.

The balance of the land is in one main paddock and there are two old horse stables, rainwater storage is via 8 water tanks, and the property has mains electricity.

**TYPE:** For Sale

**INTERNET ID:** 80P4975

#### SALE DETAILS

**\$649,000 - \$675,000**

#### CONTACT DETAILS

**Elders Real Estate Gawler**

37 Murray Street

GAWLER, SA

08 8522 1988

RLA: 64256

**Jeff Lind**

0413 186 214

Properties set in a rural location with neighbours at a distance are hard to find so to book your move to quiet and affordable country living call Jeff Lind now on 0413186214.

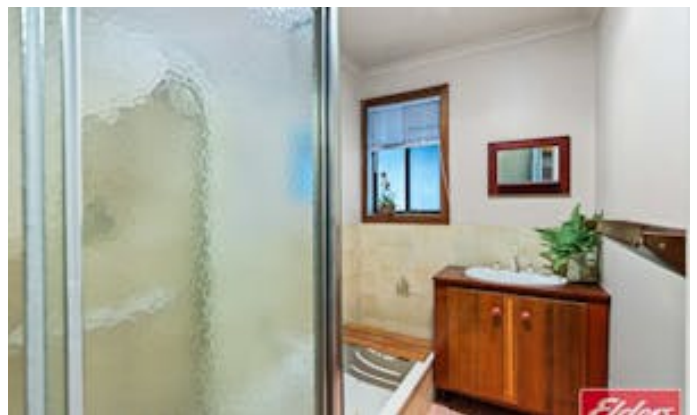
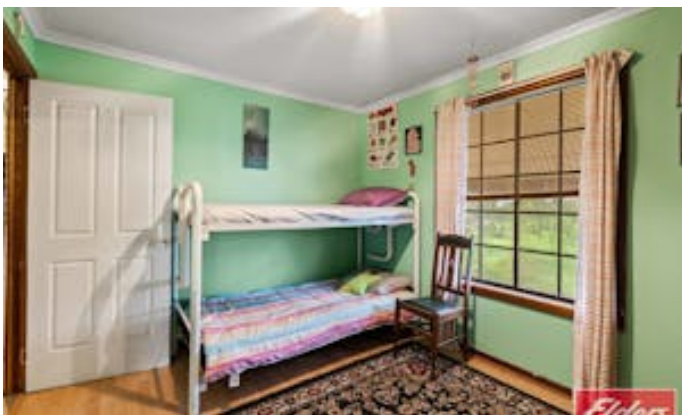
Please note: This property will not be open for inspection until Saturday 11th of July at a time to be advised.

Ready to make an offer? Head to [eldersgawler.com.au](http://eldersgawler.com.au), select the property, and click the 'Make an Offer' tab to submit your offer online in just a few steps.

All information contained herein is gathered from sources deemed to be reliable. However, we cannot guarantee its accuracy and interested persons should seek their own enquiries.

- Land Area 7.58 acres
- Bedrooms: 4
- Bathrooms: 1
- 4 car garage









201 Dows Road, OWEN



Living:	130.01SQ.M
Verandah:	26.63SQ.M
Pergola:	31.90SQ.M
Shed:	219.80SQ.M
Porch:	5.80SQ.M
<b>TOTAL:</b>	<b>414.14SQ.M</b>

This Drawing is for illustration purposes only. All measurements are internal and approximate. Details intended to be relied upon should be independently verified.

