



1 Charles Fry Court, WILLIAMSTOWN, SA 5351

Large Allotment, Side Access & Shed

Set on a generous 878sqm allotment in a quiet and established location, this well-presented home offers comfortable family living with the added benefit of valuable side access, shedding and plenty of room for extra vehicles, a caravan or boat.

Freshly painted throughout and complemented by near-new carpets and blinds, the home is ready to move in and enjoy. Offering three bedrooms and a versatile two-way bathroom, the layout includes a formal living room along with a spacious open plan kitchen, family and meals area that forms the heart of the home.

Year-round comfort is assured with four split system air conditioners, while outside you'll appreciate the established gardens, expansive lawn area and side access through to the shed, providing excellent storage and flexibility for hobbyists, tradies or those simply needing extra space.

Positioned in the picturesque township of Williamstown, you'll enjoy the relaxed country lifestyle the area is renowned for while remaining within easy reach of local amenities, Gawler and the Barossa Valley.

TYPE: For Sale

INTERNET ID: 80P4979

SALE DETAILS

\$650,000 - \$695,000

CONTACT DETAILS

Elders Real Estate Gawler

37 Murray Street

GAWLER, SA

08 8522 1988

RLA: 64256

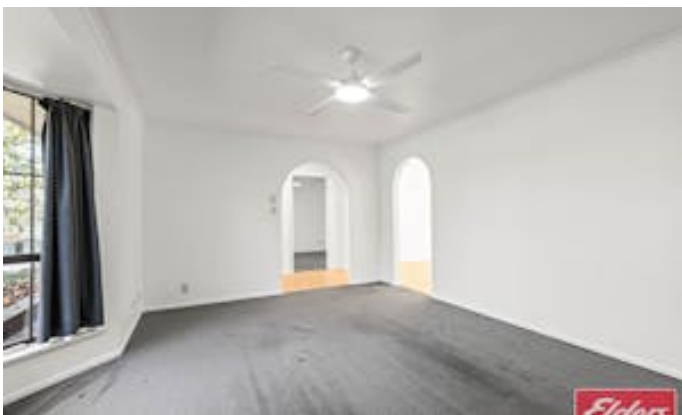
Christopher Hurst

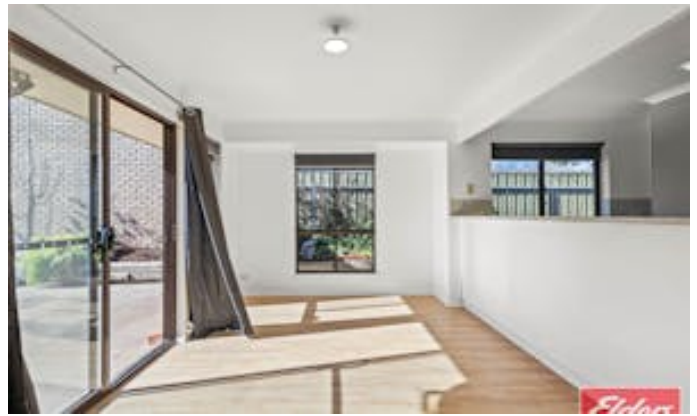
0412 897 020

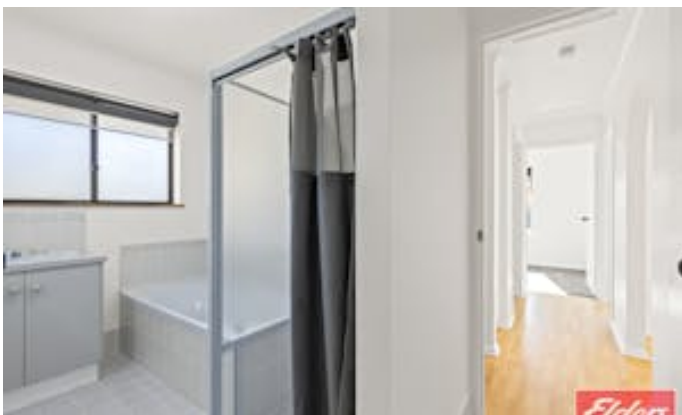
Ready to make an offer? Head to eldersgawler.com.au, select the property, and click the 'Make an Offer' tab to submit your offer online in just a few steps.

All information contained herein is gathered from sources deemed to be reliable. However, we cannot guarantee its accuracy and interested persons should seek their own enquiries.

- Land Area 878.00 square metres
- Bedrooms: 3
- Bathrooms: 1
- Single carport

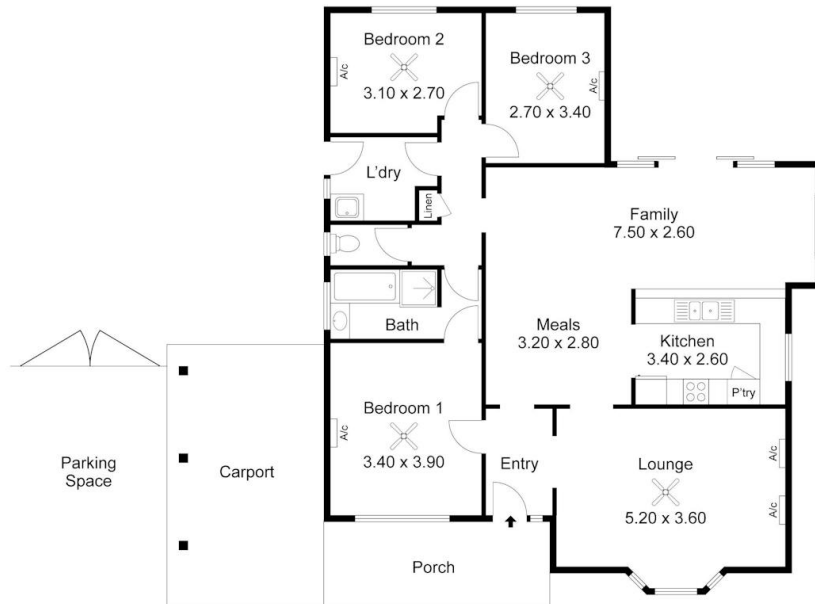
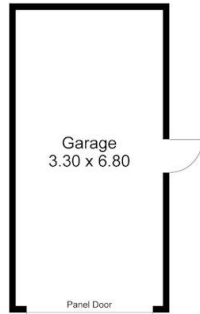








1 Charles Fry Court, WILLIAMSTOWN



Living:	120.20SQ.M
Porch:	10.60SQ.M
Carport:	22.70SQ.M
Garage:	22.40SQ.M
TOTAL:	175.90SQ.M



This Drawing is for illustration purposes only. All measurements are internal and approximate. Details intended to be relied upon should be independently verified.

PRODUCED BY
urban creative