



9 Paxton Street, WILLASTON, SA 5118

Versatile Industrial Warehouses

Two modern warehouse facilities with immense profile to Paxton Street, Willaston which can be leased together or separately.

Previously configured as a well-established dance school for over 15 years, the property is now offered for lease presenting outstanding flexibility for a range of uses.

A rare opportunity to secure a high-quality industrial foothold in the rapidly growing Gawler region.

Key features:

- 927sqm* site area
- Warehouse 1: 185sqm*
- Warehouse 2: 182sqm*
- Modern and professional office areas plus kitchen/bathrooms

TYPE: For Lease

INTERNET ID: 80P4994

RENTAL DETAILS

Rent / Lease:

[Contact Agent](#)

CONTACT DETAILS

Elders Real Estate Gawler

37 Murray Street

GAWLER, SA

08 8522 1988

RLA: 64256

Jackson Dare

0423 771 611

- Secure site and additional rear yard with garden shed
- Air-conditioned office and warehouse/studio areas
- 3-phase power and NBN available
- High clearance roller doors to front and sliding doors to side
- Fully fenced and secure site with 12 car parks
- Great exposure and visibility to Paxton Street
- Zoning: Employment (Z1501) - E
- Excellent access to Sturt Highway and Northern Expressway to Adelaide.

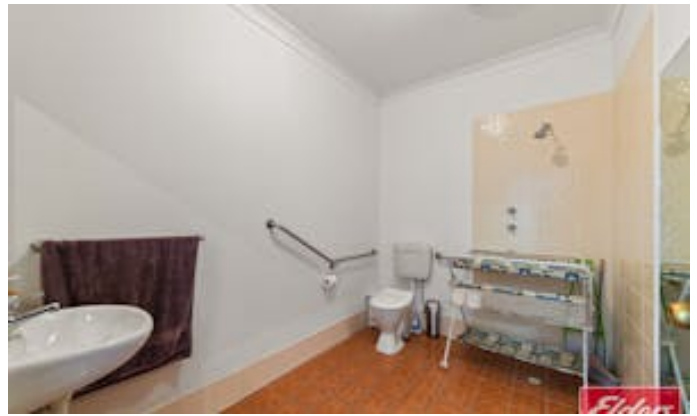
For further information contact Jackson Dare 0423 771 611

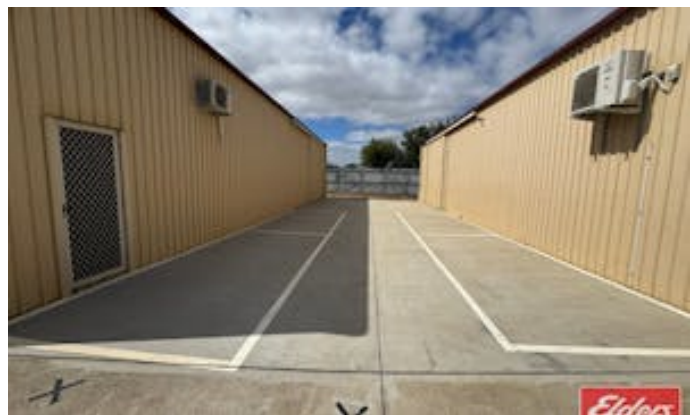
All information contained herein is gathered from sources deemed to be reliable. However, we cannot guarantee its accuracy and interested persons should seek their own enquiries.

*approximately

- Land Area 927.00 square metres
- Commercial Type:
- Building Area: 367.00 square metres









Lot 51 Paxton Street,
WILLASTON



Warehouse 1 (Right): 185 SQ.M
 Warehouse 2 (Left): 182 SQ.M
TOTAL: 367.00SQ.M



This Drawing is for illustration purposes only. All measurements are internal and approximate. Details intended to be relied upon should be independently verified.