

258 The Esplanade, SPEERS POINT, NSW 2284

Exclusive Address with Breathtaking Panoramic Views

This character filled c.1940's art deco style home marries the charm of yesteryear with modern conveniences. The architecture and beautifully presented home are surpassed only by the stunning lake views. This home will satisfy the most discerning buyer.

On the ground floor level you are welcomed by a charming entry foyer with floating timber floor, and you make your way past a cosy study with beautiful outlook into the intimate dining room. Two bedrooms are located on this level with one including an ensuite, the main bathroom embraces simple elegance, through a recently updated modern kitchen, and into a generous open plan living area. The ultimate space for family living.

The upper level boasts two oversized bedrooms with the main featuring an ensuite and walk in robe, and the comfort and convenience of your very own home theatre. The highlight of this home is the spacious entertaining area which features a luxurious spa, convenient change room, an abundance of natural light, and a balcony, all enjoying spectacular views of Lake Macquarie.

Enjoying low maintenance and relaxed lakeside living, you can keep an eye on the lake's activity from the comfort of home or head down to the waterfront walking paths

The particulars contained herein are supplied for information only and shall not be taken as a representation in any respect on the part of the vendor or its agent. Interested parties should contact the nominated person or office for full and current details.

TYPE: Sold

INTERNET ID: 92P1070

SALE DETAILS

Guide \$1,700,000

CONTACT DETAILS

**Elders Real Estate
Newcastle & Lake
Macquarie**

1/125 Elder Street
LAMBTON, NSW
02 4952 3744

Scott Richardson
0407 432 614

and be amongst all the action of Warners Bay's foreshore. This home is the perfect combination of luxury and location.

Close to several well-regarded schools including sought after Speers Point Public School (2 mins) and Lake Macquarie High School (6 mins), The Esplanade Shopping Village (3 mins), Speers Point Park and Pool (3 min), major shopping centres and nearby cafes, while being an easy drive from the Pacific Motorway, Hunter Expressway and into Newcastle's CBD.

The features of this home are as follows:

- 4 Bedrooms (main with ensuite & walk in robe, minor bedroom with ensuite)
- Study
- 3 Bathrooms - Main with Shower, Spa, Toilet & Double Vanity
- Lounge Room
- Formal Dining Room
- Modern Kitchen
- Theatre Room
- Laundry
- Entertaining Area with Spa, Change Room & Spectacular Views
- Balcony enjoying Panoramic Lake Views
- High Ceilings
- Ducted Air Conditioning to upstairs rooms & downstairs living area, Split System Air Conditioning elsewhere
- Ceiling Fans
- Double Garage with Automatic Door
- Double Carport
- Double Glazed Windows to Study, Entry, Dining & Bedrooms
- Secure Driveway
- Driveway Resurfaced
- Freshly Painted Internally
- Floating Timber Floorboards
- Bluetooth Illuminated Mirrors in all Bathrooms
- Close to Newcastle University, Hospitals, Shops, Schools and Transport
- 512msq block

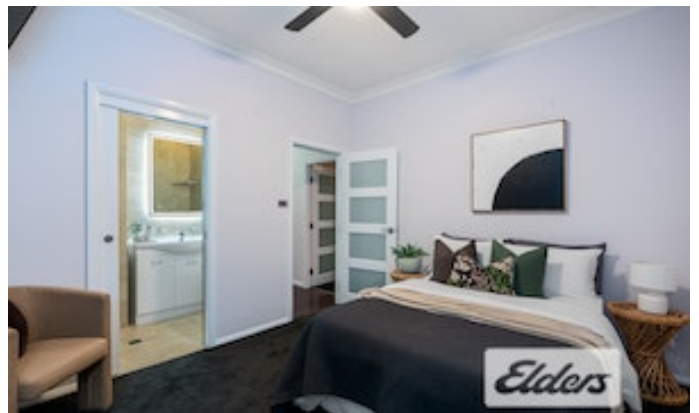
This property offers a rare opportunity to purchase a truly unique home in one of our regions most popular and beautiful suburbs.

A contract for sale and pest and building reports are available for your information.

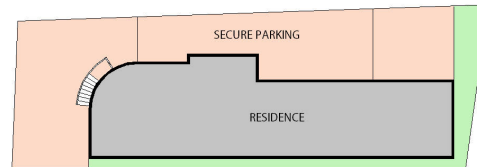
The particulars contained herein are supplied for information only and shall not be taken as a representation in any respect on the part of the vendor or its agent. Interested parties should contact the nominated person or office for full and current details.

- Land Area 512.00 square metres
- Bedrooms: 4
- Bathrooms: 3
- Double garage
- Double carport

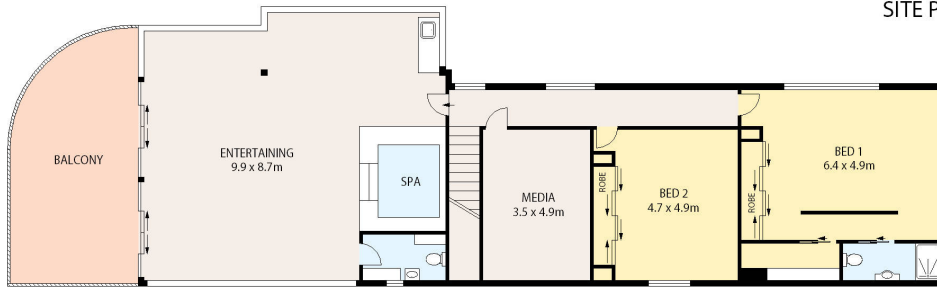




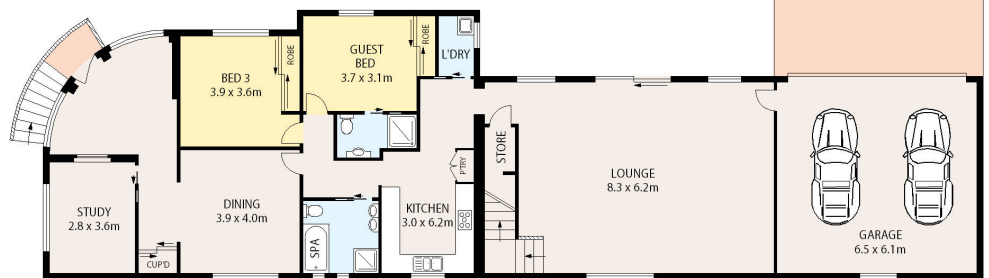




SITE PLAN (NOT TO SCALE)



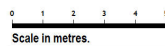
UPPER LEVEL



ENTRY LEVEL



258 The Esplanade, Speers Point



Scale in metres.

Floor and site plans are provided for marketing purposes only. Measurements are approximate and not to scale. Interested persons should rely on their own enquiries.

