



## 19483 Pacific Highway, MOORLAND, NSW 2443

SUPERCHARGE YOUR COUNTRY LIFESTYLE

**0.50 hectares, 1.23 acres**

Located on the beautiful Mid Coast and sitting within an easy 30 minute drive from Port Macquarie turn off or just 25 minutes from Taree this immaculate home and acreage must be inspected to fully appreciate all that it has to offer.

There is not a blade of grass out of place on this 4967 sq metre (1.2 acres) property! Everything from the home, in ground pool, shedding and many extras is immaculate and presented to please by proud owners.

Features:-

- \* Extremely well maintained three bedroom family home. Low maintenance brick veneer and iron roof construction.
- \* Spacious main living room is ideal for larger furniture and enjoys loads of natural light via large windows.
- \* Completely refurbished main bathroom. All bedrooms have built in robes & ceiling fans.

**TYPE:** Sold

**INTERNET ID:** 93P1588

**SALE DETAILS**

**\$750,000**

**CONTACT DETAILS**

**Troy Loretan**  
0400 530 269

\* Well designed kitchen offers a mile of cabinetry and bench space and has an adjoining dining area.

\* Ducted air conditioning services the entire home. You won't struggle with the hot or cold weather here!

\* Enormous covered outdoor entertaining area. Just perfect for summertime BBQ's, parties or a wet weather play area for children. Use this outdoor space all year round.

\* Inviting in ground saltwater pool with a large pool yard and shaded sitting area.

\* Very handy high roofed four car carport. A terrific spot to cover your caravan, motorhome, boat and other boys toys'.

\* 3 kW solar panel system makes for cheaper energy costs. Long frontage to Pipeclay Creek and loads of established trees to attract the birdlife.

\* School aged children in your family? Moorland Public School is a mere 600 metres away.

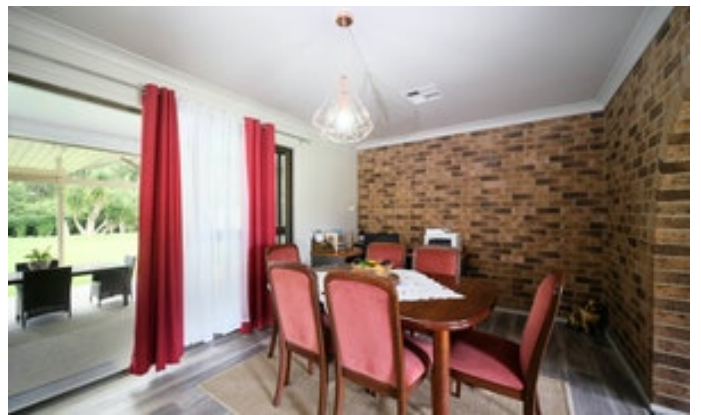
This property would make an ideal base for active retirees who would like to be within easy striking distance to major towns, the magnificent coastline of the Crowdy Bay National Park and sits just a tad over 3 hours from Sydney's northern suburbs.

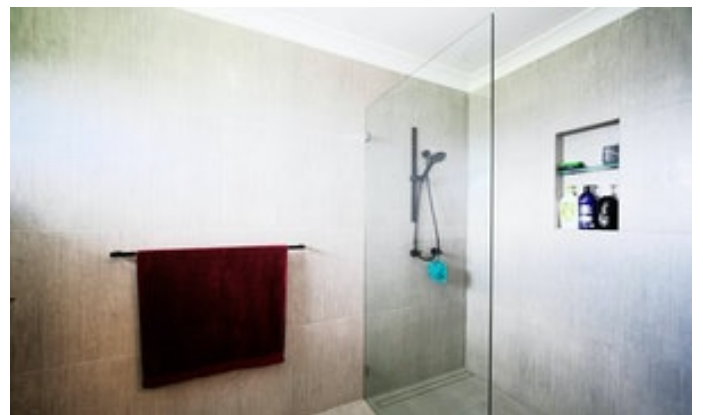
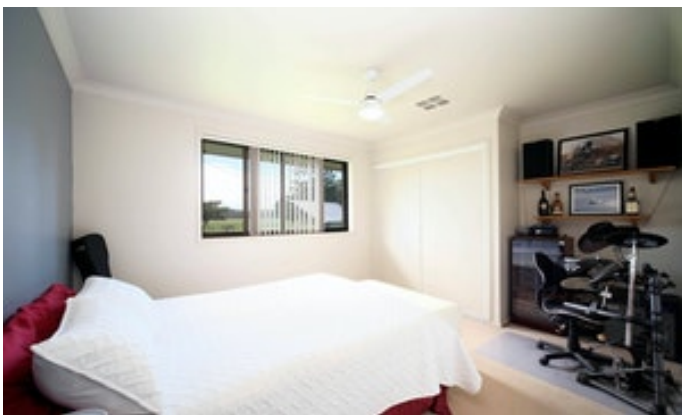
Alternatively, a young family looking for some space to spread their wings and still have the convenience of schooling and village life just around the corner will love the location and style of this property. To say that properties of this nature are scarce is an understatement. Move quickly and arrange for your inspection today.

- Land Area 4,967.00 square metres
- Bedrooms: 3
- Bathrooms: 2

## HOMESTEAD

<b>Bedrooms</b>	<b>3</b>
<b>Bathrooms</b>	<b>2</b>









Estimated areas  
GLA FLOOR 1: 138 sq. m, excluded 86 sq. m  
Total GLA 138 sq. m, total scanned area 224 sq. m

SIZES AND DIMENSIONS ARE APPROXIMATE, ACTUAL MAY VARY