

16 Riverlinks Court, TAREE, NSW 2430

A Modern Masterpiece in One of Taree's Most Sought-After Neighbourhoods

Completed in 2017 by a respected local builder, this stunning split-level residence delivers the perfect balance of modern design, family comfort, and sweeping rural vistas. With elevated views across farmland and the golf course, every angle of this home is designed to impress.

Step Inside and Discover:

- Four spacious bedrooms, including a master suite with walk-in robe and ensuite featuring a double shower
- Three stylish bathrooms with quality finishes
- High ceilings and an open-plan lounge and dining area with reverse-cycle air conditioning and large, beautiful floor tiles
- A designer kitchen boasting 25mm stone benchtops, gas cooktop, and walk-in pantry
- Downstairs retreat with two bedrooms and its own bathroom (all with built-ins and ceiling fans), a dedicated media room, office space, and private rear deck

TYPE: For Sale

INTERNET ID: 93P2268

SALE DETAILS

PRICE GUIDE
\$899,000

CONTACT DETAILS

Joshua Staines
0422 948 779

Step Outside and Enjoy:

- Outdoor alfresco dining area with aluminium shutters â## perfect for year-round entertaining
- Double garage with internal access plus side yard entry for a caravan, boat, or trailer
- Terraced backyard offering a peaceful sanctuary to relax, read a book, or enjoy your morning coffee
- Energy efficiency with solar panels, water tank, and gas hot water to reduce living costs
- Clever under-home storage for tools and machinery, with an external workshop area
- Beautifully landscaped, low-maintenance gardens with mature fruit trees

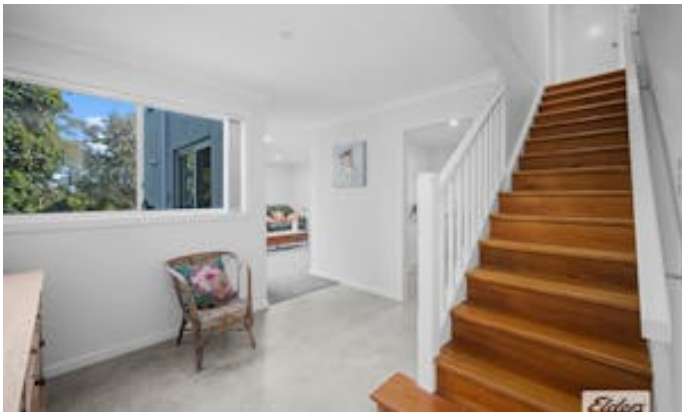
All of this in a premium location, within walking distance of quality schools, Manning Base Hospital, RSL & Golf Club, transport, and sporting facilities.

Homes of this calibre in such a tightly held neighbourhood are rarely offered. Act quickly â## call Joshua Staines today on 0422 948 779 to arrange your private inspection.

Other features: Area Views, Close to Schools, Close to Shops, Close to Transport, Roller Door Access

- Land Area 938.00 square metres
- Bedrooms: 4
- Bathrooms: 3
- Car Parks: 1
- Single garage











This plan is for illustrative purposes only and should only be used as such by any prospective purchaser.