

21 Lochinvar Road, WHERROL FLAT, NSW 2429

GOOD CLEAN COUNTRY LIVING WITH CONVENIENCE TO TOWN

Discover the perfect blend of lifestyle, comfort, and usability on this beautifully maintained 30 acre property in the ever popular Wherrol Flat area.

Gently sloping to level country ensures the land is as practical as it is picturesque and is ideal for horses, cattle, mixed livestock, or even a future market garden along the crystal clear intermittent creek line.

With easy all weather access, two reliable dams, and well-kept pasture, this property is ready to support all your rural pursuits.

The warm and stylish country home presents beautifully and is move in ready, offering:

A stunning contemporary country kitchen with dishwasher, double sink, 900mm oven/stovetop, and exceptional storage options. Caesar stone bench tops and quality fixtures.

Light filled lounge room with split system air conditioning, plantation shutters, and fresh timber-look flooring.

The particulars contained herein are supplied for information only and shall not be taken as a representation in any respect on the part of the vendor or its agent. Interested parties should contact the nominated person or office for full and current details.

TYPE: For Sale

INTERNET ID: 93P2329

SALE DETAILS

Price Guide \$975,000

CONTACT DETAILS

Troy Loretan
0400 530 269

All bedrooms are complete with built-in robes, ceiling fans, and serene views across the paddocks.

Practical three way main bathroom and updated laundry tiling.

A huge fully covered outdoor living area, perfect for year-round entertaining or relaxed family living.

Work, Create, or Host with Ease

A separate open room cabin provides the ideal space for a work from home setup, hobby room, or extra visitor accommodation.

Excellent Shedding & Infrastructure

A quality three-bay steel shed with workshop area sits in conjunction with additional secure lock-up storage that's just perfect for machinery, tools, and all the toys.

A handy shade house is just waiting for you to plant your next crop of greens.

A Lifestyle Location on the Rise

Wherrol Flat has become a sought after rural pocket, attracting families and lifestyle seekers wanting genuine country living with convenience. Wingham and Taree are both easily accessible for shopping, schooling, sports, and services.

All this, while being less than four hours from Sydney's northern suburbs and under an hour from a choice of beautiful surf beaches.

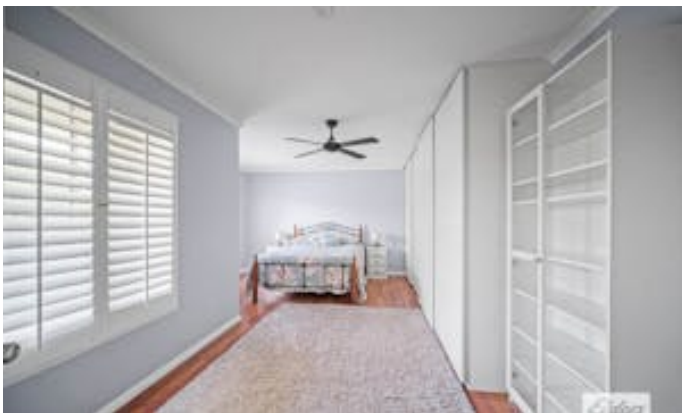
Whether you're raising a family, planning a peaceful retirement, or chasing space and freedom, this versatile 30 acre property offers something for everyone.

Don't miss this opportunity! For further details or to arrange your inspection, please call Troy Loretan on 0400 530 269 today.

Properties of this calibre are in strong demand, we encourage you to inspect sooner rather than later!

Other features: Area Views, Bush Retreat, Car Parking - Surface, Exhaust, Openable Windows, Toilet Facilities

- Land Area 30 acres
- Bedrooms: 3
- Bathrooms: 1
- 3 car garage
- Double carport











This plan is for illustrative purposes only and should only be used as such by any prospective purchaser.