



6 Coulston Street, TAREE, NSW 2430

CAPTIVATING VIEWS! LET'S TAKE A CLOSER LOOK.....

Nestled in the heart of Taree West, 6 Coulston Street offers a remarkable opportunity for large and extended families, first home buyers, and savvy investors alike. This spacious mid-century residence proudly sits high on a flood free generous and private 1395sqm block providing an exceptional opportunity to feel close to nature with sounds the beautiful songbirds bring to the property

The home's interior exudes classic charm with hardwood timber floors and lofty ceilings adorning the light filled main lounge area with wood fireplace. The ground level boasts three well-appointed bedrooms, including a master with built-in wardrobes, ensuring ample accommodation. A generous sized downstairs bathroom with bathtub, toilet, and vanity. Country style eat-in kitchen and dining area provide the perfect space for family meals, while the adjacent laundry room includes a convenient shower facility.

Venture upstairs to discover two additional bedrooms and a cosy lounge/living area complete with a kitchenette. The original bathroom, featuring a bath, vanity, and toilet, caters to the upper level, which also enjoys access to a deck. This property offers breathtaking views of the Manning River and surrounding hinterland from several different rooms of the home.

TYPE: For Sale

INTERNET ID: 93P2345

SALE DETAILS

OFFERS INVITED

CONTACT DETAILS

,
Shane Merrick
0408 621 962

Outside, the property benefits from established gardens with a few fruit trees, a storage shed and off-street parking for vehicles. Its prime location is just a short distance from Taree West Primary School, local shops, clubs, and the vibrant Taree city centre.

Whether looking to create a dream home or seeking a promising investment, this property offers boundless potential amidst the serene setting.

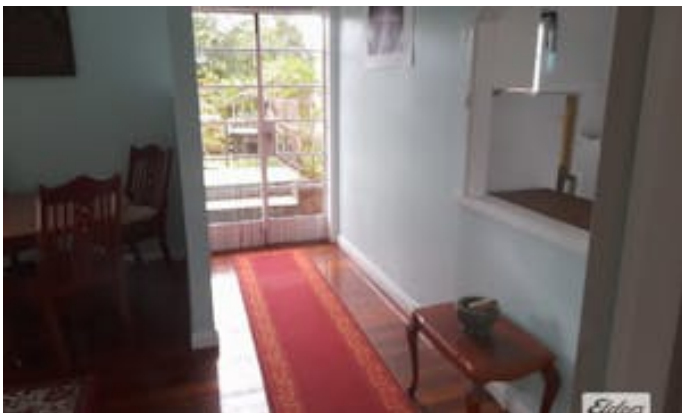
To organise a private inspection please call Shane Merrick, Elders Real Estate, Taree M:0408 62 1962

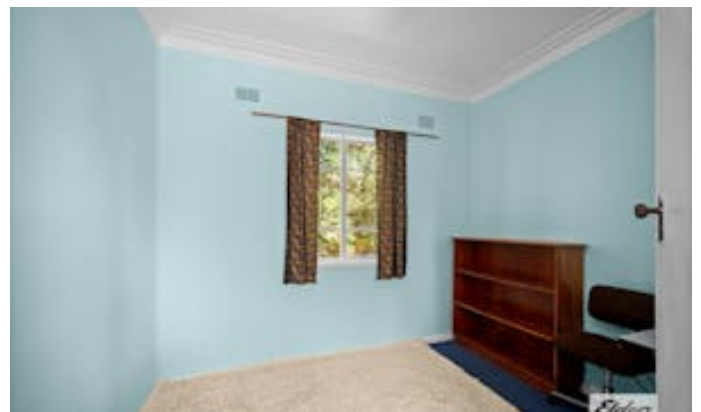
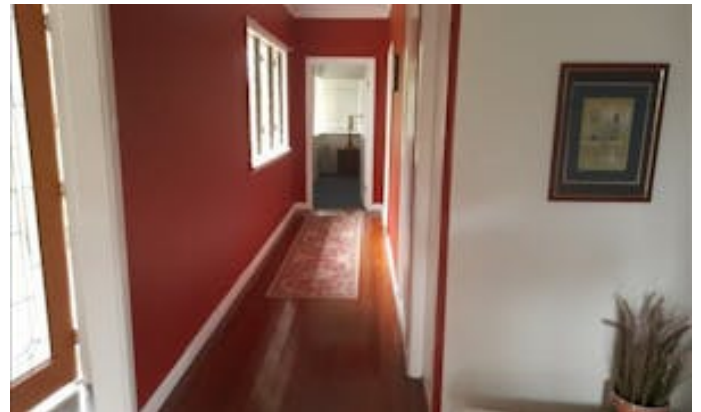
Inspections by Appointment Only

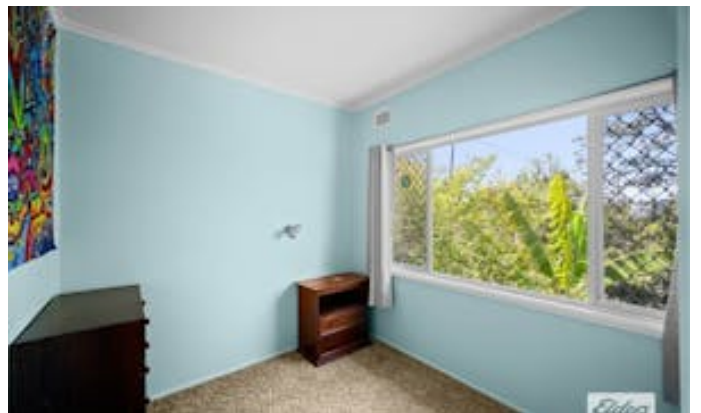
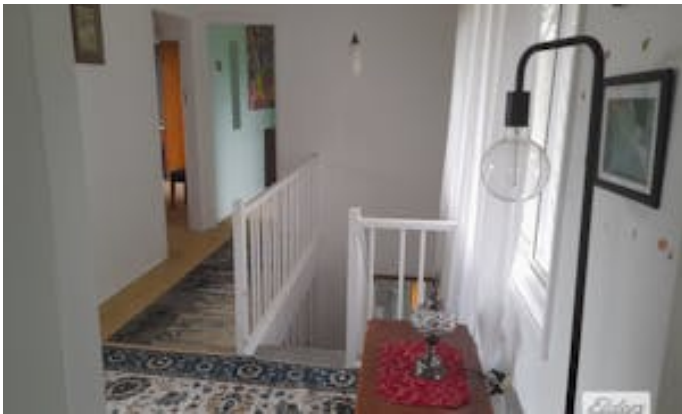
*Information contained on any marketing material, website or other portal should not be relied upon. You should make your own enquiries and seek your own independent advice with respect to any property advertised or the information about the property.

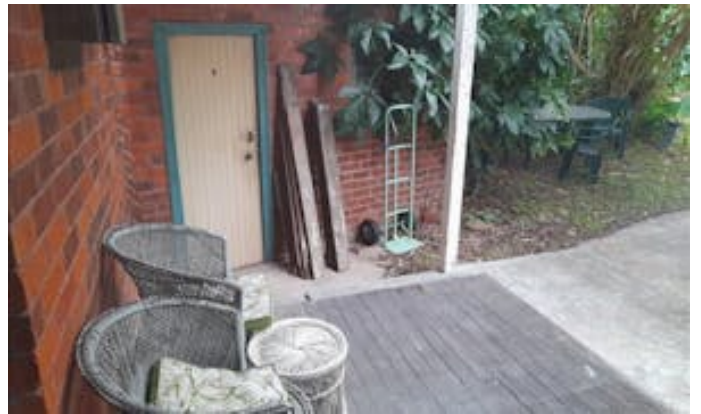
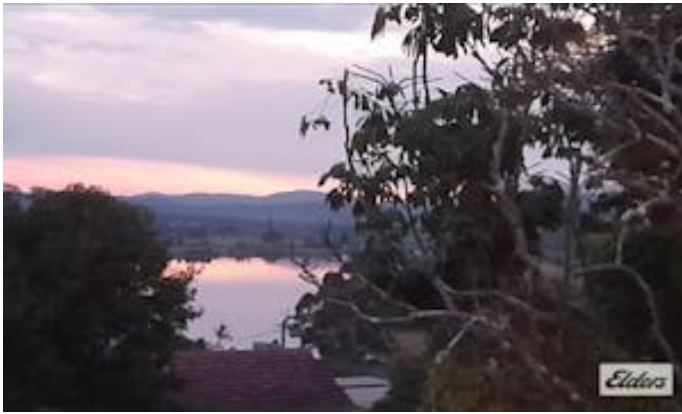
Other features: Area Views, Car Parking - Surface, Carpeted, Close to Schools, Close to Shops, Close to Transport

- Land Area 1,395.00 square metre
- Bedrooms: 5
- Bathrooms: 2
- Car Parks: 2
- Floorboards









Elders



This plan is for illustrative purposes only and should only be used as such by any prospective purchaser.