



32 Cain Street, EVERTON PARK, QLD 4053

WE ARE ONLY LIMITED BY OUR IMAGINATION... AND THE WILL TO RENOVATE!

...talk to Di about this grand old home with two sweeping brick patios and two large fireplaces plus - a huge workshop with mezzanine storage! Nestled in a peaceful corner of our amazing suburb - high plaster ceilings with intricate plaster cornices will delight. All rooms in the home are large with built-in wardrobes to the main bedroom. The original kitchen and bathroom take you on a trip down memory lane with timber cabinetry and beautifully preserved mosaic tiles that could form the base for a makeover preserving the iconic 1950's feel. Part of the home has hardwood timber floors that will polish up a treat - protected for years by carpet, whilst the remainder is built on a concrete slab. Wide cool hallways create breezy cross ventilation and heighten the sense of light filled space throughout. The adjoining shed is as big as a house in itself - the opportunities here are boundless but the rewards will be many - what will you do here?

This location is second to none - walking distance to the party atmosphere of Everton Parklane Dining Precinct, Everton Park State High School, bus stop, easy access to Northside Christian College, North West Private Hospital and Specialist Centre. You are 5 minutes away from your choice of supermarkets and all beauty/professional services, under 10 km to Brisbane City and Westfield Chermside. Everton Park is central to a wide range of quality state and private schools within a 10 minute drive. This family friendly neighbourhood is the place to be - the Capital Growth is fantastic and you will become part of a welcoming community and watch your family thrive and

The particulars contained herein are supplied for information only and shall not be taken as a representation in any respect on the part of the vendor or its agent. Interested parties should contact the nominated person or office for full and current details.

TYPE: Sold

INTERNET ID: 95P2830

SALE DETAILS

Offers Over \$845,000

CONTACT DETAILS

Elders Real Estate Everton Park

537 South Pine Road
Everton Park, QLD
07 3355 7854

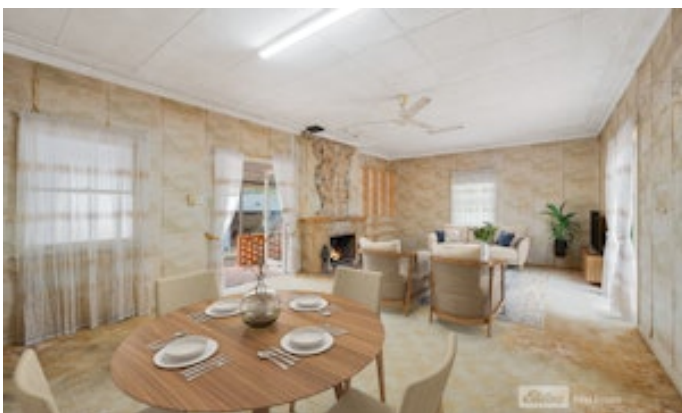
Di Webb

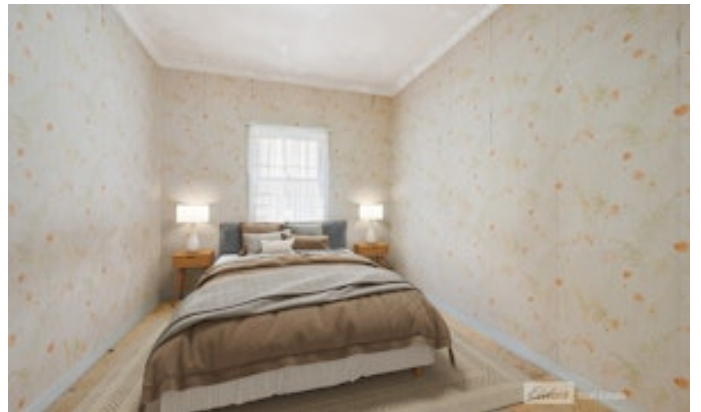
0413 263 636

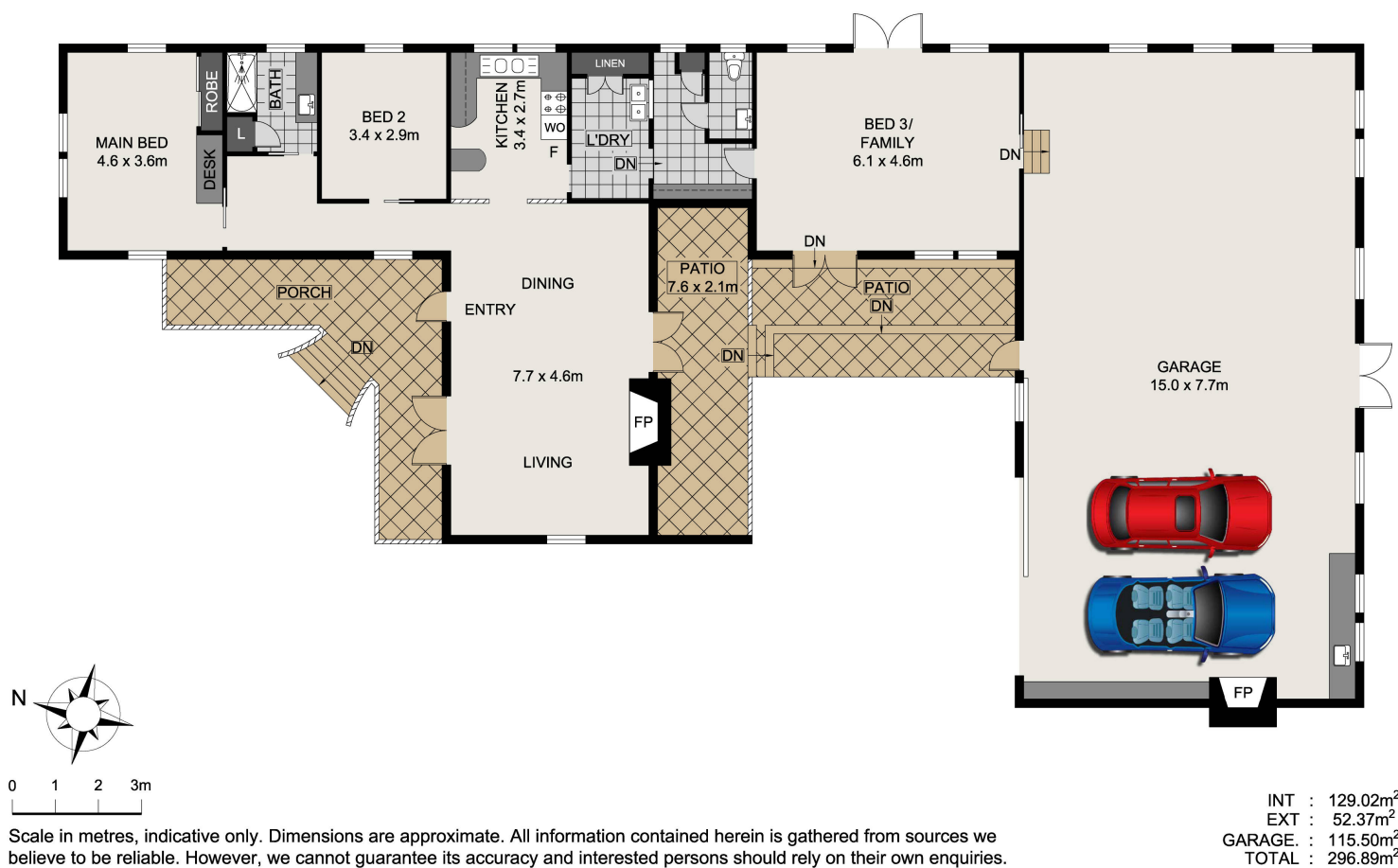
flourish!

...talk to Di about these amazing features

- 8 car workshop/garage!
 - Mezzanine storage
 - Two large brick patios
 - Two big brick fireplaces
 - High plaster ceilings
 - Ornate ceiling cornices
 - Wide hallways
 - Hardwood floors/part concrete slab
 - Huge rooms throughout
 - Built in wardrobe
 - Town gas
 - Terracotta roof
 - Walk to every luxury and necessity
 - Incredible opportunity with limitless potential!
- Land Area 723.00 square metres
 - Bedrooms: 3
 - Bathrooms: 1
 - 8 car garage







32 Cain Street, Everton Park