



5 Dargie Street, EVERTON PARK, QLD 4053

FIRST VIEWING: Saturday 28th February Stylish and Spacious Close to All Lifestyle Amenities

...talk to Di about this sensational high-set brick home located in one of this thriving suburb's best streets. Spacious and freshly painted throughout, modern LED lighting sparkles with a gleam in the beautiful polished hardwood timber floors. The large open plan living zones are further extended by a sunroom at the front and the back through french doors to a north easterly facing balcony - a perfectly sunny spot for a morning coffee or peaceful and shady for a cool afternoon drink. The kitchen is huge and showcases smooth, wide stone bench tops and breakfast bar, loads of glossy white cupboards and drawers, a big pantry and the essential dishwasher. The modern bathroom offers gleaming tapware, a generous size vanity cabinet and a luxuriously deep bath with the added convenience of a laundry chute and separate toilet. The main bedroom is huge with the bathroom providing comfortable separation from the three remaining spacious bedrooms. Internal timber stairs lead to the lower level where there is a room built in with plasterboard walls and a vast space waiting for the new homeowner to apply their own touch of magic to create what best suits their lifestyle. The fenced back yard is huge and a shady patio is perfectly positioned to overlook your garden haven from a busy world and next Christmas's game of cricket. You will appreciate internal access to the large double garage with room for off street parking of an additional three vehicles.

This location is brilliant, situated in the highly regarded Trout's Estate - walking distance to the party atmosphere of the Park Lane Dining Precinct, Everton Park State School, bus stop, Northside Christian College, North West Private Hospital and Specialist

TYPE: For Sale

INTERNET ID: 95P2921

SALE DETAILS

FOR SALE

CONTACT DETAILS

Elders Real Estate Everton Park

537 South Pine Road
Everton Park, QLD
07 3355 7854

Di Webb

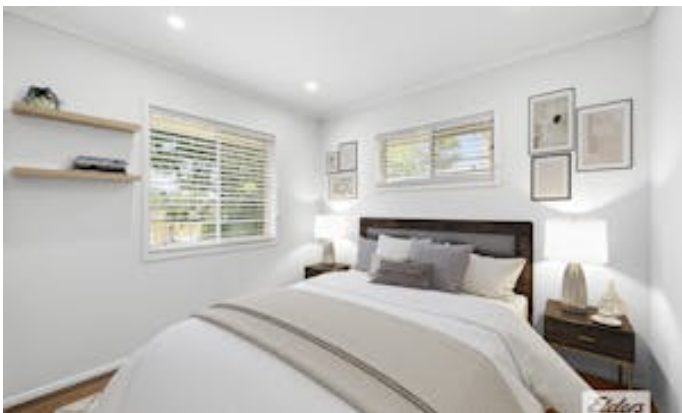
0413 263 636

Centre. You are 5 minutes away from your choice of supermarkets and all beauty/professional services, under 10 km to Brisbane City and Westfield Shopping Centre at Chermside. Everton Park is central to a wide range of quality state and private schools within a 10-minute drive. Easy access to the Airport Tunnel Link and Clem 7 taking you quickly to anywhere in Brisbane. This highly sought after suburb is the place to be - the Capital Growth is fantastic and you will become part of a friendly community and watch your family thrive and flourish!

...talk to Di about these fabulous features

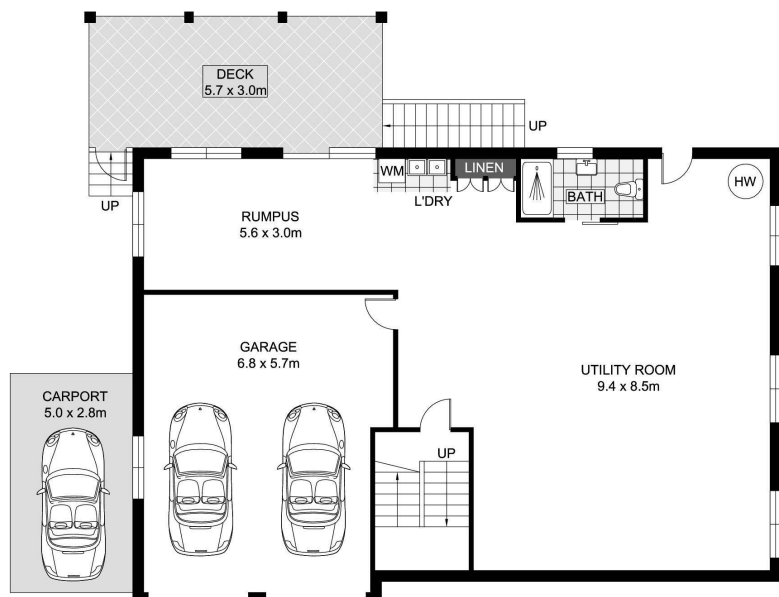
- Large high set brick home
- Freshly painted throughout
- Polished hardwood timber floors
- Spacious living areas
- Front sunroom
- Back sunroom with balcony
- LED lighting
- Modern kitchen
- Glossy white cabinetry
- Stone bench tops
- Breakfast bar
- Double door pantry
- Dishwasher
- Plenty of bench and storage space
- Modern bathroom
- Gleaming tapware
- Luxuriously deep bath
- Laundry chute
- Separate toilet
- Air-conditioned main bedroom
- Internal stairs
- Lower level
- Second bathroom
- Internal access double garage
- Plaster board sheeted room
- Patio
- Vast internal space ready to be put to the best use for you!
- Mirror door built in wardrobes

- Crimsafe style security
- Terracotta tile roof
- Underground power and cabling
- Big fenced back yard - New Sir Walter Lawn
- Garden shed
- Side access
- Additional off-street parking for three cars
- Surrounded by other quality homes
- Walk to all life's essentials and luxuries!
 - Land Area 607.00 square metres
 - Bedrooms: 4
 - Bathrooms: 2
 - Car Parks: 3
 - Double garage

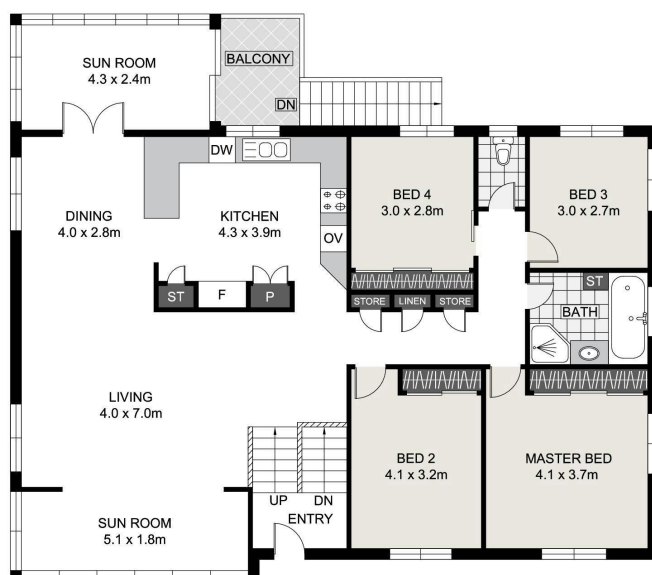








LOWER LEVEL



UPPER LEVEL

0 1 2 3m

Produced by Anki & Co for illustrative purposes only. Scale in metres, indicative only.
Dimensions are approximate. Anki & Co cannot guarantee its accuracy and interested persons should rely on their own enquiries.



INT : 246.93m²
EXT : 30.86m²
GARAGE : 36.78m²
CARPORT : 14.00m²
TOTAL : 328.57m²

5 Dargie Street, Everton Park