

23 Drake Street, EVERTON PARK, QLD 4053

SENSATIONAL CITY VIEWS! FANTASTIC CUL-DE-SAC LOCATION!

â#t talk to Di about stunning city views from the front deck and large living room of this charming Queenslander style home. Sitting proudly above the road allowing for highset entry stairs at the front whilst enjoying lowset living at the back, where the covered patio overlooks the private back garden.

The modern kitchen offers all the pleasures of stone bench tops, island bench/ breakfast bar, gas cooktop and dishwasher. Enjoy entertaining with the adjacent dining space flowing through a timber french door onto the private patio.

The well-appointed main bedroom has a walk-in robe and a modern ensuite, complete with a mirrored medicine cabinet and a rain fall shower. The well-located main bath room includes a full-size bath, separate shower recess and separate toilet. Under-house is plenty of lockup storage, parking for a single vehicle plus an additional multipurpose room.

This location is second to none - surrounded by other quality homes in a peaceful street. Walking distance to the party atmosphere of Everton Parklane Dining Precinct, Teralba Parklands, Everton Park State School, bus stop with easy access to Northside Christian College and North West Private Hospital and Specialist Centre. You are 5

The particulars contained herein are supplied for information only and shall not be taken as a representation in any respect on the part of the vendor or its agent. Interested parties should contact the nominated person or office for full and current details.

TYPE: For Sale

INTERNET ID: 95P2926

SALE DETAILS

FOR SALE

CONTACT DETAILS

Elders Real Estate Everton Park

537 South Pine Road

Everton Park, QLD

07 3355 7854

Di Webb

0413 263 636

minutes away from your choice of supermarkets and all beauty/professional services, under 10 km to Brisbane City and Westfield Shopping Centre at Chermside. Everton Park is central to a wide range of quality state and private schools within a 10-minute drive. The Airport Tunnel Link and Clem 7 tunnel takes you quickly to anywhere in Brisbane. Everton Park is the place to be - the Capital Growth is fantastic and you will become part of a family friendly community!

â#italk to Di about these fantastic features

Sparkling city views

Front deck

Back Patio

Modern kitchen

Stone benchtops

Gas cooktop

Dish washer

Island bench

Modern ensuite

Mirrored medicine cabinet

Rain fall shower

Walk in robe

Full size bath to main bathroom

Separate shower recess

Separate toilet

Built in wardrobe

Air-condition

Ceiling fans

Timber floors

Above the street elevation

High set at front

Low set at the back

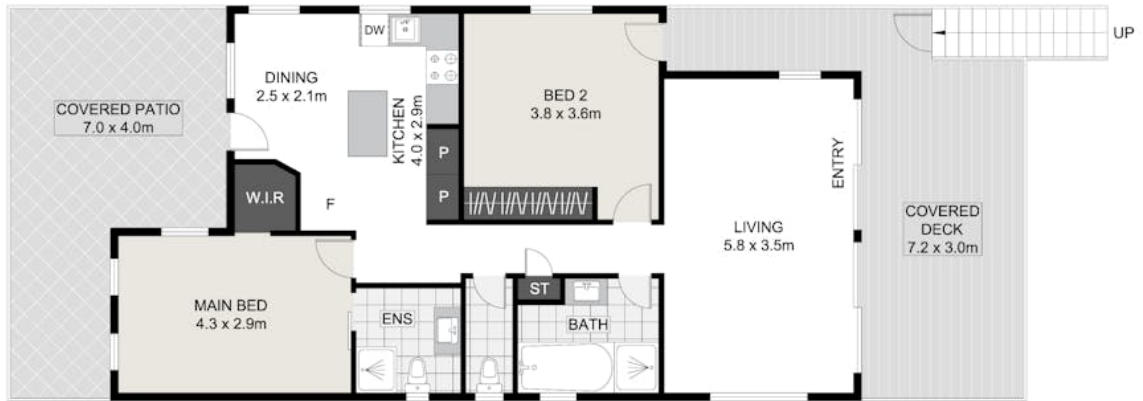
Under house lockable storage space/ multi-purpose room

Peaceful cul-de-sac

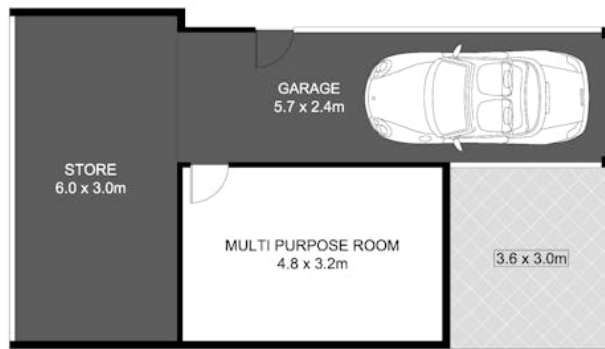
Walk to everything!

- Land Area 405.00 square metres
- Bedrooms: 2
- Bathrooms: 2
- Car Parks: 1
- Single garage





UPPER LEVEL



LOWER LEVEL

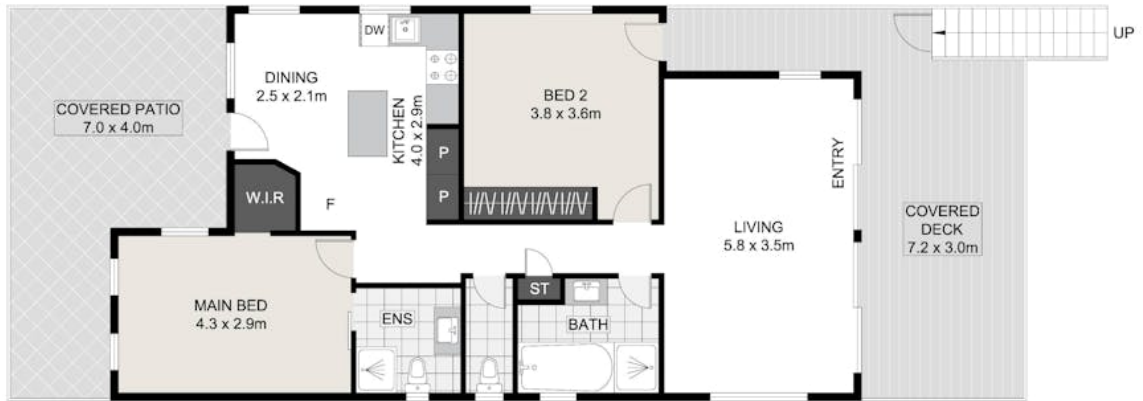


Produced by Anki & Co for illustrative purposes only. Scale in metres, indicative only. Dimensions are approximate. Anki & Co cannot guarantee its accuracy and interested persons should rely on their own enquiries.

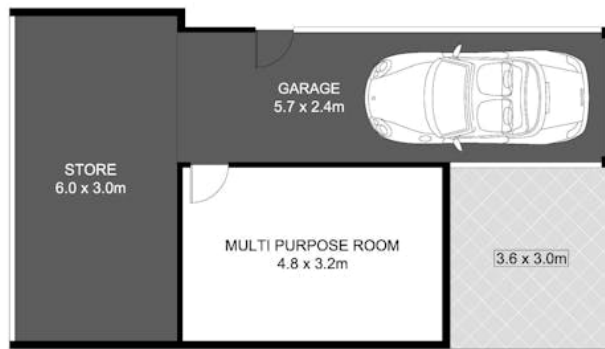


INT	: 97.41m ²
EXT	: 57.90m ²
CARPORT/STORE	: 36.84m ²
TOTAL	: 192.15m ²

23 Drake Street, Everton Park



UPPER LEVEL



LOWER LEVEL



Produced by Anki & Co for illustrative purposes only. Scale in metres, indicative only. Dimensions are approximate. Anki & Co cannot guarantee its accuracy and interested persons should rely on their own enquiries.



INT	: 97.41m ²
EXT	: 57.90m ²
CARPORT/STORE	: 36.84m ²
TOTAL	: 192.15m²

23 Drake Street, Everton Park