



## 30/31 Woolworths Street, EVERTON PARK, QLD 4053

### RESORT STYLE LIVING ALL YEAR AROUND

...talk to Di about this spacious and elegant terrace home located in the high energy heart of Everton Park, where restaurant choices and professional services abound.

This near new, contemporary home is your whisper quiet haven from the bustle of the busy world. Located in the exclusive "Fable" complex, offering a resort style pool and with dining pavilion, yoga lawns, fire pit, pizza oven and BBQ's all surrounded by lush greenery. The complex has been built with one stop living in mind and is located under 7 km to Brisbane CBD. The interior finishes are a testament to fine modern decor. Oak (engineered) flooring throughout the open plan living areas creates a beautiful blending of indoor and outdoor living, whilst high ceilings and strategically located windows maximize natural light and airflow while maintaining privacy.

The courtyard on the ground floor is a sheltered place to relax and is accessed by sliding glass doors from the laundry room/multi-purpose area which includes plenty of storage cupboards and bench space. Considering how well connected this location is, one may not even need a vehicle, which would free up the adjoining garage as another living area.

A set of internal stairs, beautifully finished in Oak (engineered flooring), leads to the

The particulars contained herein are supplied for information only and shall not be taken as a representation in any respect on the part of the vendor or its agent. Interested parties should contact the nominated person or office for full and current details.

**TYPE:** For Sale

**INTERNET ID:** 95P2934

**SALE DETAILS**

**Offers From \$1,250,000**

**CONTACT DETAILS**

**Elders Real Estate Everton Park**

537 South Pine Road  
Everton Park, QLD  
07 3355 7854

**Di Webb**

0413 263 636

second floor and the under-roof deck beyond. The kitchen is an absolute delight of gleaming stone countertops that reflect the sparkle of stylish lighting and quality Smeg appliances including dishwasher and induction hot plates. The colour palette is a soothing blend of soft whites with a statement breakfast bar showcasing the fluted cabinetry of a centre island. This home has ducted air conditioning throughout, creating comfortable climate control all year around. A generous size study/fourth bedroom is perfect for working from home or as a central spot for study while maintaining connection to family life. A large powder room is also conveniently located on this floor

Lushly carpeted stairs and top floor provide a level of luxury and hush to this peaceful rest zone. The large ensuite and main bathroom feature wide shower recesses with rainfall shower heads, stone top vanities with storage below, and mirrored medicine cabinets elevating your morning ritual to a luxurious, spa-like experience.

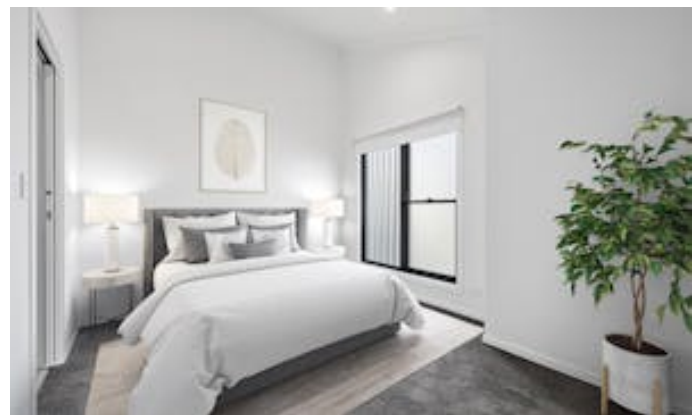
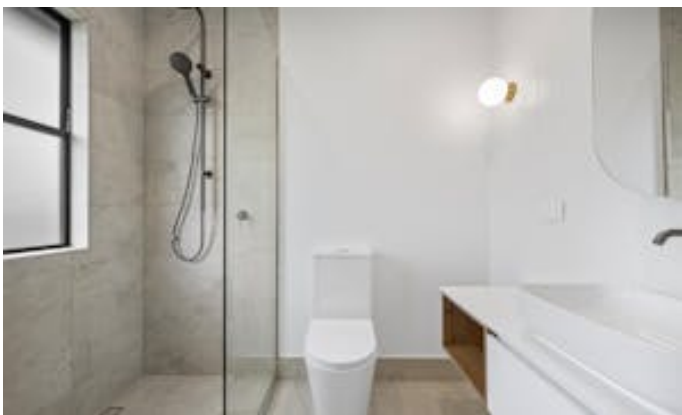
This location is sensational! Walking distance to the vibrant Everton Parklane Dining Precinct, Woolworths and surrounding cafes and bus stop. Easy access to Northside Christian College, North West Private Hospital/Specialist Centre. Surrounded your choice of supermarkets and all beauty/professional services, under 10 km to Brisbane City and Westfield Shopping Centre at Chermside. Everton Park is central to a wide range of quality state and private schools within a 10-minute drive. The Airport Tunnel Link and Clem 7 tunnel takes you quickly to anywhere in Brisbane. Everton Park is the place to be - the Capital Growth is fantastic and you will become part of a family friendly community!

...talk to Di about these fabulous features

- Elevated and private
- Only one adjoining neighbour
- Ground level courtyard
- North east aspect
- Second level deck
- Large study/fourth bedroom
- Ducted air-conditioning
- Spacious open plan living
- Oak (engineered) flooring
- Stone bench tops/breakfast bar
- Smeg appliances
- Dishwasher
- Induction hot plates
- Plenty of storage cupboards/drawers
- Fluted cabinetry
- High ceilings
- Raked ceilings
- Powder room on second floor
- Ensuite /Main bathroom

- Stone bench tops
- Oval mirrored medicine cabinet
- Statement tapware
- Wide shower recess
- Rain fall showers
- Above counter basins
- Shower niche storage
- Large laundry zone with storage cupboards
- Study nook in second bedroom
- Quality carpeting top floor
- Built in wardrobes with shelving
- Storage cupboard under stairs
- Mirror doors
- Remote control garage
- Sensational Pool/Dining pavilion
- Tropical garden sanctuary
- Resident-exclusive BBQ area, pizza oven & fire pit
- EV charging station in Visitor Parking
- Walk to life's necessities and luxuries!
  - Building Area: 193.00 square metres
  - Bedrooms: 3
  - Bathrooms: 2
  - Double garage











0 1 2 3m

Produced by Anki & Co for illustrative purposes only. Scale in metres, indicative only. Dimensions are approximate. Anki & Co cannot guarantee its accuracy and interested persons should rely on their own enquiries.

### 30/31 Woolworths Street, Everton Park