

30 Milne Street, LAIDLEY SOUTH, QLD 4341

My Home in the Country - 2acres

Prepare to fall in love with this character-filled gabled Queenslander home.

Perfectly positioned on an elevated block to capture sweeping views across surrounding paddocks & beyond. A peaceful country retreat, this property offers the best of both worlds-serene rural living with the convenience of town amenities nearby.

The home is thoughtfully designed for comfortable family living. It features a spacious lounge with air conditioning, a separate dining area, & three generous bedrooms-two with built-in wardrobes & all with ceiling fans.

The standout feature is the inviting deck-an ideal spot to unwind, soak in the panoramic views & breathe in the fresh country air. Several fenced paddocks currently housing mini goats & Alpaca, chicken coop too as well as a dam on the property-perfect for those dreaming of a hobby farm lifestyle.

Property Features:

- 80,000L tank water capacity
- 10kW solar system
- 6x4m carport

The particulars contained herein are supplied for information only and shall not be taken as a representation in any respect on the part of the vendor or its agent. Interested parties should contact the nominated person or office for full and current details.

TYPE: For Sale

INTERNET ID: 97P1717

SALE DETAILS

\$800,000

CONTACT DETAILS

Elders Real Estate - Laidley

101 Patrick Street
Laidley, QLD
07 5465 1800

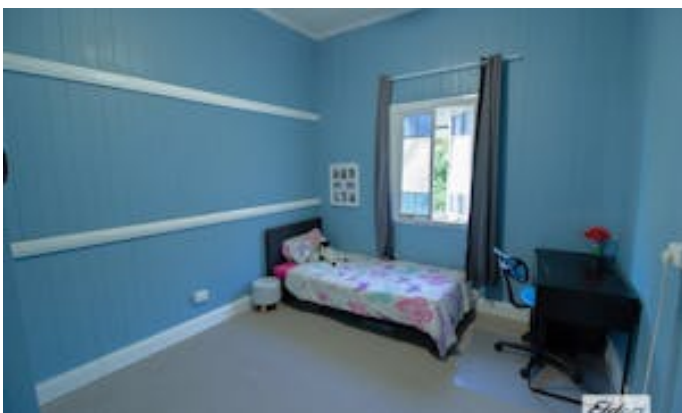
Dannina Penson
0401 076 220

- 7x14m powered shed (Laundry with second toilet)
- School bus stops nearby

Whether you're looking to downsize to a peaceful haven, raise a family in the countryside, or enjoy the freedom of a hobby farm, this home has everything you need. 3 mins Drive into Laidley town centre, schools, child care, hospital & public transport to Rosewood train. 1 hour easy highway commute to Brisbane.

Disclaimer: While every effort has been made to ensure the accuracy of the information in this property overview, it has not been independently verified. Neither the vendor nor the agent makes any warranty as to its accuracy. Prospective purchasers are advised to conduct their own enquiries and rely on their own judgment.

- Land Area 2.12 acres
- Bedrooms: 3
- Bathrooms: 1
- Car Parks: 3









FLOOR PLAN

This floor plan including furniture, fixture measurements and dimensions are approximate and for illustrative purposes only.
BoxBrownie.com gives no guarantee, warranty or representation as to the accuracy and layout.
All enquiries must be directed to the agent, vendor or party representing this floor plan.

30 Mine Street, Laidley South