

16 Jamieson Road, CHURCHABLE, QLD 4311

Race-Ready & Lifestyle Perfect: Premier Greyhound Facility on 40 Acres

This is your chance to secure a well-maintained, fully equipped greyhound facility in the heart of Churchable - a region renowned for dog kennels and greyhound training. Ideally located approx 45 minutes from The Q " The new home of QLD Greyhound Racing"(Video attached) This property combines both lifestyle and business, ready for immediate operation.

Set on a selectively cleared 40-acre flood free block, the new purpose built facilities only built 12 months ago are extensive.

No expense has been spared on the kennel blocks with epoxy floors and acoustic ceilings throughout, pet panel kennels designed to high specs and standards giving you a larger kennel space.

Features include:

Current dog license allows for 85 dogs.

71 kennels across two large kennel blocks

TYPE: For Sale

INTERNET ID: 97P1823

SALE DETAILS

Expressions of Interest

CONTACT DETAILS

Elders Real Estate - Laidley

101 Patrick Street
Laidley, QLD
07 5465 1800

Darryl Muckert
0407 692 600

34 outside kennels with custom shade sails located between both kennel blocks

8 X 85m x 85m rearing yards with 1.6 m fencing.

8 X 100 mm cool panel kennels located within rearing paddocks.

6 X 100 m sprint lanes on sand that feature directly of the back of the kennels

520m straight track located at the rear of the kennel blocks.

Equipped Bull ring

All rearing paddocks and sprint lanes are irrigated

Spring fed dam

Ample space is available for future expansion, whether for additional kennel blocks or other infrastructure

The spacious homestead features a total of four bedrooms, two of which include walk-in robes and private ensuites, while the main bathroom boasts a spa bath. At its heart is the open-plan kitchen, dining, and lounge area, perfect for relaxed family living. In a separate wing of the house, there is a second living area, office/fourth bedroom, one of the main bedrooms with ensuite plus WIR.

Other features of the home include:

High ceilings

Polished timber floors in kitchen and dining areas

Carpeted living spaces and bedrooms

Reverse-cycle air conditioning throughout

Entertain family and friends on the large hardwood wraparound deck overlooking the sparkling in-ground concrete pool. A 12m x 6m powered shed with an awning completes the house yard.

Currently, the property is leased to an exceptional greyhound trainer until March 2026.

This property presents an outstanding opportunity for a wide range of buyers:

Investors seeking a well-set-up property with minimal maintenance

Established trainers looking to expand operations

Entrepreneurs exploring potential to convert the site into boarding kennels or alternative uses

With excellent infrastructure, ample space, and a prime location, this property offers flexibility, growth, and long-term potential - all in one impressive package.

Expressions of interest closes on Tuesday 18th of November 2025 at 3pm , if not sold prior.

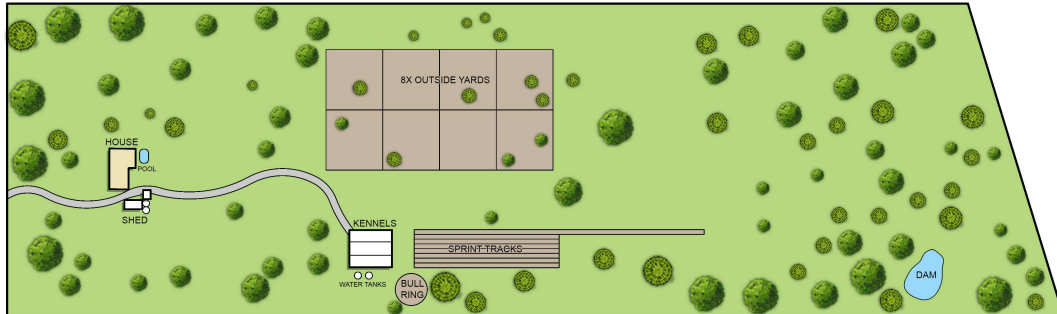
Disclaimer: While every effort has been made to ensure the accuracy of the information in this property overview, it has not been independently verified. Neither the vendor nor the agent makes any warranty as to its accuracy. Prospective purchasers are advised to conduct their own enquiries and rely on their own judgment.

- Land Area 16.08 hectares
- Bedrooms: 4
- Bathrooms: 3
- Double garage
- Double carport
- Ensuite

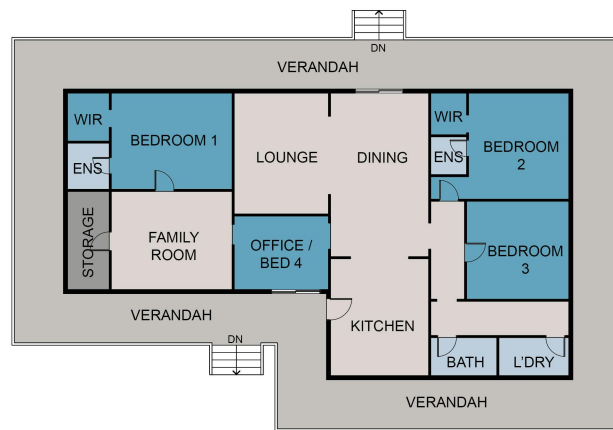








SITE PLAN



FLOOR PLAN

This floor plan including furniture, fixture measurements and dimensions are approximate and for illustrative purposes only. BoxBrownie.com gives no guarantee, warranty or representation as to the accuracy and layout. All enquiries must be directed to the agent, vendor or party representing this floor plan.

16 Jamieson Road, Churchable