



## 9 Brown Court, LAIDLEY HEIGHTS, QLD 4341

### Escape to Your Own Hidden Sanctuary

Tucked away in a quiet cul-de-sac on the edge of Laidley Heights, this private 6,000sqm fully fenced acreage retreat offers the perfect blend of space, tranquillity, and country charm. Set well back from the road and surrounded by an abundance of established trees, the property provides a secluded sanctuary where you can truly unwind and enjoy nature.

The grounds are a standout feature, with a huge variety of mature trees creating a picturesque backdrop and attracting an abundance of birdlife. A large greenhouse and an orchard with fruit trees scattered throughout the property provide endless opportunities for those who enjoy growing their own produce and embracing a self-sufficient lifestyle.

The home offers four generously sized bedrooms serviced by a family bathroom, while the spacious lounge room with new carpet flows through to the kitchen and dining area, creating a comfortable and practical layout for everyday living. A full-length front patio provides the perfect place to sit back, relax, and take in the peaceful outlook and private setting.

For those needing extra storage or workspace, the massive powered two-bay shed +

The particulars contained herein are supplied for information only and shall not be taken as a representation in any respect on the part of the vendor or its agent. Interested parties should contact the nominated person or office for full and current details.

**TYPE:** For Sale

**INTERNET ID:** 97P2092

**SALE DETAILS**

**Offers Over \$839,000**

**CONTACT DETAILS**

**Elders Real Estate - Laidley**

101 Patrick Street  
Laidley, QLD  
07 5465 1800

**Angela North**  
0427 578 393

workshop space, with an additional carport offers plenty of room for vehicles, machinery, and water toys to utilise the beautiful Lake Dyer close by.

Additional features include trickle-feed town water, 4 supplementary rainwater tanks, and security screens throughout for added peace of mind.

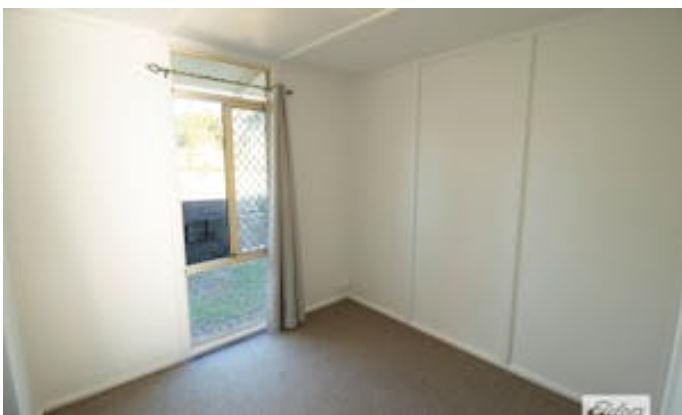
Spend your mornings with a coffee on the patio, your afternoons enjoying the space and privacy, and your evenings soaking up the peace and quiet that only acreage living can provide.

Conveniently located just 5 minutes from Laidley, 15 minutes from the Plainland shopping precinct and Warrego Highway, and approximately 45 minutes from both Ipswich and Toowoomba, this is a wonderful opportunity to embrace a relaxed acreage lifestyle without sacrificing convenience.

Other features: Carpeted

- Land Area 6,000.00 square metres
- Bedrooms: 4
- Bathrooms: 1
- Car Parks: 3









**FLOOR PLAN**

This floor plan including furniture, fixture measurements and dimensions are approximate and for illustrative purposes only.  
BoxBrownie.com gives no guarantee, warranty or representation as to the accuracy and layout.  
All enquiries must be directed to the agent, vendor or party representing this floor plan.

**9 Brown Court, Laidley Heights**