



## 90 Douglas McInnes Drive, LAIDLEY, QLD 4341

### Family Living with Space, Style & Media Room

Positioned on a 690sqm corner block within the highly sought-after McInnes Fields Estate in Laidley, this well-designed home offers low-maintenance living and is ideal for families seeking space, comfort, and convenience.

Thoughtfully planned with easy living in mind, the home delivers excellent value in a prime location. Featuring dual street access, no rear neighbours, and ample space for a shed or caravan, it provides flexibility that is hard to find.

At the heart of the home is a modern kitchen complete with a gas cooktop and dishwasher, overlooking the outdoor entertaining area and backyard. The adjoining family room and dining space flow seamlessly through glass sliding doors to the alfresco patio, creating an effortless indoor-outdoor lifestyle. A split system air-conditioner ensures year-round comfort. A separate media room offers a second living space and enjoys direct access to the outdoor alfresco patio, adding further versatility for family living and entertaining.

All 4 bedrooms are generously sized, freshly updated with new flooring, and include built-in wardrobes and ceiling fans. The master suite features a walk-in robe and private ensuite with double vanity for added comfort and convenience.

The particulars contained herein are supplied for information only and shall not be taken as a representation in any respect on the part of the vendor or its agent. Interested parties should contact the nominated person or office for full and current details.

**TYPE:** For Sale

**INTERNET ID:** 97P2111

**SALE DETAILS**

**Offers Over \$729,000**

**CONTACT DETAILS**

**Elders Real Estate - Laidley**

101 Patrick Street

Laidley, QLD

07 5465 1800

**Angela North**

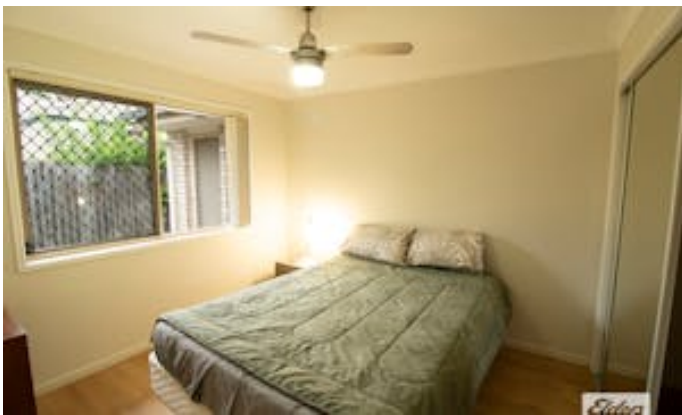
0427 578 393

Additional features include double garage accommodation and a water tank servicing the laundry and toilets, supporting sustainable living.

Perfectly located, the property is within a short walk to the local high school, bus routes to surrounding schools, and just moments from recreational grounds, caf  s, and local shops.

Other features: Close to Schools, Close to Shops, Close to Transport

- Land Area 690.00 square metres
- Bedrooms: 4
- Bathrooms: 2
- Car Parks: 2
- Ensuite





**Elders**

FLOOR PLAN

This floor plan including furniture, fixture measurements and dimensions are approximate and for illustrative purposes only. Boxbrownie.com gives no guarantee, warranty or representation as to the accuracy and layout. All enquiries must be directed to the agent, vendor or party representing this floor plan.

90 Douglas McInnes Drive, Laidley