



## 39 Range Crescent, LAIDLEY, QLD 4341

### Our Hide Away

Immerse yourself in secluded serenity hidden amongst the natural bushland. Sound like your ideal escape? Tucked away on 2.5 acres of peaceful natural bushland, this cosy brick home built in the 1990s offers privacy, comfort and endless potential. Inside, the home features an open plan living and separate dining with scope for study or 4th bedroom. The three bedrooms all have wardrobes and a practical two-way bathroom. The light-filled kitchen is equipped with electric cooking and offers a welcoming space for everyday meal preparation. Designed for low maintenance living, you can move straight in and simply enjoy the tranquil surrounds. Outside, the partly terraced section of the block presents exciting possibilities, with further works to create additional flat space for kids to play, entertaining areas or even a future shed.

The property is serviced by tank water only, mains power and a septic system (not fully fenced). A wonderful opportunity to add your own touches and create your ideal lifestyle retreat. Positioned up on Buhse Hill in Laidley, this friendly pocket appeals to all ages and offers the convenience of a school bus service nearby. Located just 6 minutes from Laidley town centre, approximately 1 hour to Brisbane and 45 minutes to Toowoomba.

- Land Area 2.5 acres
- Bedrooms: 3
- Bathrooms: 1
- Single carport

**TYPE:** For Sale

**INTERNET ID:** 97P2136

**SALE DETAILS**

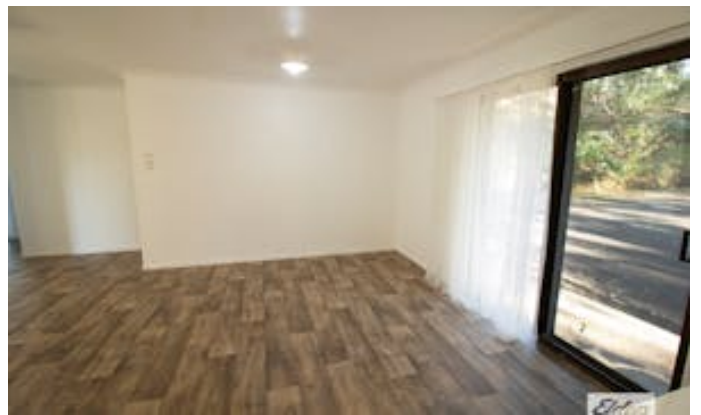
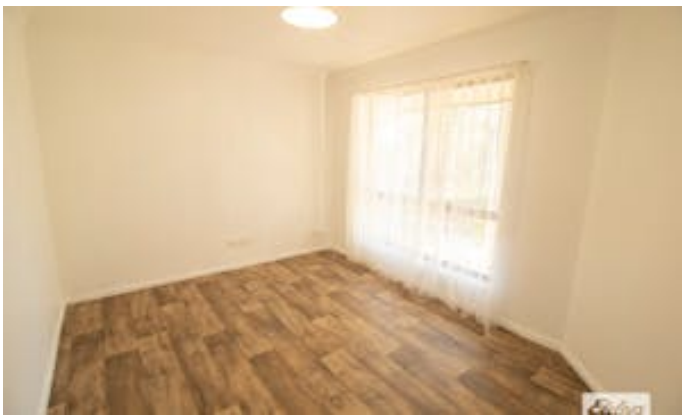
**Offer above \$785,000**

**CONTACT DETAILS**

**Elders Real Estate - Laidley**

101 Patrick Street  
Laidley, QLD  
07 5465 1800

**Dannina Penson**  
0401 076 220









FLOOR PLAN

This floor plan including furniture, fixture measurements and dimensions are approximate and for illustrative purposes only. BoxBrownie.com gives no guarantee, warranty or representation as to the accuracy and layout. All enquiries must be directed to the agent, vendor or party representing this floor plan.

39 Range Crescent, Laidley Qld 4341