



## 26/24 Lachlan Street, LIVERPOOL, NSW 2170

### Immaculate Unit

A perfect opportunity for the savvy property owner looking for a neat and tidy unit within Liverpool's CBD and within close distance to hospitals, train station, Westfield, parks and local schools. With a total area of 113sqm, this impressive 2 bedroom unit features:

- Good size kitchen with stone benchtops and gas cooktop
- Open plan living area with a great Northerly aspect
- High ceilings of 2.8 meters provides an abundance of natural lighting
- Both bedrooms with built-in robes and ensuite to main
- Brand new timber flooring throughout and freshly painted
- Internal laundry and split system air-conditioner
- Secure complex with remote control access, single car space plus lock up storage cage

A great opportunity to either start or build your property portfolio. Call today for your

The particulars contained herein are supplied for information only and shall not be taken as a representation in any respect on the part of the vendor or its agent. Interested parties should contact the nominated person or office for full and current details.

**TYPE:** Sold

**INTERNET ID:** 98P1254

#### SALE DETAILS

**\$460,000**

#### CONTACT DETAILS

**Liverpool**

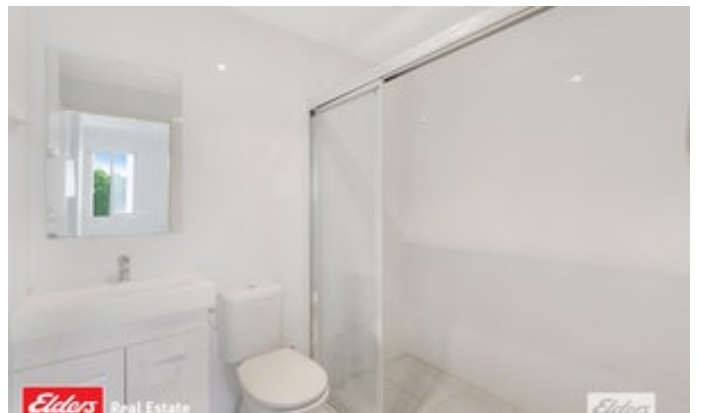
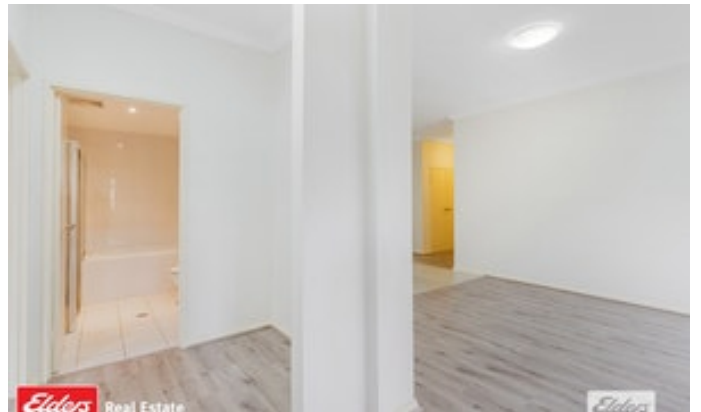
Suite 2/45 Scott Street  
LIVERPOOL, NSW  
(02) 9601 5999

**Frank Polistina**  
0407 406 673

private viewing.

Other features: Car Parking - Basement, Close to Schools, Close to Shops, Close to Transport

- Building Area: 113.00 square metres
- Bedrooms: 2
- Bathrooms: 2
- Car Parks: 1
- Air Conditioning
- Floorboards









**26/24 Lachlan St  
Liverpool 2170**

Scales in metres. Indicative only. Dimensions are approximate. All information contained here in is gathered from sources we believe to be reliable. However we cannot guarantee its accuracy and interested persons should rely on their own enquires.