



## 4/25 Grimson Crescent, LIVERPOOL, NSW 2170

### Brand New Luxury Townhouse - Only 1 Remains

Presenting this brand new 2 bedroom townhouse with luxurious finishes throughout. Situated in a friendly small complex of only 4 townhouses and with an eye for detail at every glance, particular features include:

- Ultra modern kitchen, gas appliances and plenty of storage
- Fully tiled downstairs and carpeted main bedroom
- Large main bedrooms with built-in robes and ensuite
- Ducted air-conditioning and alarm system included
- Good size backyard with side access
- Allocated parking spaces

Only 1 remains

If you're looking for the pursuit of excellence in a small friendly complex we highly

The particulars contained herein are supplied for information only and shall not be taken as a representation in any respect on the part of the vendor or its agent. Interested parties should contact the nominated person or office for full and current details.

**TYPE:** Sold

**INTERNET ID:** 98P1277

#### SALE DETAILS

**\$695,000**

#### CONTACT DETAILS

**Liverpool**

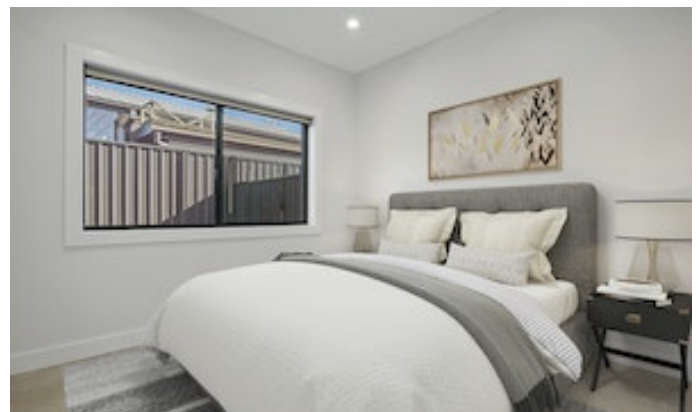
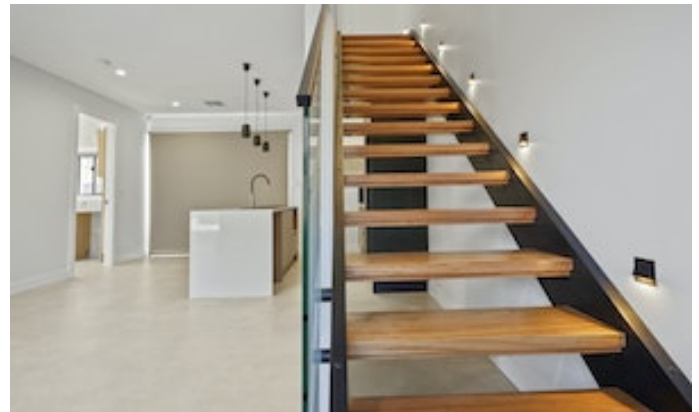
Suite 2/45 Scott Street  
LIVERPOOL, NSW  
(02) 9601 5999

**Frank Polistina**  
0407 406 673

recommend an inspection today by contacting Frank Polistina on 0407406673

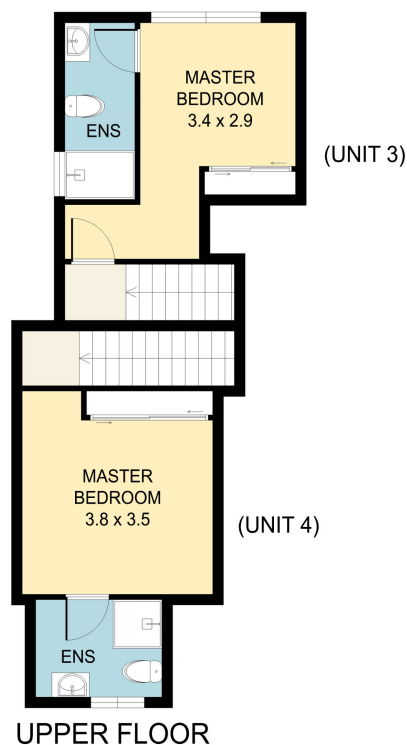
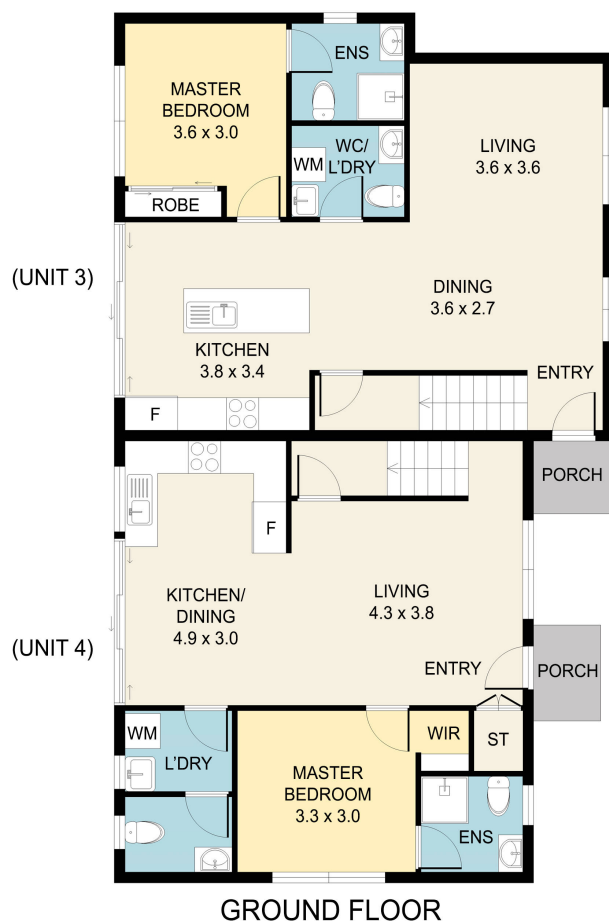
Other features: Car Parking - Surface, Close to Schools, Close to Shops, Close to Transport

- Bedrooms: 2
- Bathrooms: 2
- Car Parks: 2









### 3 & 4 /25 GRIMSON CRESCENT, LIVERPOOL

Disclaimer: Dimensions are approximate and should only be used as a guide.  
All information contained herein is gathered from sources we believe to be reliable.  
However, We cannot guarantee its accuracy and interested parties should rely their own enquiries

