



5/6 Plum Close, CASULA, NSW 2170

This one's for you!

This brick veneer home is perfect for the first home buyer looking for an immaculate property as all the hard work has been done, just bring your furniture.

Located in a quiet, well-maintained complex of only 10 townhouses with 80% owner occupied, which is extremely rare in today's market.

Features include:

- Separate lounge and dining areas
- 3 good size bedrooms, all with large built-in robes and ensuite to main
- Large, covered pergola area
- Ducted air-conditioning
- Extra storage space throughout the home
- Great sized backyard with side access

TYPE: Sold

INTERNET ID: 98P1489

SALE DETAILS

\$746,000

CONTACT DETAILS

Liverpool

Suite 2/45 Scott Street
LIVERPOOL, NSW
(02) 9601 5999

Frank Polistina

0407 406 673

- Family friendly complex with fantastic neighbours

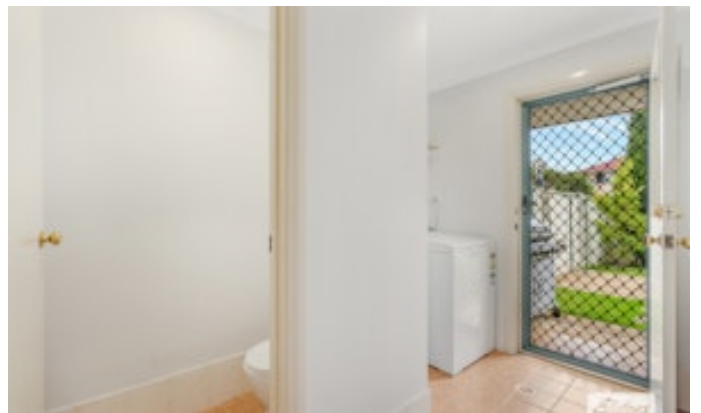
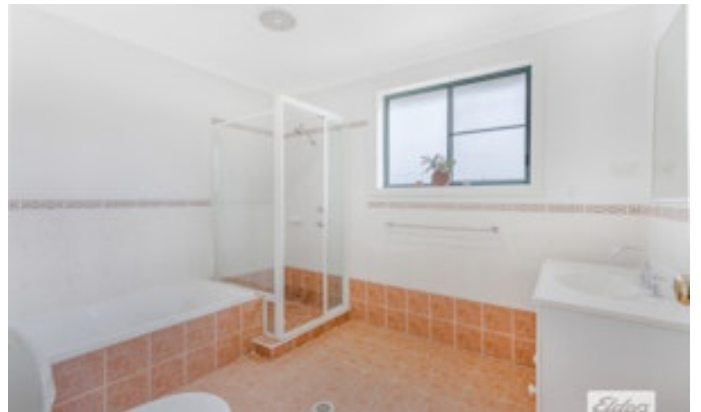
This is a superb opportunity for a young family looking to enter the property market at an entry level price with nothing else to spend. Contact Frank Polistina today for your private inspection.

Investors note: Potential rental return of \$580 per week

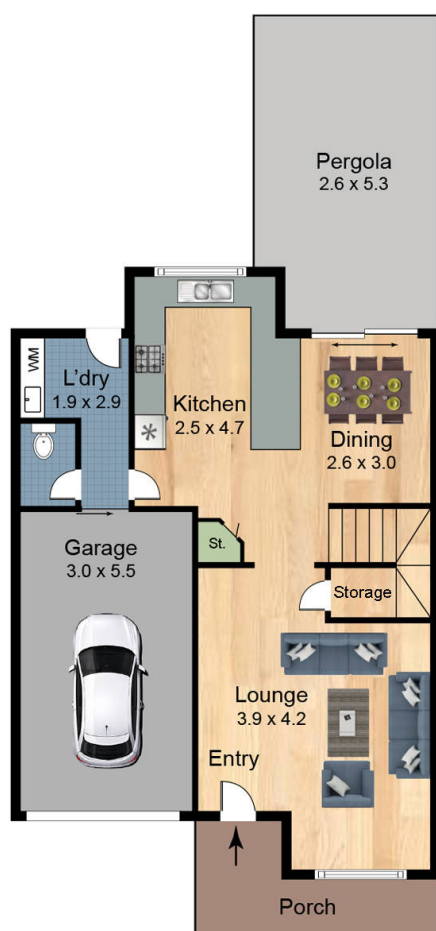
Other features: Car Parking - Surface, Carpeted, Close to Schools, Close to Shops, Close to Transport

- Bedrooms: 3
- Bathrooms: 2
- Single garage
- Floorboards

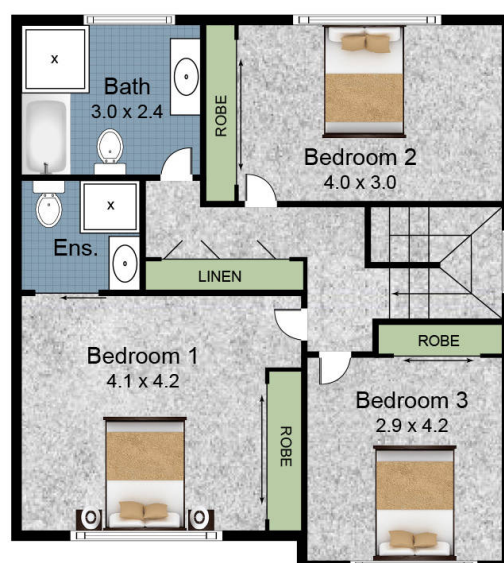








Ground Floor



First Floor



5/6 Plum Close Casula 2170

Scales in metres. Indicative only. Dimensions are approximate. All information contained here in is gathered from sources we believe to be reliable. However we cannot guarantee its accuracy and interested persons should rely on their own enquires.

