



## 1/9 Weir Crescent, LURNEA, NSW 2170

### Front Townhouse in Great Complex

Located in a well maintained complex of 8 townhouses is this immaculate townhouse located within close distance to schools, local shops, parks, public transport and Liverpool's CBD.

Features 3 good size bedrooms, all with built-in wardrobes, main with ensuite and balcony, separate lounge and dining rooms, powder room, good size kitchen, spacious back yard and lock up garage.

Perfect for the owner occupier or the savvy investor with potential weekly rental return of approximately \$550 per week.

Other features: Close to Schools, Close to Shops, Close to Transport

- Bedrooms: 3
- Bathrooms: 2
- Car Parks: 1
- Single garage

**TYPE:** Sold

**INTERNET ID:** 98P1499

#### **SALE DETAILS**

**\$682,000**

#### **CONTACT DETAILS**

**Liverpool**

Suite 2/45 Scott Street  
LIVERPOOL, NSW  
(02) 9601 5999

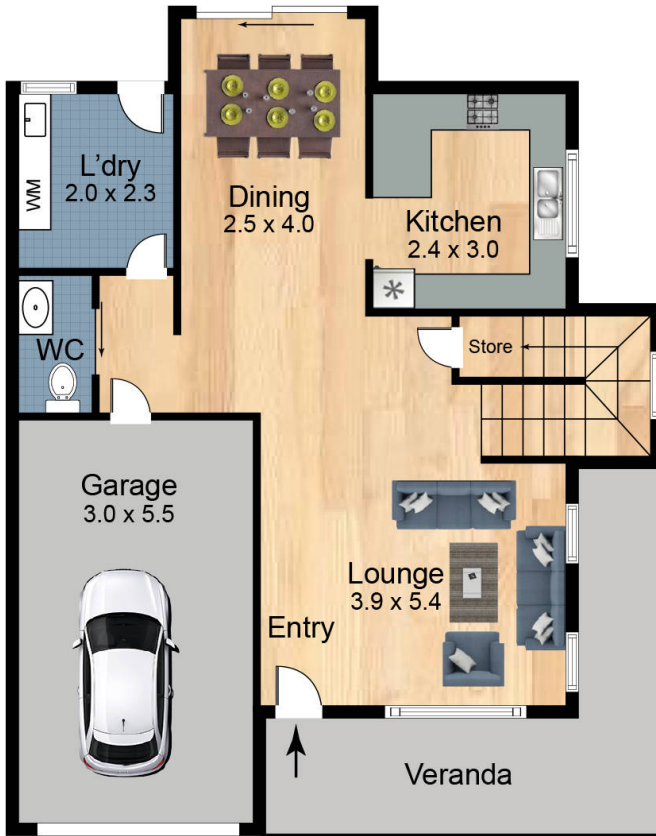
**Frank Polistina**  
0407 406 673



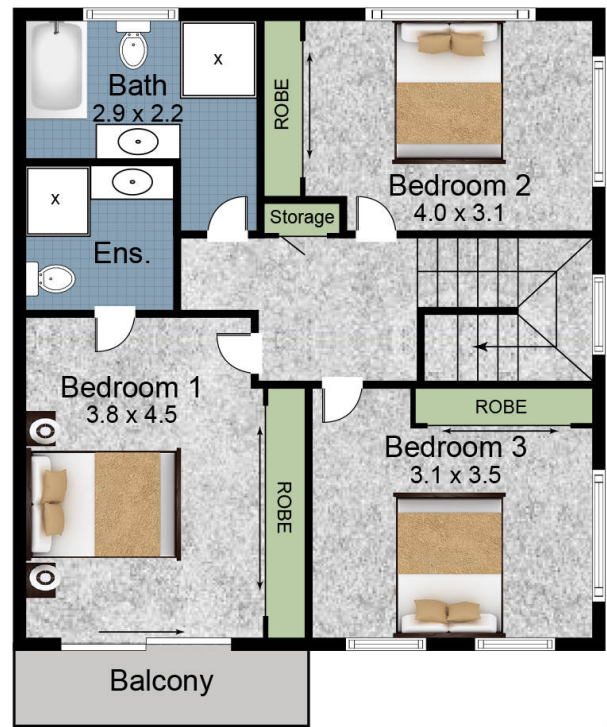








Ground Floor



First Floor



**1/9-11 Weir Cres  
Lurnea 2170**

Scales in metres. Indicative only. Dimensions are approximate. All information contained here in is gathered from sources we believe to be reliable. However we cannot guarantee its accuracy and interested persons should rely on their own enquires.