

68 Rundle Road, BUSBY, NSW 2168

Affordable Potential on a Prime 562sqm Block – Must Be Sold!

Whether you're a first home buyer eager to break into the market, a savvy investor chasing strong returns, or a builder/developer seeking your next project, 68 Rundle Road, Busby is not to be overlooked.

Set on a level 562sqm block with a generous 15.54m frontage, this neat and comfortable home offers plenty of scope to add value or rebuild down the line. Inside you'll find:

- 3 well-sized bedrooms
- Separate lounge room
- Original kitchen with eat-in dining area
- Internal bathroom and separate laundry
- Beautiful hardwood timber floors ready for a revamp

In its current condition, the property would return approximately \$525 per week, making

The particulars contained herein are supplied for information only and shall not be taken as a representation in any respect on the part of the vendor or its agent. Interested parties should contact the nominated person or office for full and current details.

TYPE: Auction

INTERNET ID: 98P2031

AUCTION DETAILS

2:00pm, Saturday
September 6th, 2025

CONTACT DETAILS

Leppington

Shop 4.04 / 5 Emerald Hills
Boulevard
LEPPINGTON, NSW
02 8797 3177

Frank Polistina
0407 406 673

it an attractive option for investors. The flat, regular-shaped block also offers excellent potential for a knockdown rebuild or the addition of a granny flat (STCA).

Auction on site â## Saturday 06 September at 2:00pm.

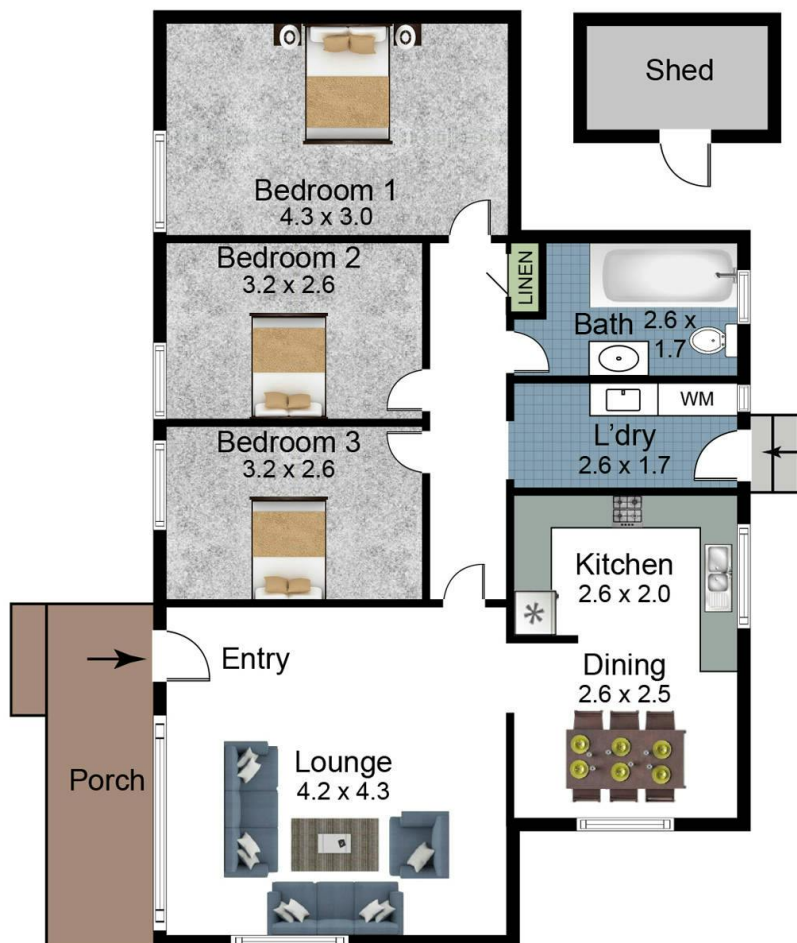
To arrange a private inspection, request the contract, or find out more, contact Frank Polistina on 0407 406 673.

- Land Area 562.00 square metres
- Bedrooms: 3
- Bathrooms: 1









68 Rundle Road Busby 2168

Scales in metres. Indicative only. Dimensions are approximate. All information contained here in is gathered from sources we believe to be reliable. However we cannot guarantee its accuracy and interested persons should rely on their own enquires.