

16 Ellison Street, MARSDEN PARK, NSW 2765

An Ex-Display Masterpiece That Redefines Living

This is not your average family home!

Built by Eagle Homes as a statement display residence, 16 Ellison Street is a one-of-a-kind property that blends cutting-edge design with luxurious inclusions rarely seen in the Marsden Park display village.

From the moment you step inside, you'll notice the difference. Oversized 2400mm x 800mm floor tiles set the tone for sleek sophistication, flowing seamlessly through the expansive open-plan living quarters. The chef's kitchen is a true showpiece, complete with a butler's pantry, inbuilt fridge, and a servery window opening directly onto the alfresco entertaining area—designed for hosting in effortless style.

At the heart of the home, full-height glass sliding doors frame a stunning modern palm feature, bringing light, greenery, and architectural drama into the living space.

Upstairs is nothing short of breathtaking—an entire parent's retreat dedicated to privacy and indulgence. The master suite boasts its own mini bar, a luxurious ensuite, and an oversized walk-in robe with a sitting area. A private upstairs lounge overlooks the lower

TYPE: For Sale

INTERNET ID: 98P2041

SALE DETAILS

**\$1,750,000 -
\$1,850,000**

CONTACT DETAILS

Leppington

Shop 4.04 / 5 Emerald Hills
Boulevard
LEPPINGTON, NSW
02 8797 3177

Frank Polistina
0407 406 673

The particulars contained herein are supplied for information only and shall not be taken as a representation in any respect on the part of the vendor or its agent. Interested parties should contact the nominated person or office for full and current details.

floor, making this retreat feel like a boutique hotel experience within your own home.

The ground level includes three additional bedrooms, one featuring its own ensuite and walk-through robe, making it perfect for guests or extended family.

This home is bold, distinctive, and unapologetically unique-crafted for those who want more than just four walls, but a lifestyle that turns heads.

- A home that needs to be seen to be believed.

Other features: Carpeted, Close to Schools, Close to Shops, Close to Transport, Openable Windows

- Land Area 415.00 square metres
- Bedrooms: 4
- Bathrooms: 3
- Double garage
- Ensuite





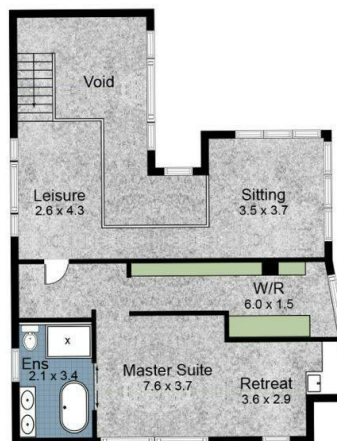




Ground Floor



First floor



16 Ellison St, Marsden Park

Scales in metre. Indicative only. Dimensions are approximate. All information contained in here is gathered from sources we believe to be reliable. However we cannot guarantee its accuracy and interested persons should rely on their own enquiries.