



333b Elizabeth Drive, MOUNT PRITCHARD, NSW 2170

Spacious Family Home with Pool & Entertainment!

Perfectly positioned just minutes from Liverpool's vibrant CBD, quality schools, and public transport, this impressive 9-year-old double storey home is the ultimate family haven combining space, comfort, and convenience.

Set on a generous 807m² block, this modern residence has been thoughtfully designed to accommodate growing families, entertainers, and those who appreciate quality living.

Other features: Close to Schools, Close to Shops, Close to Transport, Exhaust, Openable Windows, Pool

- Land Area 807.00 square metres
- Bedrooms: 4
- Bathrooms: 4
- Car Parks: 2
- 3 car garage
- Ensuite

TYPE: For Sale

INTERNET ID: 98P2044

SALE DETAILS

Contact Agent

CONTACT DETAILS

Leppington

Shop 4.04 / 5 Emerald Hills
Boulevard

LEPPINGTON, NSW

02 8797 3177

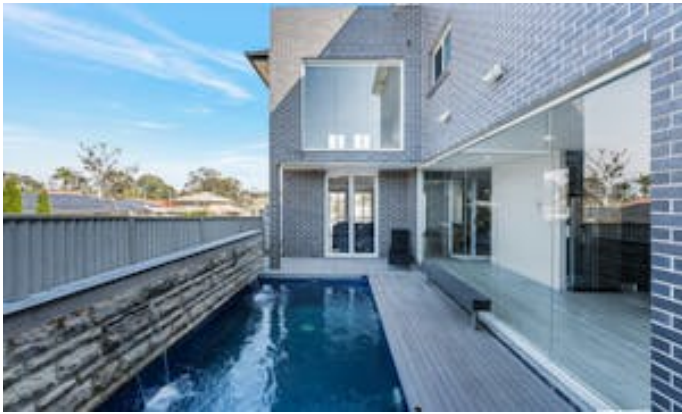
Domenic Polistina

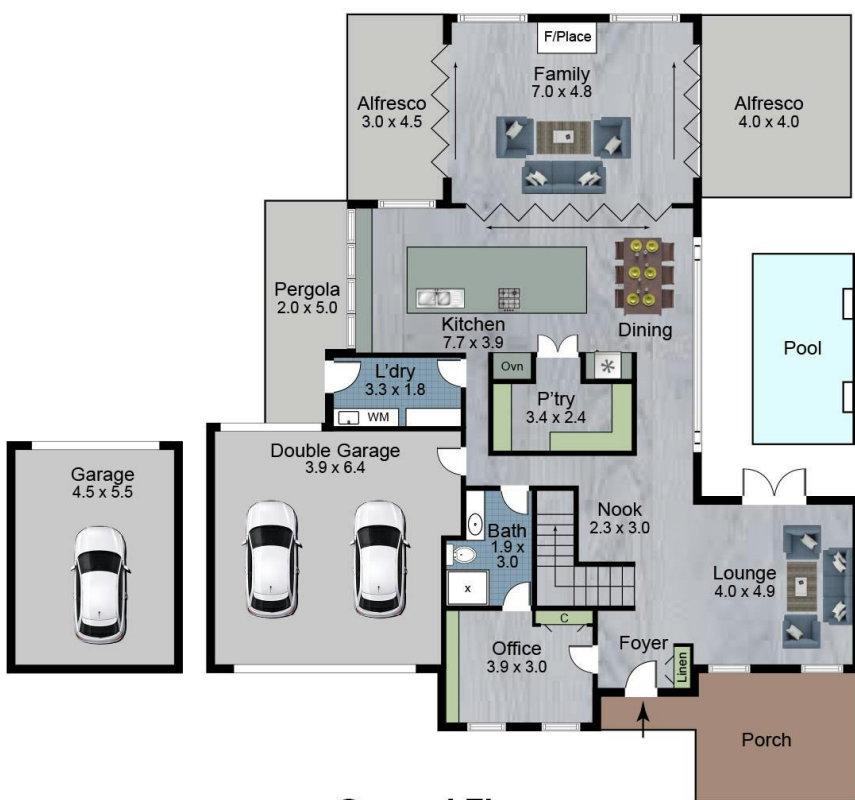
0418 460 696



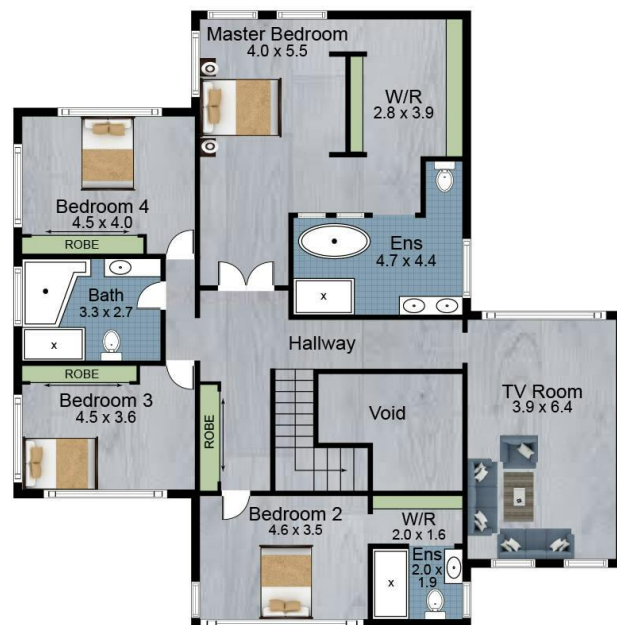








Ground Floor



First Floor



**333B Elizabeth Drive
Mount Pritchard 2170**

Scales in metres. Indicative only. Dimensions are approximate. All information contained here in is gathered from sources we believe to be reliable. However we cannot guarantee its accuracy and interested persons should rely on their own enquires.

