



## 18 Perina Close, CASULA, NSW 2170

### Spacious Family Living in a Prime Glen Regent Estate Location

Positioned in a quiet cul-de-sac within the highly sought-after Glen Regent Estate, this substantial split-level residence offers exceptional space, flexibility and low-maintenance living for growing or extended families.

Designed to accommodate modern family life, the home boasts five generous bedrooms across the upper levels, plus a dedicated study ideal for working from home or additional accommodation. Two bedrooms enjoy the convenience of private ensuites, while all bedrooms feature built-in wardrobes, ensuring ample storage throughout.

At the heart of the home is a spacious timber kitchen complete with quality hardwood cabinetry, gas cooking and plenty of bench and cupboard space. Multiple living and dining zones provide room for the whole family to relax and entertain, with tiled living areas enhancing durability and easy maintenance, while carpeted bedrooms add warmth and comfort.

Step outside to discover a fully covered wrap-around pergola that creates a private outdoor retreat perfect for year-round entertaining. The low-maintenance surrounds allow you to spend more time enjoying the home and less time maintaining it.

The particulars contained herein are supplied for information only and shall not be taken as a representation in any respect on the part of the vendor or its agent. Interested parties should contact the nominated person or office for full and current details.

**TYPE:** For Sale

**INTERNET ID:** 98P2114

**SALE DETAILS**

**\$1,300,000**

**CONTACT DETAILS**

**Leppington**

Shop 4.04 / 5 Emerald Hills

Boulevard

LEPPINGTON, NSW

02 8797 3177

**Frank Polistina**

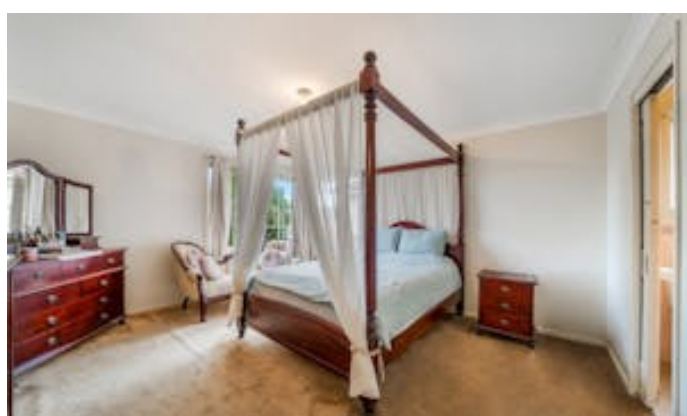
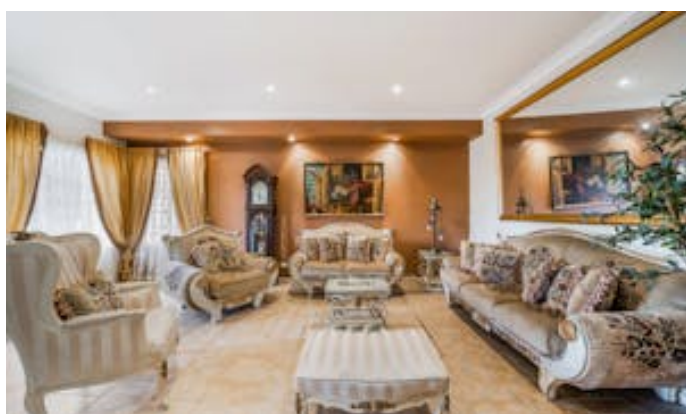
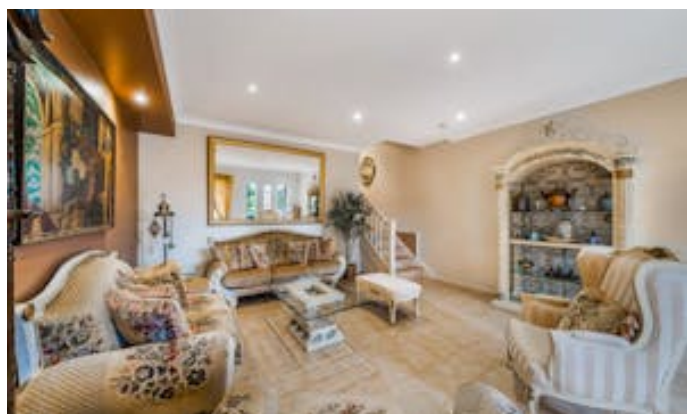
0407 406 673

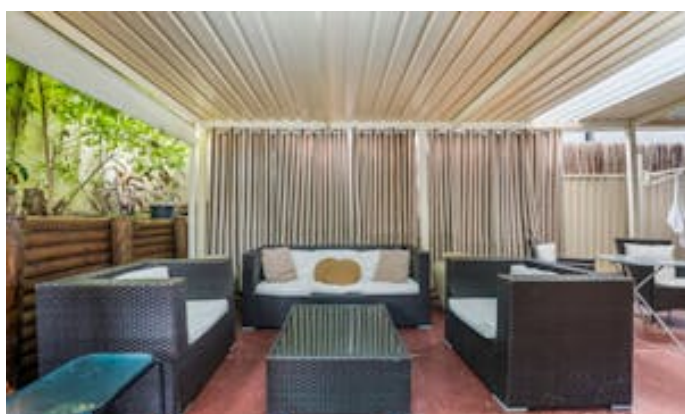
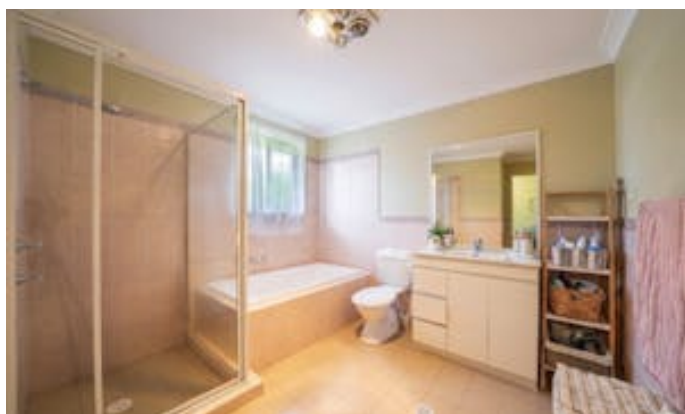
Additional features include a spacious garage with high ceilings, internal access to the laundry, and a practical floorplan that caters to families of all sizes.

Conveniently located just moments from Casula Station, Casula Central Shopping Centre, Woolworths, local parks and a selection of quality schools including Casula High School and All Saints Catholic College, this is an outstanding opportunity to secure a spacious family home in one of Casula's most desirable neighbourhoods.

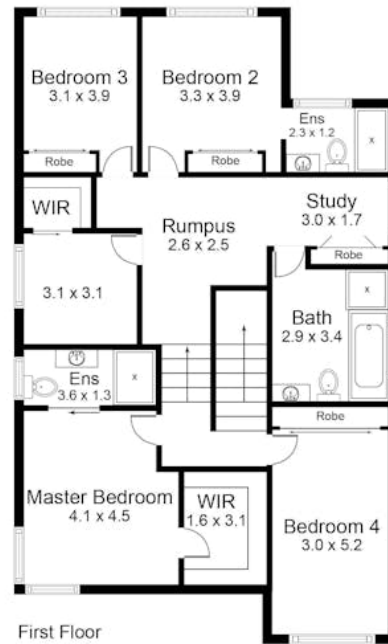
Other features: Carpeted, Close to Schools, Close to Shops, Close to Transport, Openable Windows

- Land Area 335.00 square metres
- Bedrooms: 5
- Bathrooms: 3
- Double garage
- Ensuite









18 Perina Close, Casula 2170

Scales in metre. Indicative only. Dimensions are approximate. All information contained herein is gathered from sources we believe to be reliable. However, we cannot guarantee its accuracy and interested persons should rely on their own enquiries.

