

146 Belmore Street, TAMWORTH, NSW 2340

Central Location

Ideally located close to schools, Southgate shopping centre, West Leagues Club and all essential amenities, this highset home offers easy everyday living with a stunning outlook over Scully Park Regional Sporting Precinct - right in the heart of Tamworth.

Step inside to find a renovated kitchen and bathroom, polished timber floors, and comfortable living throughout. Climate control is well covered with ducted evaporative cooling, a reverse cycle split system, and gas heating for year-round comfort.

Outside, enjoy a spacious covered rear entertaining area, perfect for gatherings, plus a separate shed/garage and an additional garden shed providing abundant storage options.

Key Features

- Central West Tamworth location
- Elevated position with views of Scully Park Stadium
- Renovated kitchen & bathroom

The particulars contained herein are supplied for information only and shall not be taken as a representation in any respect on the part of the vendor or its agent. Interested parties should contact the nominated person or office for full and current details.

TYPE: For Sale

INTERNET ID: L11647144

SALE DETAILS

\$619,000

CONTACT DETAILS

**Elders Real Estate
Tamworth**

247 Peel Street
Tamworth, NSW
02 6766 1666

Jacob Hart
0467777535

- Polished timber floors
- Ducted evaporative cooling plus reverse cycle split system
- Gas heating
- Covered rear entertaining area
- Separate shed/garage plus garden shed

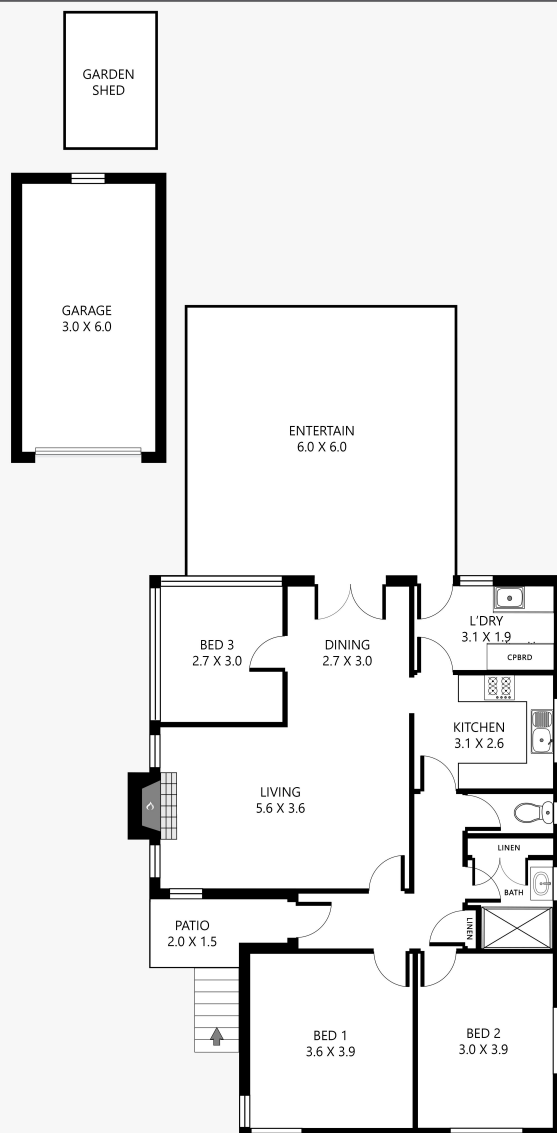
Call or enquire today for inspection times

- Land Area 670.00 square metres
- Bedrooms: 3
- Bathrooms: 1
- Single garage
- Floorboards





146 Belmore Street, West Tamworth



Disclaimer: This plan is not to scale and is for illustrative purposes only. Measurements are approximate only. Placement of doors, windows and all other items are approximate. Elders gives no guarantee or warranty as to the accuracy or layout. Any person using this information should rely on their own enquiries.

Elders