



## 1557 Tarana Road, LOCKSLEY, NSW 2795

"Glenmir" - Views as Far as the Eye Can See!

**104.81 hectares, 258.99 acres**

This outstanding 259\*acre holding sits high above the historic Locksley Valley, offering some of the most expansive views of the mountain ranges and beyond. Just 177\*km from Sydney CBD, 28\*km from Bathurst and 9\*km from O'Connell.

- 259\* acres subdivided into 8 paddocks a mix of open grazing and timbered country
- Constructed in 2004, this country-style brick veneer homestead offers four bedrooms and two bathrooms, perfectly designed to capture its elevated position and outlook. Light-filled throughout, the home enjoys outstanding views across the valley and beyond
- Large open-plan country kitchen with timber benchtops, a walk-in butler's pantry, and adjoining family and dining room
- Comfort is assured with a combustion wood heater and reverse-cycle air conditioning
- The master bedroom includes an en-suite, walk-in robe, and reverse-cycle air conditioning.

**TYPE:** Auction

**INTERNET ID:** L14788218

### AUCTION DETAILS

10:30am, Friday October 17th, 2025

### CONTACT DETAILS

**Elders Emms Mooney**  
152 William Street  
Bathurst, NSW  
02 6331 0744

**Sam D'Arcy**  
0401612996

- Ceiling, floor, and internal walls all fully insulated. Hardwood flooring flows throughout
- The double garage features bi-fold doors that open to create a superb indoor/outdoor entertaining space
- Guest quarters upstairs with reverse-cycle air conditioning, bathroom, and an attached carport
- A two-metre-wide veranda wraps right around the home, offering multiple spots to sit, relax, and take in the views
- 18m x 9m shed with concrete floor and power, including two open bays and one enclosed bay. This versatile shed also incorporates self-contained guest accommodation with bathroom and kitchenette, plus a generous games/entertaining room
- Suited to run sheep or cattle, steel cattle yards with crush and loading ramp and two-stand shearing shed, with space for machinery
- Water storage includes 3 x 22,500L tanks, 1 x 120,000L tank, 2 x 110,000L concrete tanks, and 1 x 10,000L tank
- Low-maintenance cool climate garden with a thoughtful mix of European and native species and established fruit trees
- Explore granite outcrops and the historic Bush Rangers lookout with 360° views of the district
- Ten minutes from both O'Connell and Tarana villages with pubs, O'Connell Public School and cafes.

"Glenmir" represents a rare opportunity to secure a blue-ribbon holding in a tightly held location. Every improvement has been sensibly designed and carefully maintained. All the hard work has been done - just move in and enjoy.

Auction:

Friday 17th October, 2025

10:30am

The Auction Centre

152 William Street, Bathurst

Disclaimer: The information provided in this advertisement is deemed reliable but not guaranteed. Prospective buyers are advised to conduct their own inspections and due diligence.

- Land Area 104.813581 hectares
- Bedrooms: 4
- Bathrooms: 2



**HOMESTEAD**

<b>Bedrooms</b>	4
<b>Bathrooms</b>	2







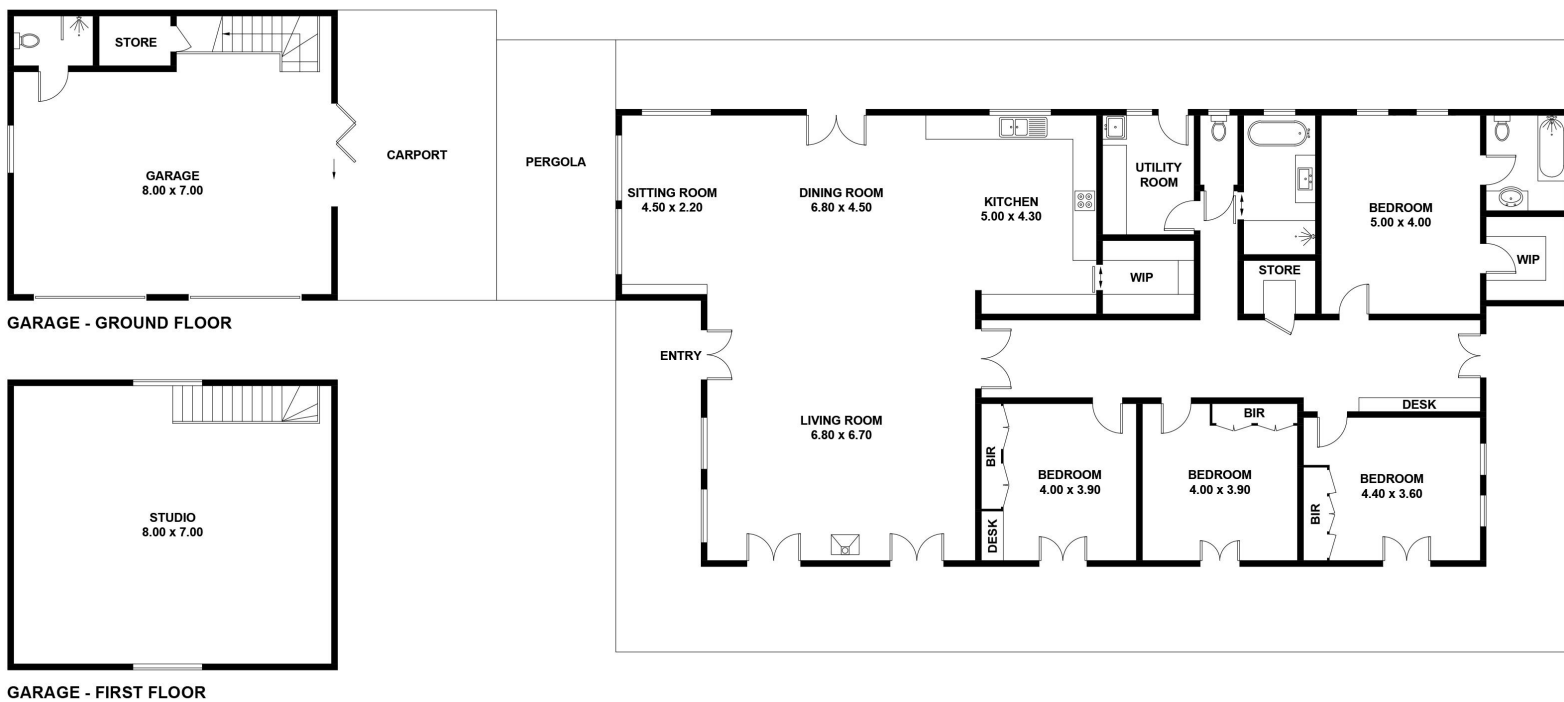












1557 TARANA ROAD, LOCKSLEY  
 APPROXIMATE GROSS INTERNAL AREA = 238.3 SQ M  
 GARAGE = 112.2 SQ M  
 TOTAL = 350.5 SQ M (EXCLUDING CARPORT)

This plan is for layout guidance only. Not drawn to scale unless stated.  
 Windows and door openings are approximate. Whilst every care is taken in the preparation of this plan,  
 please check all dimensions, shapes and compass bearings before making any decisions reliant upon them.