



24A Sydney Road, BATHURST, NSW 2795

Private, Spacious and Contemporary

Tucked away in an extremely quiet and secluded setting, this exceptional family home at 24A Sydney Road offers a rare blend of privacy and in-town convenience. Meticulously maintained and extensively upgraded for modern living, this top-end brick veneer residence enjoys direct access to Learmonth Park and is designed for comfort, space and long-term ease. Recently painted externally and secured by a solar-powered electric gate, the home delivers a high level of finish throughout.

- Gourmet kitchen and dining area appointed with 40mm stone benchtops, stone splashback, induction cooktop, electric oven, country-style shaker doors, integrated dishwasher, walk-in pantry and 2.7-metre high ceilings in the dining zone
- Updated three-way main bathroom with terrazzo and subway floor-to-ceiling tiling and a bathtub
- Main ensuite finished in the same ultra-modern style
- Renovated laundry with shower and outdoor access
- Convenient downstairs powder room
- All bedrooms fitted with walk-in wardrobes and split systems

The particulars contained herein are supplied for information only and shall not be taken as a representation in any respect on the part of the vendor or its agent. Interested parties should contact the nominated person or office for full and current details.

TYPE: For Sale

INTERNET ID: L14790382

SALE DETAILS

By Negotiation

CONTACT DETAILS

Elders Emms Mooney
152 William Street
Bathurst, NSW
02 6331 0744

Kurt Waterford
0439642390

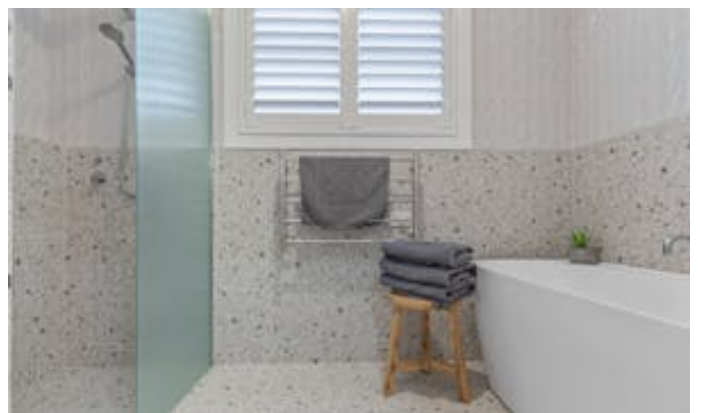
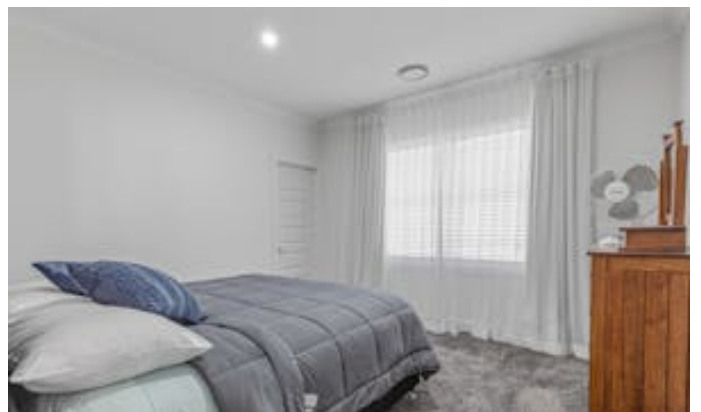
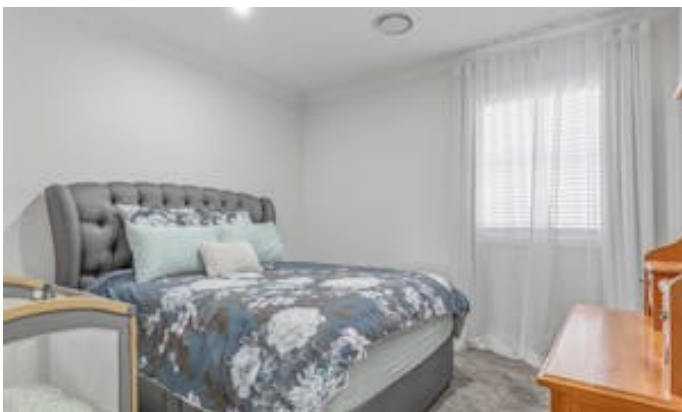
- Main bedroom with external doors opening to a private balcony
- Lounge room with external access
- Upstairs rumpus room with outdoor entertaining area and views over Learmonth Park
- Downstairs separate lounge with low-pi gas heater
- Ducted and zoned heating and cooling throughout
- Plantation shutters and sheer curtains
- Grand entryway with ample storage, coat hanging space and an upstairs walk-in linen cupboard
- Salt water mineral swimming pool with heat pump and glass balustrade
- Wrap-around verandas
- Fully irrigated native gardens
- Outdoor fire pit
- Security yard for dogs
- Underground tanks
- Very well-built brick veneer home with no cracks
- Recently painted exterior completed with scaffolding
- Extensively upgraded including new bathrooms, kitchen, laundry and yard, ensuring minimal maintenance for the next decade
- Rendered noise-reduction fence
- Insect screens throughout
- Battleaxe block with double carport, double garage and turning bay
- Extremely quiet and private neighbourhood with excellent separation from the street

Offering direct park access, comprehensive renovations and a high-quality build, this outstanding property represents a rare opportunity to secure a move-in-ready family home that combines privacy, modern amenities and an enviable lifestyle setting. Designed for ease, comfort and long-term enjoyment, 24A Sydney Road is a home that will impress on every level.

Disclaimer: All information contained herein is gathered from sources we believe reliable. We have no reason to doubt its accuracy, however, we cannot guarantee it.

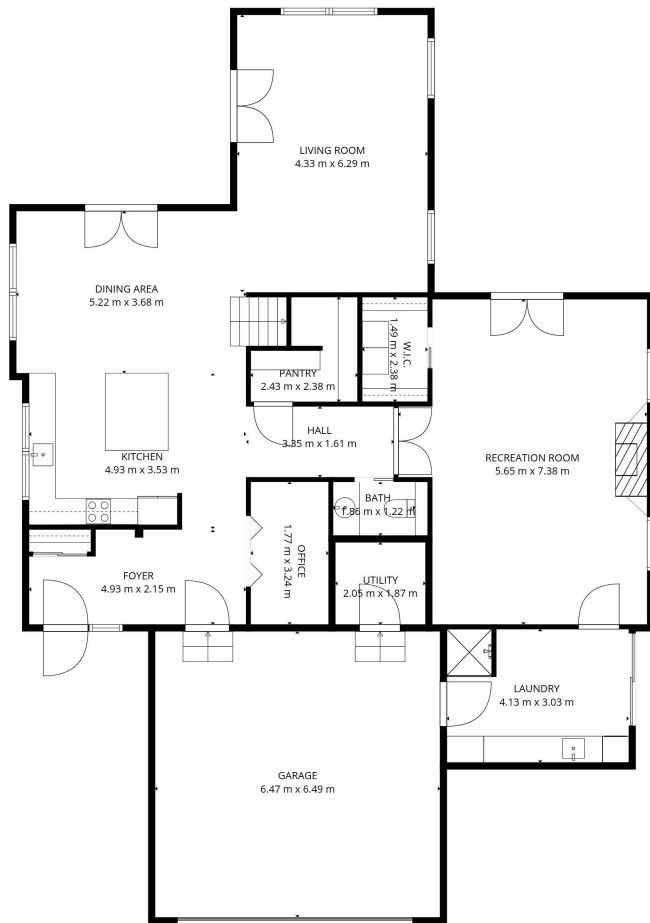
- Land Area 1,147.00 square metre
- Bedrooms: 4
- Bathrooms: 2
- 4 car garage
- Floorboards



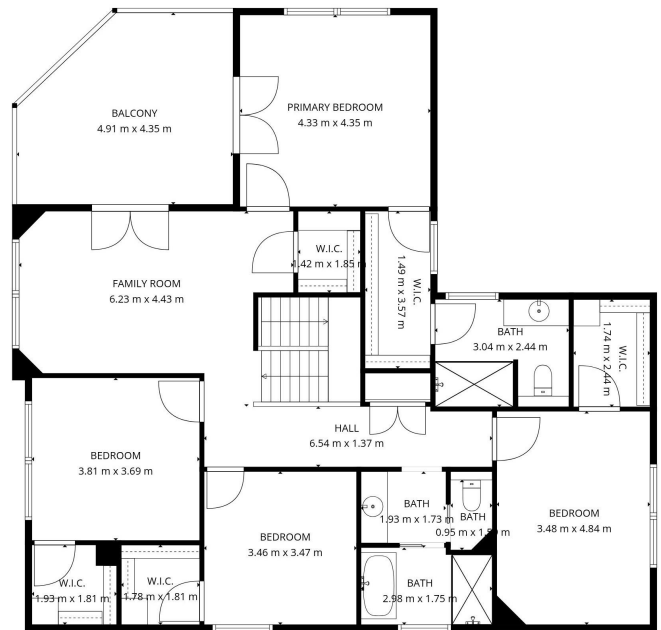








1st floor



2nd floor