



19 Prentice Avenue, TAMWORTH, NSW 2340

Country Elegance in the Heart of the City

Experience the perfect balance of country tranquillity and city convenience with this expansive and exquisitely upgraded 6-bedroom home. A private tree-lined entry sweeps you up into your own oasis, where every detail has been thoughtfully enhanced for comfort, style, and functionality.

From the moment you step inside, this home turns up the style and sophistication, highlighted by polished neutral tones, quality flooring, and timeless plantation shutters. High ceilings open up the sense of space across multiple living zones, including a formal lounge, separate dining, and a relaxed open-plan area.

The beautifully appointed kitchen is the heart of the home, featuring granite benchtops and premium Miele appliances with lush garden views framed by charming bay windows.

The superb master suite offers a walk-through robe and a contemporary ensuite with a stone-topped vanity and dual rain head shower. Four additional bedrooms come with built-in robes. The versatile 6th bedroom can act as a lower-level parents' retreat with internal and external access, built-in storage and an air conditioner. The bedroom can also function perfectly as a guest suite or home office.

The particulars contained herein are supplied for information only and shall not be taken as a representation in any respect on the part of the vendor or its agent. Interested parties should contact the nominated person or office for full and current details.

TYPE: For Sale

INTERNET ID: L16225356

SALE DETAILS

Contact Agent

CONTACT DETAILS

**Elders Real Estate
Tamworth**

247 Peel Street
Tamworth, NSW
02 6766 1666

Jacob Hart
0467777535

A well-appointed main bathroom boasts a shower, sunken bath, and separate WC, while the laundry includes direct yard access.

Additional features include:

- Ducted air conditioning
- Outstanding storage throughout
- Combustion fireplace
- 8kW Solar power for energy efficiency
- Water tanks (4,500L & 2,200L)

The landscaped front garden features steel and brick edging and vibrant new plantings, complemented by a retaining wall and asphalt driveway that leads up to the back of the house.

Enjoy multiple alfresco spaces with incredible views, ziplock blinds, and two external fans - perfect for year-round entertaining. The sparkling magnesium pool boasts a new pump, filter, robot cleaner, privacy screening, solar lighting, paving, and lush poolside gardens. The deck has been refurbished and now lights up at night with step lighting for added ambience.

Practical additions include new guttering and fascia, Crimsafe screens, window shutters, ceiling fans throughout, solar tubes for natural light, Cat5 cabling, security sensor lighting, and a one-key lock system for the entire home.

With lush buffalo lawns, timber screening, and meticulous bushland clearing, this property is fully set up and move-in ready, radiating pride of ownership.

Here, every upgrade has been made for both beauty and practicality - offering a rare lifestyle where luxury, privacy, and convenience meet.

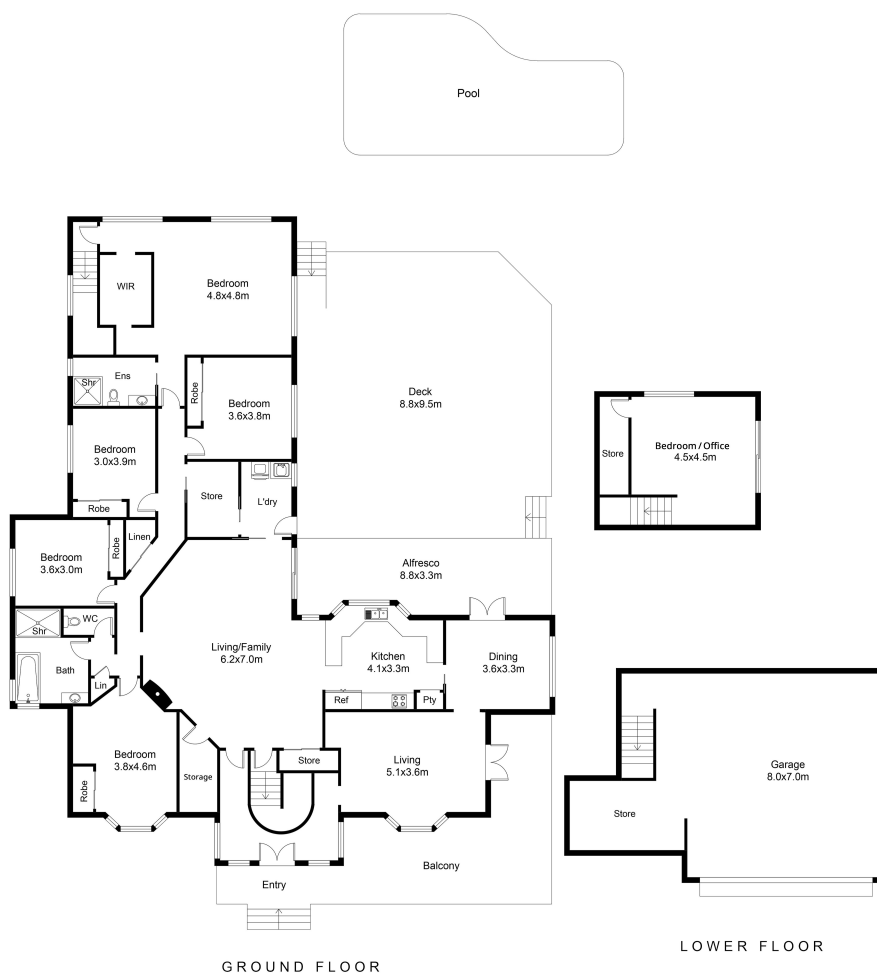
Call for viewing times today!

- Land Area 1,577.00 square metre
- Bedrooms: 6
- Bathrooms: 2
- Double garage
- Floorboards





19 Prentice Avenue, East Tamworth



Disclaimer: This plan is not to scale and is for illustrative purposes only. Measurements are approximate only. Placement of doors, windows and all other items are approximate. Elders gives no guarantee or warranty as to the accuracy or layout. Any person using this information should rely on their own enquiries.