



6B Hatfield Drive, DROUIN, VIC 3818

Low-Maintenance Living in a Prime Drouin Location

Perfectly positioned close to the Drouin township, train station, schools and caf  s, this stylish and low-maintenance home offers comfort and convenience in equal measure.

Featuring a light-filled open plan living and dining area through to the well-equipped kitchen with quality appliances and ample storage. Well-proportioned bedrooms with built in robes, a dual access bathroom providing ensuite convenience, separate w/c, split system heating and air-conditioning, and an enclosed private outdoor area complete the package.

Ideal for first home buyers, downsizers or investors seeking an easy-care property in a highly convenient location.

- Land Area 213.00 square metres
- Bedrooms: 2
- Bathrooms: 1
- Single garage
- Floorboards

TYPE: For Sale

INTERNET ID: L22936744

SALE DETAILS

\$450,000 - \$470,000

CONTACT DETAILS

Warragul

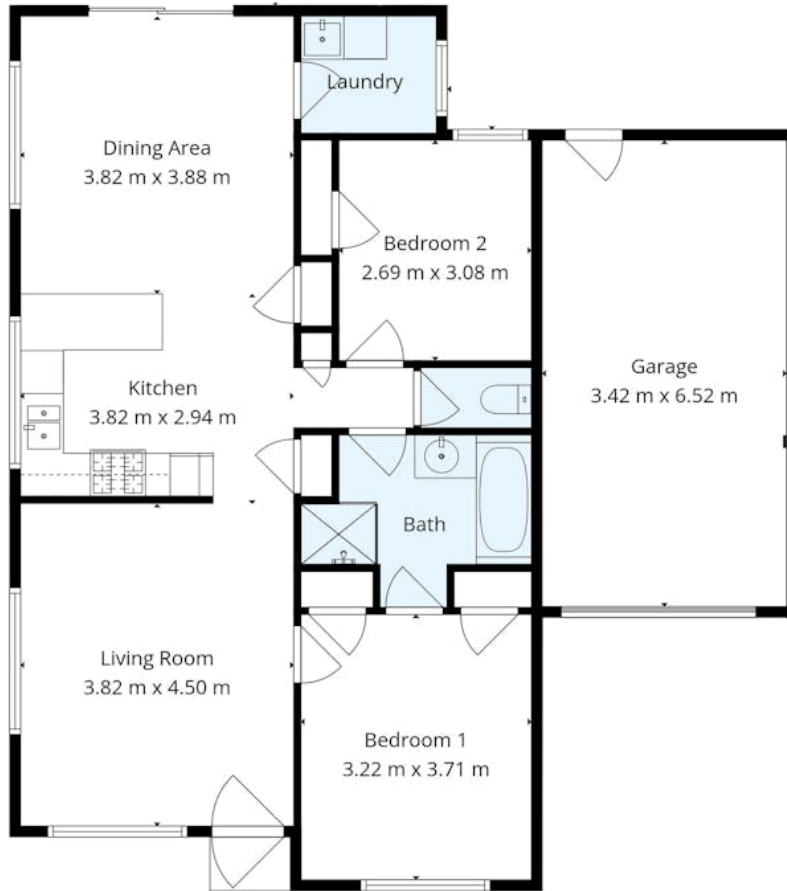
71 Queen Street
Warragul, VIC
03 5622 3800

Miranda Pike
0404193205









11/6B Hatfield Drive, Drouin

Total 11.94sqm

While every effort has been made to ensure the accuracy of the floor plan provided, all measurements are approximate and intended for illustration purposes only. We accept no responsibility for any errors, omissions, or inaccuracies. This plan is for illustrative purposes only and should be used as such by any prospective purchaser.

