



566 Nayook-Powelltown Road, PIEDMONT, VIC 3833

A Private Acreage Sanctuary

49.28 hectares, 121.77 acres

Arriving at this country-style estate, you'll feel the pace of life slow immediately. Wrapped in tranquillity and framed by sweeping views, the home sits perfectly among established gardens and productive, fully fenced paddocks, offering the ideal blend of comfort, space and true lifestyle freedom.

Inside, the residence is beautifully presented with modern touches while still retaining its warm, country character enhanced by high ceilings, timber floors and multiple living zones for families, entertainers or those wanting room to spread out.

Outdoors is where this property truly shines. With a mix of open pasture and native bush, there's ample space for grazing stock, horses and exploring on motorbikes. It's also a haven for nature lovers, you may spot deer, eagles, wombats and other local wildlife passing through this picturesque pocket.

Whether you're a dedicated horse enthusiast, avid bird watcher, hobby farmer or simply chasing a private escape on acreage (without being isolated from amenities), this is a

TYPE: For Sale

INTERNET ID: L25261184

SALE DETAILS

**\$1,800,000 -
\$1,900,000**

CONTACT DETAILS

Warragul

71 Queen Street
Warragul, VIC
03 5622 3800

Harley Robinson
0400119415

property that invites you to live the lifestyle you've been dreaming about.

On offer:

- 4 generous bedrooms
- 2 bathrooms
- 3 living areas plus a dedicated study
- Large kitchen with walk-in pantry
- High ceilings and timber floors
- Electric ducted heating plus a wood fire to the main living area
- 120 acres of perfectly flat land
- Established fruit trees and mature gardens
- Horse arena and round yards
- Separate hut tucked privately within the property

With so many features already in place and endless ways to enjoy the land, this is an opportunity packed with lifestyle potential ready for the next owners to make it their own.

- Land Area 49.28 hectares
- Bedrooms: 4
- Bathrooms: 2

HOMESTEAD

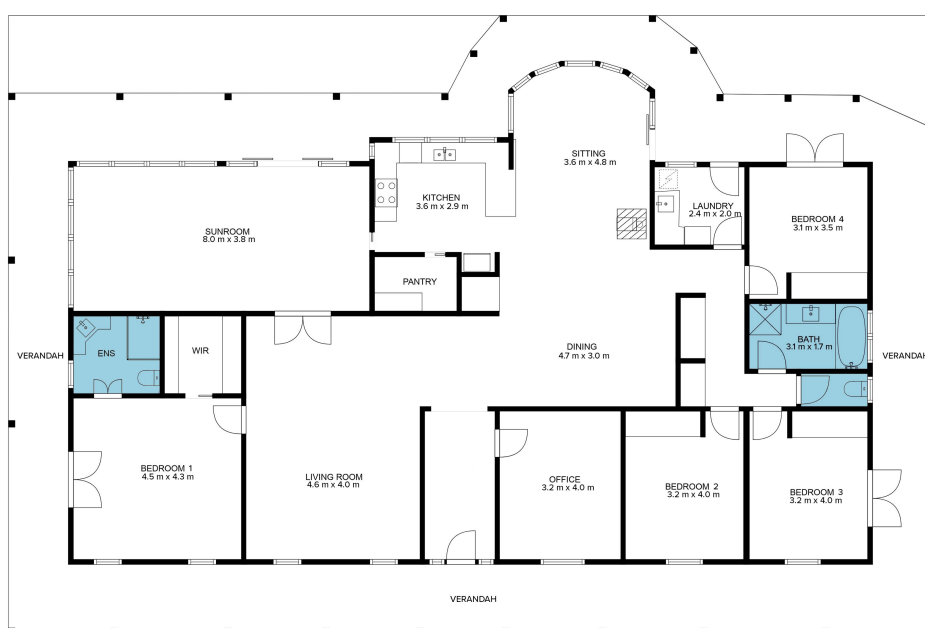
Bedrooms	4
Bathrooms	2











Total 26.00sqs

Whilst every attempt has been made to ensure the accuracy of the floor plan contained here, all measurements are approximate and are for illustration purposes only. No responsibility is taken for any error, omission or misstatement.