

2 Yaldara Crescent, COWRA, NSW 2794

Spacious Family Living in North Cowra

Positioned in a quiet cul-de-sac in sought-after North Cowra, this well-maintained brick home offers space, flexibility and a lifestyle of convenience, just moments from schools, parks and childcare.

Designed with family living in mind, the home features five bedrooms (three with built-ins), a renovated kitchen with island bench and walk-in pantry, and multiple living zones including a separate lounge and dining area. The master bedroom includes a private ensuite, while the main bathroom is complete with a freestanding bath.

A versatile rear sunroom provides the perfect space for a home office, kids' playroom or additional living area. Outside, a double lock-up garage ensures secure off-street parking, with further features including split system air conditioning and excellent storage throughout.

Set on a generous block in a tightly held location, this home presents a solid opportunity for families or buyers looking to add value over time.

Key Features:

The particulars contained herein are supplied for information only and shall not be taken as a representation in any respect on the part of the vendor or its agent. Interested parties should contact the nominated person or office for full and current details.

TYPE: For Sale

INTERNET ID: L25843370

SALE DETAILS

Price guide \$620,000 - \$660,000

CONTACT DETAILS

Elders Emms Mooney

152 William Street
Bathurst, NSW
02 6331 0744

Adam Gambrill
0417533453

- Five bedrooms, three with built-in wardrobes
- Renovated kitchen with island bench & walk-in pantry
- Multiple living areas plus separate dining
- Master with ensuite; main bathroom with freestanding bath
- Rear sunroom ideal as study or playroom
- Double lock-up garage
- Split system air conditioning
- Land rates: \$2,242pa*

Homes in this location are consistently in demand, inspect to appreciate all it has to offer.

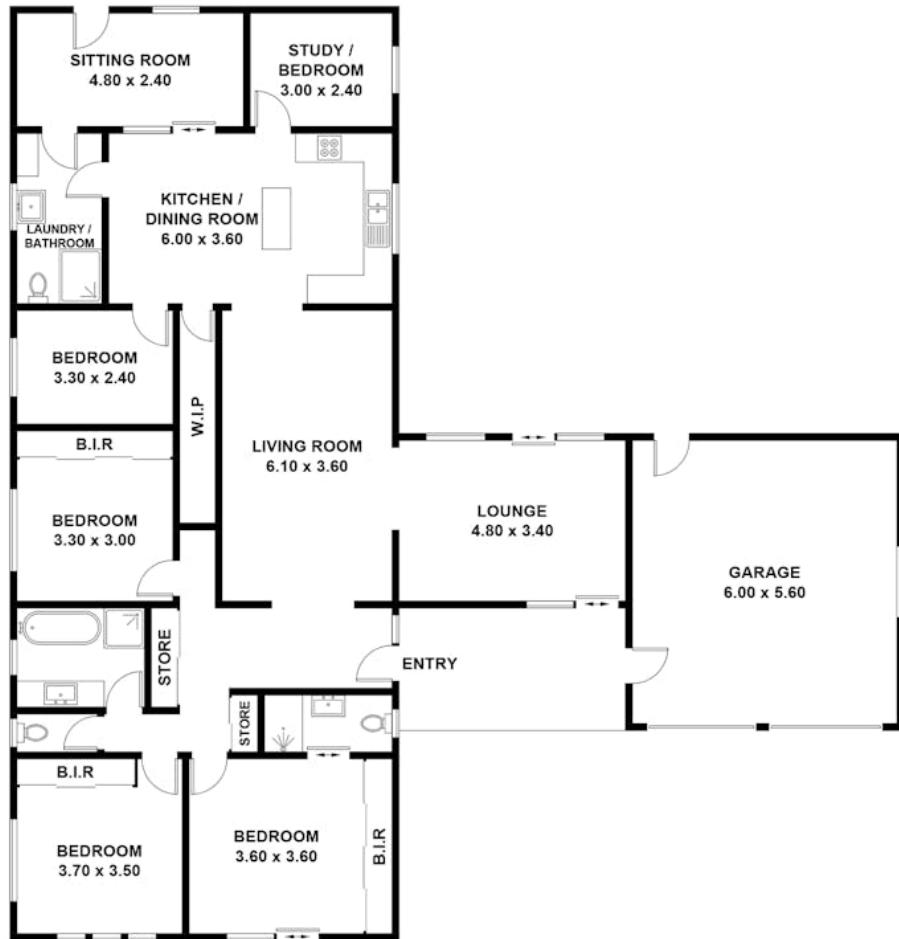
Disclaimer: All information contained herein is gathered from sources we believe reliable. We have no reason to doubt its accuracy; however, we cannot guarantee it.

- Land Area 702.00 square metres
- Bedrooms: 5
- Bathrooms: 3
- Double garage
- Ensuite
- Floorboards









2 YALDARA CRES, COWRA
 APPROXIMATE GROSS INTERNAL AREA = 172.2 SQ M
 GARAGE = 33.7 SQ M
 TOTAL = 205.9 SQ M

This plan is for layout guidance only. Not drawn to scale unless stated.
 Windows and door openings are approximate. Whilst every care is taken in the preparation of this plan,
 please check all dimensions, shapes and compass bearings before making any decisions reliant upon them.