



## 7 Palomino Place, TAMWORTH, NSW 2340

### BEAUTIFUL FAMILY HOME

Situated in the growing family orientated suburb of Hillvue, sits this excellently designed and built family home that is a must to inspect for first home buyers, families, professional couples and the smart investor looking to add a set and forget to their portfolio. Convenience is a key bonus to this property, with countless amenities close by including Longyard homemakers centre, AELEC, TRECC, Sports-dome and Longyard golf course all within a short drive from the property. The home itself has been designed to allow for space and relaxation, with a large living and dining area, beautifully designed kitchen and large bedrooms, it truly is a great opportunity for a family to walk straight in and enjoy what is on offer. An inspection is highly recommended, contact the agent today to find out more about this property!

#### Additional features

- 706 sqm block size (approx.)
- Top of the line Kitchen which includes, Kleenmaid appliances, including double oven and granite bench tops
- Walk-in robe & ensuite in the master bedroom
- Additional three bedrooms have built-ins

The particulars contained herein are supplied for information only and shall not be taken as a representation in any respect on the part of the vendor or its agent. Interested parties should contact the nominated person or office for full and current details.

**TYPE:** Sold

**INTERNET ID:** L28863578

#### **AUCTION DETAILS**

6:00pm, Thursday August 15th, 2024

#### **CONTACT DETAILS**

**Elders Real Estate  
Tamworth**  
247 Peel Street  
Tamworth, NSW  
02 6766 1666

**Tyson Rennie**  
0402676611

- Ducted reverse cycle air-conditioning
- Rear entertainment area
- Side access to backyard
- 3.3kwh Solar system

7 Palomino Place is being offered via auction on the 15/8/2024, genuine vendors have instructed that the property must be sold.

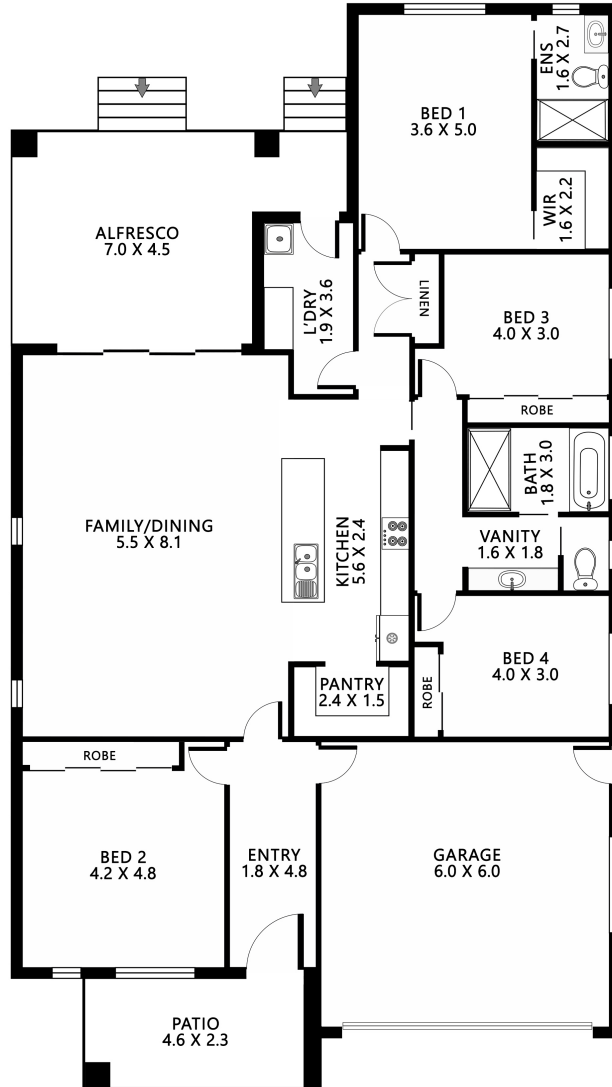
Click here to register for auction: <https://buy.realtair.com/properties/136986>

- Land Area 706.40 square metres
- Building Area: 265.00 square metres
- Bedrooms: 4
- Bathrooms: 2
- Double garage
- Floorboards









**Disclaimer:** Please note this floor plan is for marketing purposes and is to be used as a guide only.  
 Floor plan, furniture, and fixture measurements and dimensions are approximate and are for illustrative purposes only.  
 Dimensions in metres. All efforts have been made to ensure its accuracy at the time of print.

## 7 PALOMINO PLACE, HILLVUE