



2 Streatfield Close, BLAYNEY, NSW 2799

For Sale - 2 Streatfield Close, Blayney

Positioned in a quiet cul-de-sac, this contemporary residence presents an outstanding opportunity to secure a modern family home in immaculate condition. Built just four years ago, the property combines quality craftsmanship with stylish design to deliver a home of comfort, functionality, and elegance.

Key Features:

- Four generously sized bedrooms, all with built-in storage
- Two well-appointed bathrooms, including a private ensuite to the master suite
- Spacious open plan living and dining areas filled with natural light
- Modern kitchen with sleek finishes and premium appliances
- Double lock-up garage with internal access
- Low-maintenance surrounds, ideal for family living and entertaining

With its bright interiors, modern finishes, and convenient location, this property is

The particulars contained herein are supplied for information only and shall not be taken as a representation in any respect on the part of the vendor or its agent. Interested parties should contact the nominated person or office for full and current details.

TYPE: For Sale

INTERNET ID: L31928135

SALE DETAILS

Auction Guide:
\$750,000

CONTACT DETAILS

Elders Emms Mooney
152 William Street
Bathurst, NSW
02 6331 0744

Martin Lyden
0404070391

perfectly suited to families seeking a move-in ready home with enduring appeal.

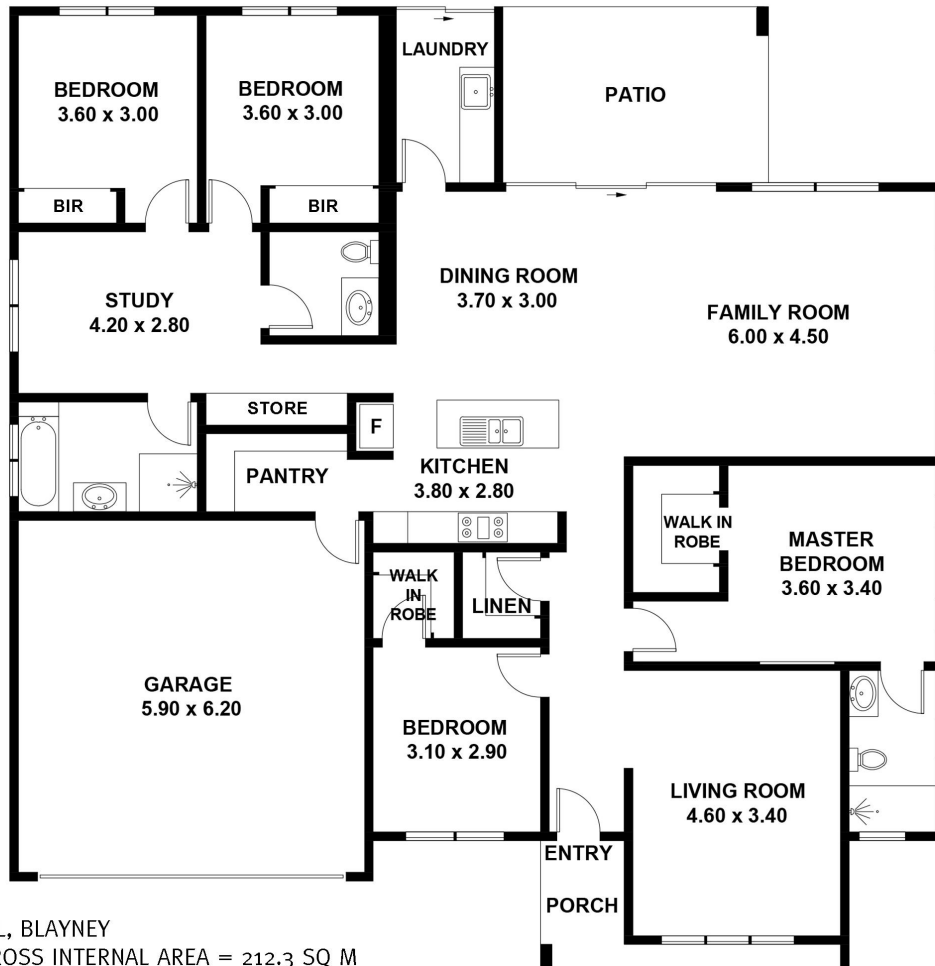
Disclaimer: All information contained herein is gathered from sources we believe reliable. We have no reason to doubt its accuracy; however, we cannot guarantee it.

- Land Area 855.70 square metres
- Bedrooms: 4
- Bathrooms: 2
- Double garage
- Floorboards









This plan is for layout guidance only. Not drawn to scale unless stated.
 Windows and door openings are approximate. Whilst every care is taken in the preparation of this plan,
 please check all dimensions, shapes and compass bearings before making any decisions reliant upon them.



Emms Mooney