

41 Liverpool Street, COWRA, NSW 2794

Immaculate, Low-Maintenance Living in the Heart of Cowra

Set in a well maintained complex, this beautifully presented two bedroom strata villa offers low maintenance living in a convenient central location, just a short stroll to shops, supermarkets, cafes, clubs and medical services.

Key features include;

- Spacious living area with ceiling fan, gas connection and plantation shutters
- Two great sized bedrooms with ceiling fans, built-in wardrobes and shutters
- Zoned ducted reverse cycle air conditioning throughout the home
- Electric kitchen with dishwasher and adjoining dining area
- Block-out blinds in kitchen/dining for added privacy
- Bathroom with shower, separate toilet, and flat access
- Single lock-up garage with automatic door

TYPE: For Sale

INTERNET ID: L35136360

SALE DETAILS

Price Guide: \$450,000 - \$480,000

CONTACT DETAILS

Elders Emms Mooney
152 William Street
Bathurst, NSW
02 6331 0744

Caley Mok
0437007303

- Laundry with built-in storage and internal access to the garage
- Covered private courtyard + front veranda
- Excellent security with window locks, security cameras and screens
- Window awnings for western sun protection and privacy
- Ample linen storage in hallway and living room
- Small water tank + gorgeous established gardens

This immaculately kept home is an ideal opportunity for downsizers seeking a move-in ready property in an ultra-convenient location.

For more information or to arrange your inspection contact listing agents Caley Mok on 0437 007 303 or Hayley Oliver on 0419 595 746 today.

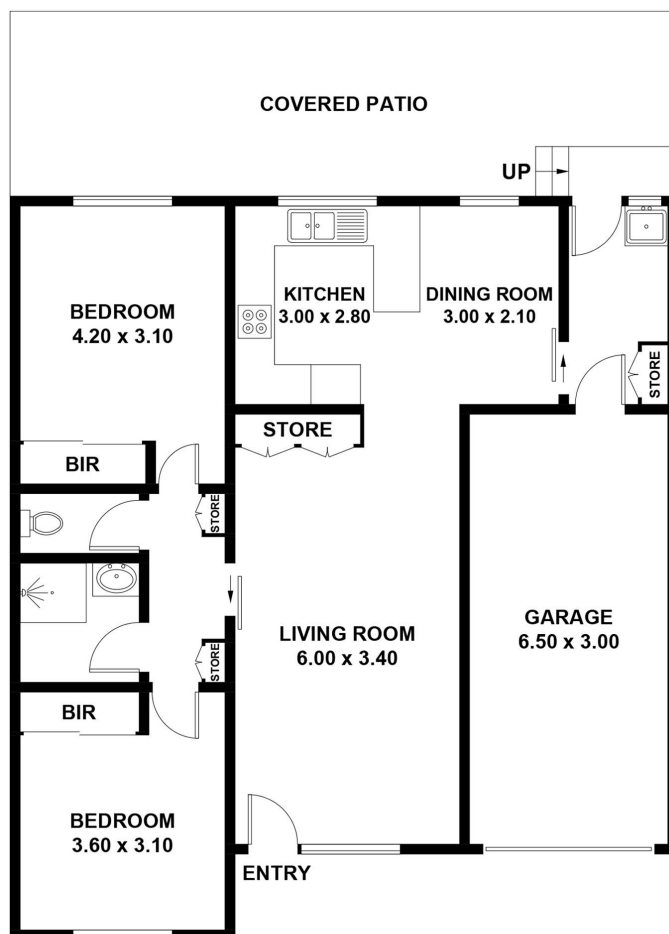
Disclaimer: All information contained herein is gathered from sources we believe reliable. We have no reason to doubt its accuracy, however, we cannot guarantee it.

*approximately

- Bedrooms: 2
- Bathrooms: 1
- Single garage
- Floorboards







3/41 LIVERPOOL STREET
APPROXIMATE GROSS INTERNAL AREA = 98.6 SQ M
(INCLUDING GARAGE)

This plan is for layout guidance only. Not drawn to scale unless stated.
Windows and door openings are approximate. Whilst every care is taken in the preparation of this plan,
please check all dimensions, shapes and compass bearings before making any decisions reliant upon them.



Emms Mooney