



3 Webbers Creek Road, PATERSON, NSW 2421

Spacious Family Home in Prime Location - Packed with Features!

Located just a stone's throw from the local shops, this quality split-level home, built in 2000 by McDonald Homes, offers the perfect blend of comfort, space and convenience for the modern family.

Set on a low-maintenance block, this four-bedroom residence features a well-thought-out design with both formal and informal living areas, plus a huge rumpus room ideal for kids, entertaining or relaxing.

Key Features:

- 4 Bedrooms - Main with air conditioning, ceiling fan, walk-in robe and private ensuite
- Multiple Living Spaces - Formal TV room on top entry with plush carpet, plus large open-plan family areas
- Generous Kitchen - Equipped with dishwasher, electric oven, gas cooktop and ample storage
- Main Bathroom - Includes both bath and shower for family convenience

TYPE: For Sale

INTERNET ID: L35316331

SALE DETAILS

NEW TO MARKET

CONTACT DETAILS

**Elders Real Estate
Dungog**

3/140 Dowling Street
Dungog, NSW
02 4992 1208

Sally Koppers
0438899703

- Energy Efficient - Solar electricity panels help keep bills low
- Double Auto Garage - Plus a huge Colorbond shed offering extra space for storage or hobbies
- Comfortable Year-Round - Air-conditioned, light-filled, and designed for easy living
- Well-Maintained Yard - Low-maintenance landscaping perfect for busy lifestyles
- Pump out Septic
- Downstairs tiled entertaining area or teenagers retreat
- Double glazed

Windows throughout most of home

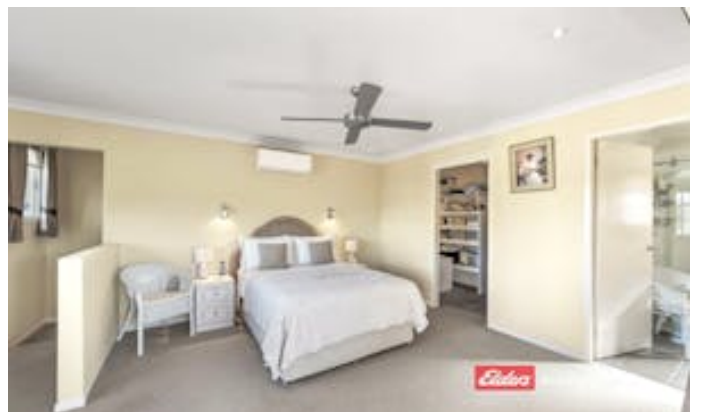
Whether you're upsizing, investing, or searching for your forever home, this property ticks all the boxes. Don't miss the opportunity to secure a home in such a desirable location.

Disclaimer: We have obtained all information herein from sources we believe to be reliable; however, we cannot guarantee its accuracy. Prospective purchasers are advised to carry out their own investigations

Double

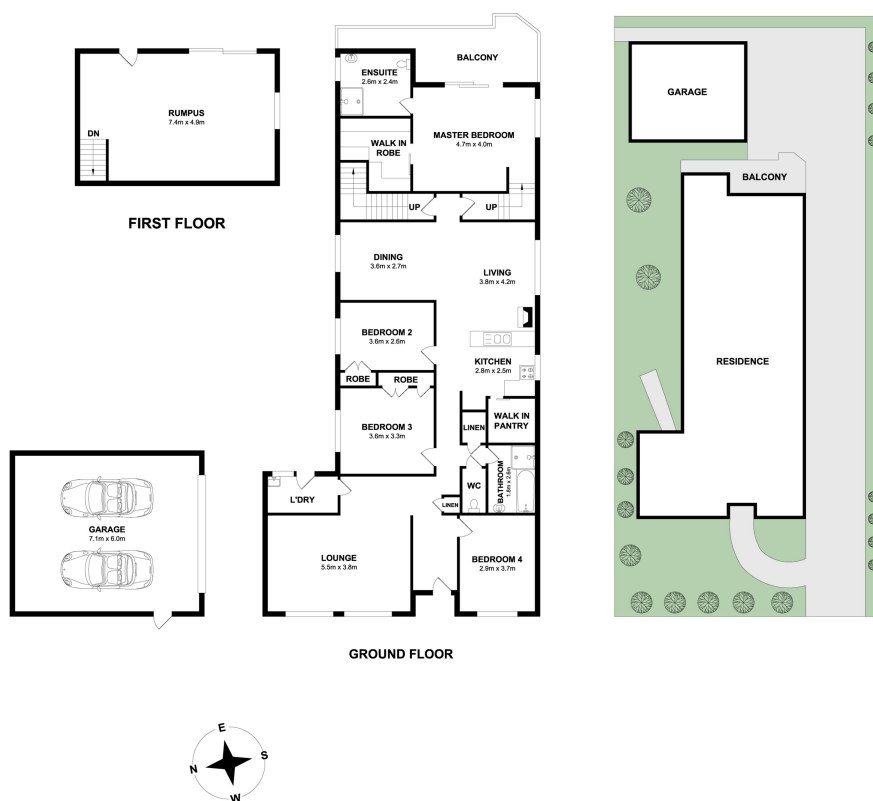
- Land Area 745.00 square metres
- Bedrooms: 4
- Bathrooms: 2
- Double garage
- Floorboards











Measurements are approximate. Not to scale. Illustrative purposes only. Boundaries are approximate.



Real Estate

3 Webbers Crekk Road, Paterson
Total Approx Floor Area 247.36 sq.m