



## 13 Elm Street, TAMWORTH, NSW 2340

### FULLY RENOVATED & READY TO IMPRESS

Welcome to 13 Elm Street, South Tamworth - a beautifully maintained and thoughtfully updated two-bedroom home offering comfort, style, and functionality in a quiet & convenient location.

From the moment you arrive, the manicured gardens and inviting facade set the tone. Step inside to discover light-filled interiors, high ceilings, thoughtful renovation that blends timeless character and modern finishes.

At the heart of the home is a brand-new designer kitchen, complete with stone bench tops, quality appliances, farmhouse sink and ample bench space, all flowing seamlessly into the dining area and sun-drenched rear deck. Whether it's a quiet morning coffee or entertaining guests, this space is designed for easy living.

Both bedrooms are generously sized & have been updated with new carpet. The bathroom also offers modern finishes & a separate toilet for convenience.

Outdoors, the property shines with multiple entertaining areas, beautifully established hedges for privacy, two garden sheds & the 6x3.6m lock-up shed. There's also a

The particulars contained herein are supplied for information only and shall not be taken as a representation in any respect on the part of the vendor or its agent. Interested parties should contact the nominated person or office for full and current details.

**TYPE:** For Sale

**INTERNET ID:** L35730719

#### SALE DETAILS

**\$569,000**

#### CONTACT DETAILS

**Elders Real Estate  
Tamworth**

247 Peel Street  
Tamworth, NSW  
02 6766 1666

**Tyson Rennie**  
0402676611

covered carport, concrete driveway, and side access - perfect for the caravan or trailer.  
13 Elm Street has been tastefully renovated to suit first home buyers, families & investors, making an inspection of this home is highly recommended.

#### Additional features

- . 632sqm parcel of land
- . Fully renovated laundry
- . Reverse cycle split systems for heating & cooling
- . Solar
- . Close to shops & schools
- . Rental appraisal available upon request
- . Council rates \$2,748 per annum
  - Land Area 701.90 square metres
  - Bedrooms: 2
  - Bathrooms: 1
  - Single carport
  - Floorboards

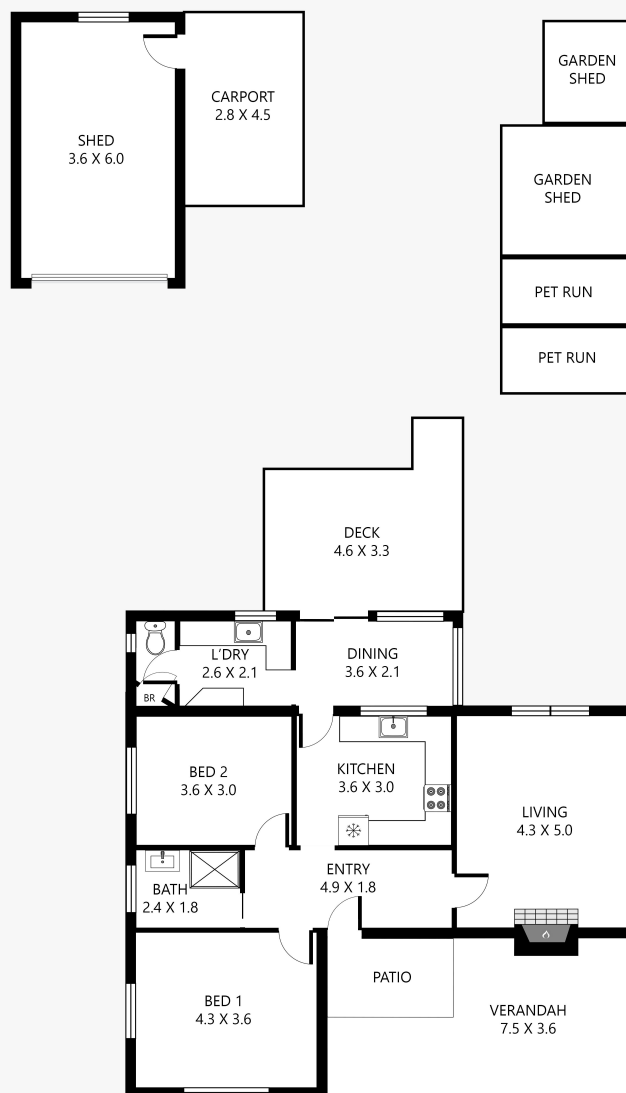








## 13 Elm Street, South Tamworth



Disclaimer: This plan is not to scale and is for illustrative purposes only. Measurements are approximate only. Placement of doors, windows and all other items are approximate. Elders gives no guarantee or warranty as to the accuracy or layout. Any person using this information should rely on their own enquiries.