



4 Regal Park Drive, TAMWORTH, NSW 2340

A Home That Fits The Whole Family

Set on a generous block in a quiet Oxley Vale street, 4 Regal Park Drive offers impressive space, practical design and an easy-going lifestyle that suits the whole family.

The tiled open-plan kitchen, living and dining area form the heart of the home, bright, inviting and designed for connection. The kitchen offers ample bench space, modern appliances and a central island that makes everyday living and entertaining easy. The adjoining living area is generous and flexible, with plenty of room for family gatherings or quiet nights in.

There are six well-proportioned bedrooms, including a private master with ensuite and walk-in robe. The remaining bedrooms provide excellent versatility, perfect for kids, guests or a home office, all supported by a tidy main bathroom and separate laundry.

Outside, the covered alfresco area is ideal for outdoor dining, while the expansive side yard offers loads of potential. It's a great space for kids and pets or the chance to add fencing, a shed or further landscaping to suit your lifestyle.

TYPE: For Sale

INTERNET ID: L36041466

SALE DETAILS

\$659,000

CONTACT DETAILS

**Elders Real Estate
Tamworth**

247 Peel Street
Tamworth, NSW
02 6766 1666

Jayden Newberry
0428389790

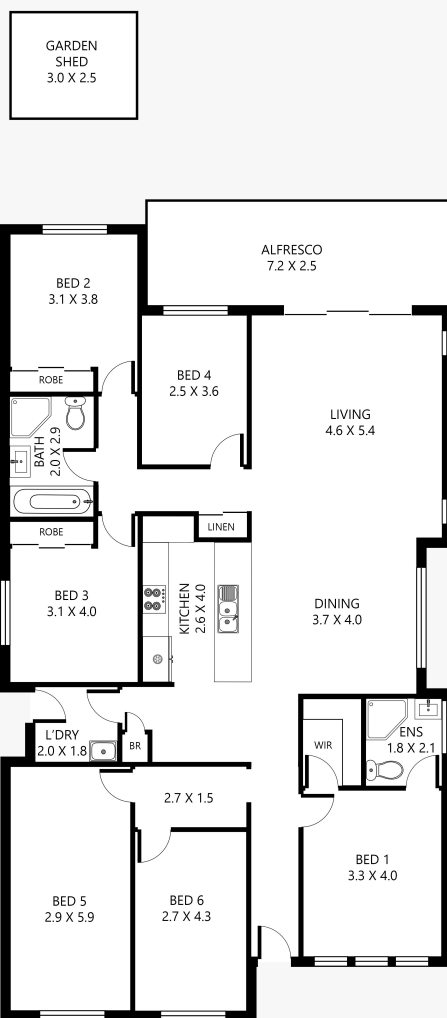
Set in a quiet street just minutes from local schools, parks, shops and the Tamworth CBD, this property combines easy family living with outstanding convenience.

- Land Area 802.00 square metres
- Bedrooms: 6
- Bathrooms: 2
- Ensuite
- Floorboards





4 Regal Park Drive, Oxley Vale



Disclaimer: This plan is not to scale and is for illustrative purposes only. Measurements are approximate only. Placement of doors, windows and all other items are approximate. Elders gives no guarantee or warranty as to the accuracy or layout. Any person using this information should rely on their own enquiries.