



21 The Patio, TAMWORTH, NSW 2340

QUALITY HOME IN "THE HEIGHTS"

Set in the sought-after Heights Estate, 21 The Patio presents a beautiful brick home designed with space, comfort, and family living in mind, all positioned on a 503.20sqm* (approx.) block.

This well-appointed residence offers four spacious bedrooms and two bathrooms, with all bedrooms featuring built-in wardrobes. The main suite provides a private retreat, complete with a walk-in wardrobe leading through to a spacious ensuite boasting double vanities and ample room to unwind.

Designed for modern family living, the home showcases multiple living zones, including a dedicated theatre room, family room and study, along with a separate kids' retreat that offers its own distinct living space, thoughtfully positioned to service two bedrooms on the opposite side of the home, creating the ideal balance of connection and privacy.

The alfresco area is perfect for entertaining, seamlessly connecting to the kitchen while welcoming an abundance of natural light, making it a warm and inviting space to gather with family and friends.

TYPE: Auction

INTERNET ID: L36217840

AUCTION DETAILS

6:00pm, Thursday June 4th, 2026

CONTACT DETAILS

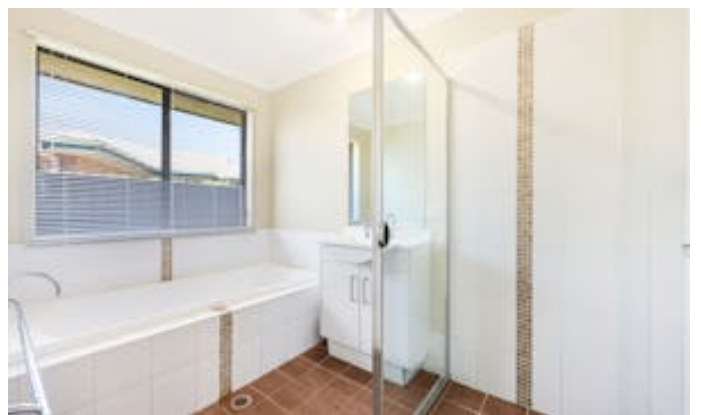
**Elders Real Estate
Tamworth**

247 Peel Street
Tamworth, NSW
02 6766 1666

Glenda Douglas
0428298524

- Land Area 503.20 square metres
- Bedrooms: 4
- Bathrooms: 2
- Double garage
- Ensuite
- Floorboards







21 The Patio, Hillvue

GARDEN SHED



Disclaimer: This plan is not to scale and is for illustrative purposes only. Measurements are approximate only. Placement of doors, windows and all other items are approximate. Elders gives no guarantee or warranty as to the accuracy or layout. Any person using this information should rely on their own enquiries.