

## 'Hart House' 90 Liverpool Street, COWRA, NSW 2794

### A Landmark Residence of Heritage, Craftsmanship & Timeless Elegance

An enduring icon of Cowra's architectural landscape, Hart House is one of the region's most admired and significant residences.

Built circa 1927 by local identity Henry Hart and designed by noted architect J.E. Lundholm, this double-brick residence represents one of the finest examples of Arts and Crafts architecture in the district.

Behind its commanding facade, the home reveals layers of history, from the handcrafted Queensland maple staircase to original leadlight cabinetry and ornate plasterwork in the formal rooms. Every element was crafted to serve both aesthetic and practical purpose, with double-brick construction and natural insulation ensuring enduring comfort and craftsmanship.

Across two expansive levels, the home offers five bedrooms (three with ensuites), formal drawing and dining Rooms, a sunroom and study. These spaces are enriched with heritage details, handcrafted maple joinery, leadlight cabinetry, and original Bakelite switches, balanced with modern comforts including updated lighting and renovated bathrooms that thoughtfully blend original tiles with functional updates.

The particulars contained herein are supplied for information only and shall not be taken as a representation in any respect on the part of the vendor or its agent. Interested parties should contact the nominated person or office for full and current details.

**TYPE:** For Sale

**INTERNET ID:** L36294659

#### SALE DETAILS

**Contact Agent**

#### CONTACT DETAILS

**Elders Emms Mooney**  
152 William Street  
Bathurst, NSW  
02 6331 0744

**Adam Gambrill**  
0417533453

Outdoors, the rare half-acre grounds have been transformed into a private sanctuary, offering multiple garden rooms for entertaining, relaxation, and family living. From the formal rose-lined front garden and Portuguese fountain courtyard to the pergola-shaded entertaining terrace and elevated pool deck with sweeping Lachlan Valley views, each space is designed for both beauty and function. Established citrus, olive and stone fruit trees are woven among structured beds of flowering perennials, bringing colour, shade and seasonal interest throughout the year. This is a substantial town-centre holding that offers generous space, privacy, and lifestyle appeal, all within walking distance to Cowra's shops, caf  s and services.

With nearly a century of provenance recorded by the Cowra Historical Society, Hart House is more than a residence, it is a living landmark, lovingly restored and awaiting its next custodian.

For more information or to arrange your inspection contact listing agents Adam Gambrill on 0417 533 453 or Caley Mok on 0437 007 303.

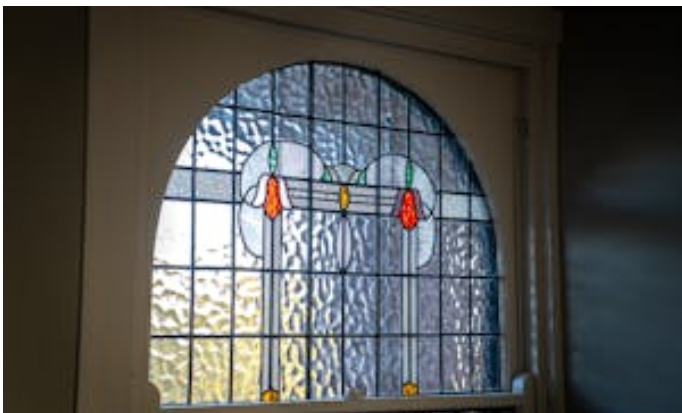
Disclaimer: All information contained herein is gathered from sources we believe reliable. We have no reason to doubt its accuracy, however, we cannot guarantee it.

- Land Area 2,112.00 square metres
- Building Area: 315.00 square metres
- Bedrooms: 5
- Bathrooms: 5
- Double garage
- Floorboards







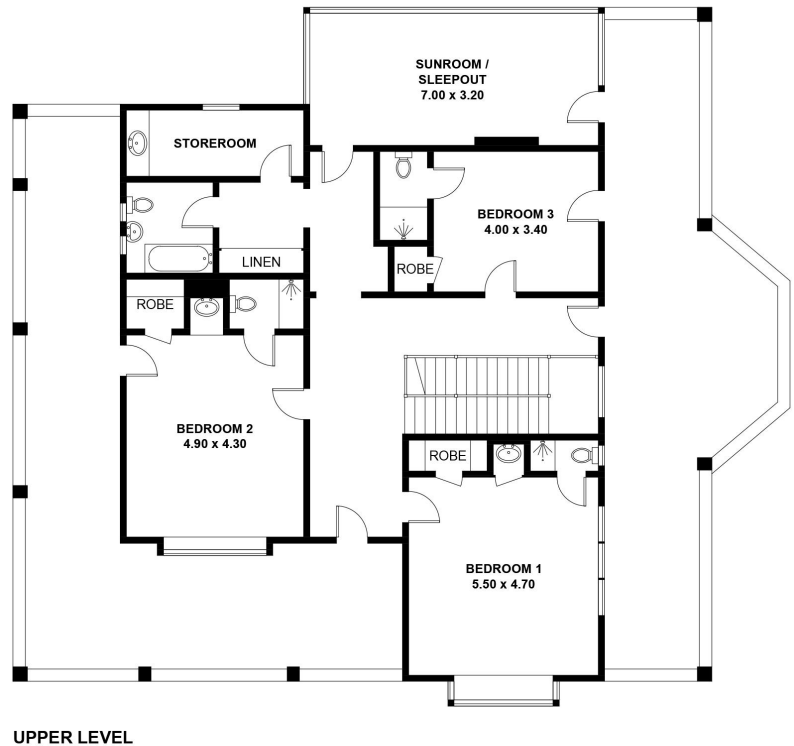
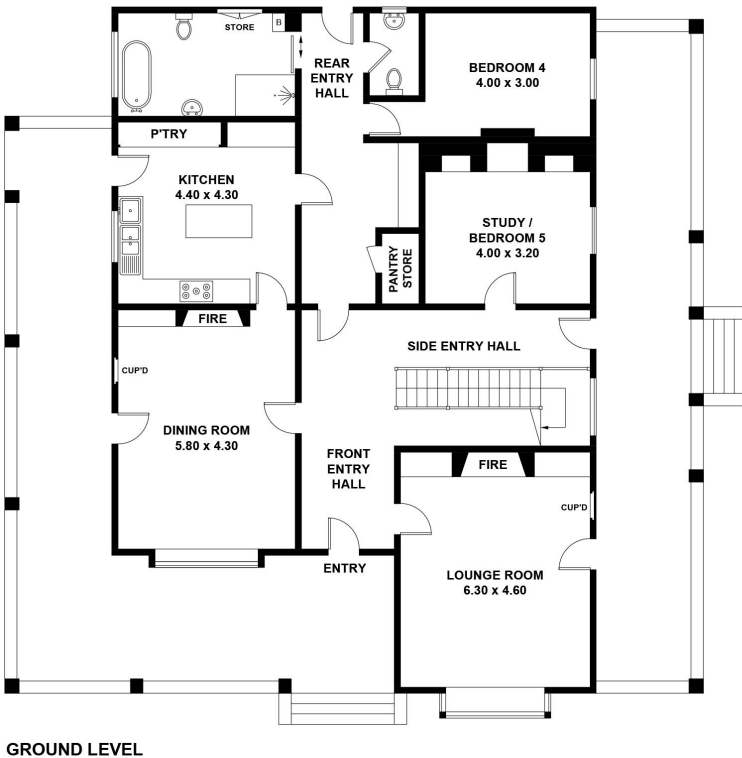












Hart House, Cowra  
APPROXIMATE GROSS INTERNAL AREA = 314.6 SQ M

This plan is for layout guidance only. Not drawn to scale unless stated.  
Windows and door openings are approximate. Whilst every care is taken in the preparation of this plan,  
please check all dimensions, shapes and compass bearings before making any decisions reliant upon them.



Emms Mooney