



## 1697 Duckmaloi Road, HAMPTON, NSW 2790

"Bindoon" - Privacy on Bindo Creek!

**47.11 hectares, 116.40 acres**

Tucked away in this beautiful and private setting, with stunning northerly views and a picturesque stretch of Bindo Creek along its boundary, you will find 'Bindoon' - the lifestyle haven you've been searching for. Set across 116.4\* acres with 1,550\* metres of creek frontage, this exceptional property features a charming two-storey, four-bedroom, two-bathroom home with additional cabin accommodation. Located a short 17\* kms from the thriving inland township of Oberon, and an easy 165\* km drive from Sydney's CBD, Bindoon is not one to miss in this tightly held region of the Central Tablelands.

- Set on 47.12\* Ha (116.4\* Acres) combining cleared country, sheltered pockets and stands of native bushland - ideal for cattle, horses or sheep, or simply to enjoy the peace and tranquillity of your own private sanctuary.
- 1,550\* metres of beautiful Bindo Creek frontage - a highly regarded trout fishing creek with clear running waters, many fishing spots, kayaking, shaded stretches, and picnic areas that create endless recreational appeal. You may even be lucky enough to spot one of the many platypus that call this creek home.

**TYPE:** Auction

**INTERNET ID:** L36490654

### **AUCTION DETAILS**

10:30am, Thursday October 30th, 2025

### **CONTACT DETAILS**

**Elders Emms Mooney**  
152 William Street  
Bathurst, NSW  
02 6331 0744

**Dallas Booth**  
0427668335

- The stunning stone lined driveway leads you to the Charming two-storey home -featuring four bedrooms and two bathrooms, ready to be transformed into your dream family home, weekend retreat or lifestyle escape.
- Northerly aspect captures sweeping rural views and year-round sunlight.
- Two bedrooms upstairs with bathroom and sitting room.
- Generous open-plan living with light-filled spaces designed for comfort and practicality.
- Slow combustion fireplace and split system air conditioning, offering natural warmth throughout the cooler months and comfort no matter the season.
- The home is set amongst the lovely established garden and towering native and coniferous trees, really adding to its private appeal. The garden has many different flowers and shrubs that are just about to embrace spring and come full bloom.
- Cabin accommodation provides versatility for family, friends or potential short-stay income. The cabin has power connected, plumbing installed and is awaiting completion to recognise its full potential.
- Two bay colorbond shed with power connected.
- 3\* Dams add to the creek frontage for stock water
- Set of cattle yards in place and useable.
- Positioned at an elevation of 1000\*m ASL you will enjoy a genuine cooler climate with occasional winter snowfall.
- All-weather access and a private setting within easy reach of Oberon, Lithgow and a
- Surrounded by the region's natural attractions - Mayfield Garden, Jenolan Caves, Kanangra Walls and nearby villages, caf  s and country pubs.

Rarely does the chance to acquire a property of this calibre present itself - with stunning creek frontage, versatile land, a comfortable home and cabin all found in utmost of private settings. 'Bindoon' is the complete package: a rural sanctuary, an astute lifestyle investment, and an idyllic country retreat all in one. Don't miss this rare opportunity - book your inspection today!!

Disclaimer: The information provided in this advertisement is deemed reliable but not guaranteed. Prospective buyers are advised to conduct their own inspections and due diligence.

- Land Area 47.105409 hectares
- Bedrooms: 4
- Bathrooms: 2



**HOMESTEAD**

<b>Bedrooms</b>	4
<b>Bathrooms</b>	2

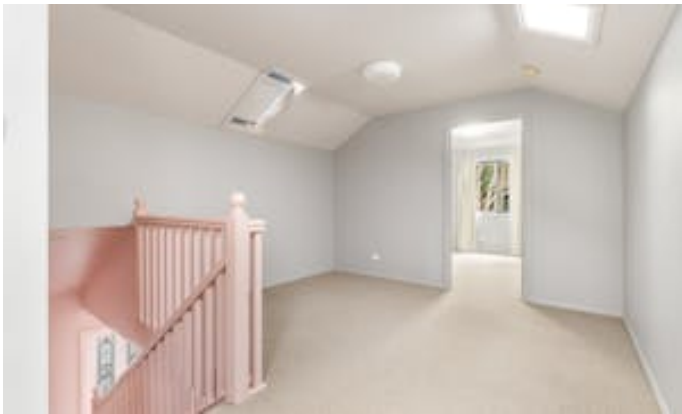




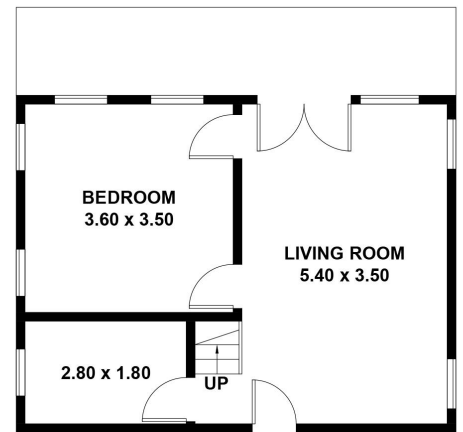
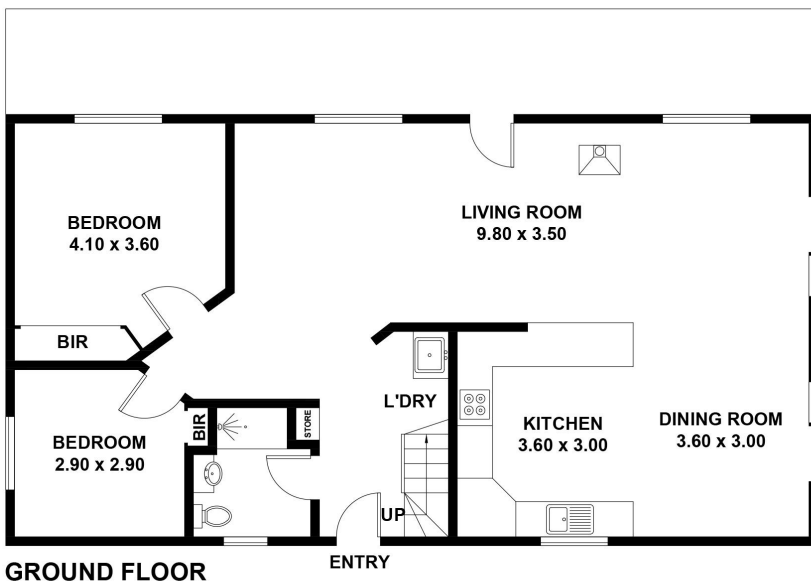
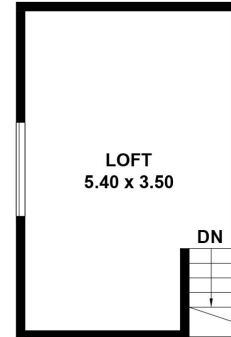
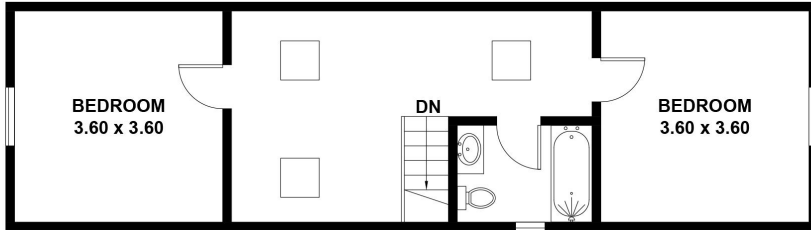












**BINDOON** 1697 DUCKMALOI ROAD, HAMPTON  
 APPROXIMATE GROSS INTERNAL AREA = 144.3 SQ M  
 COTTAGE = 58.7 SQ M  
 TOTAL = 203.0 SQ M

This plan is for layout guidance only. Not drawn to scale unless stated.  
 Windows and door openings are approximate. Whilst every care is taken in the preparation of this plan,  
 please check all dimensions, shapes and compass bearings before making any decisions reliant upon them.