



2 Koala Road, JEERALANG JUNCTION, VIC 3840

Modern Comfort Meets Country Character

Nestled on just under 3 acres of peaceful countryside in sought-after Jeeralang Junction, this versatile lifestyle property offers so much more than meets the eye. With a beautifully presented 4-bedroom, 2-bathroom brick home, plus a fully self-contained brick unit, this is the ideal opportunity for growing families, multi-generational living, or anyone in need of extra independent space.

The main residence is full of warmth and character, with generous proportions throughout, including spacious bedrooms, open-plan living, and a well-appointed, updated kitchen. Step outside and enjoy the outdoor entertaining area, perfect for family entertaining and relaxing weekends.

The separate brick unit offers a private retreat for extended family, guests or potential rental income. Complete with its own bedroom, bathroom, kitchen, laundry and living area - it's self-sufficiency at its best.

Additional features include:

- Split level living.

TYPE: For Sale

INTERNET ID: L36572011

SALE DETAILS

\$980,000 - \$1,060,000

CONTACT DETAILS

Warragul

71 Queen Street
Warragul, VIC
03 5622 3800

Harley Robinson
0400119415

- Ample shedding for storage, hobbies, or home business use.
- Wood heater in main living space, with split system in dining area.
- A concreted driveway for easy access.
- A separate man cave - providing another entertaining space and fire pit.
- Corner allotment with commanding street presence.
- Bush appeal surrounded by wildlife.

If you're looking for space, flexibility, and lifestyle all wrapped into one charming package, 2 Koala Road is a must-see. Whether you're upsizing, need room for extended family, or just want to embrace peaceful semi-rural living without compromise - this one ticks all the boxes.

- Land Area 1.14 hectares
- Building Area: 256.00 square metres
- Bedrooms: 5
- Bathrooms: 3
- 5 car garage
- Floorboards







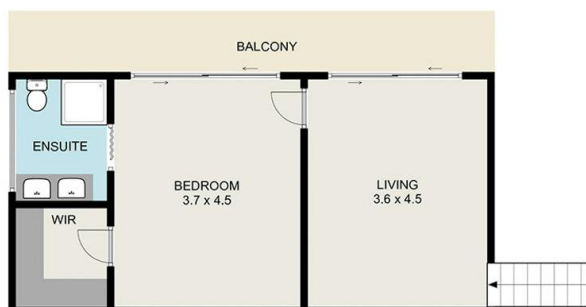


2 Koala Road (Second Dwelling)
Jeeralang Junction

Ground Floor



First Floor



2 Koala Road
Jeeralang Junction

Floor Area: 211m²*

All measurements are approximate*