



411 Peel Street, TAMWORTH, NSW 2340

Central CBD Office Space Tamworth

- Great office space located in the centre of the Tamworth's bustling CBD
- Across the street from Tamworth's main Post Office
- Variety of coffee shops very near allowing the ease for the morning coffee or nibbles
- Front 2 x offices overlook Peel St giving great natural light
- Air conditioned & carpeted throughout
- 2 or 1 undercover car parks available depending on lease terms agreed upon
- Stair access only from the rear carpark area & directly from Peel Street
- Shared WC facilities

Contact Agent today for your personal inspection of the great space.

- Commercial Type:
- Building Area: 131.00 square metres

TYPE: For Lease

INTERNET ID: L37184533

RENTAL DETAILS

Rent / Lease:

[Contact Agent](#)

CONTACT DETAILS

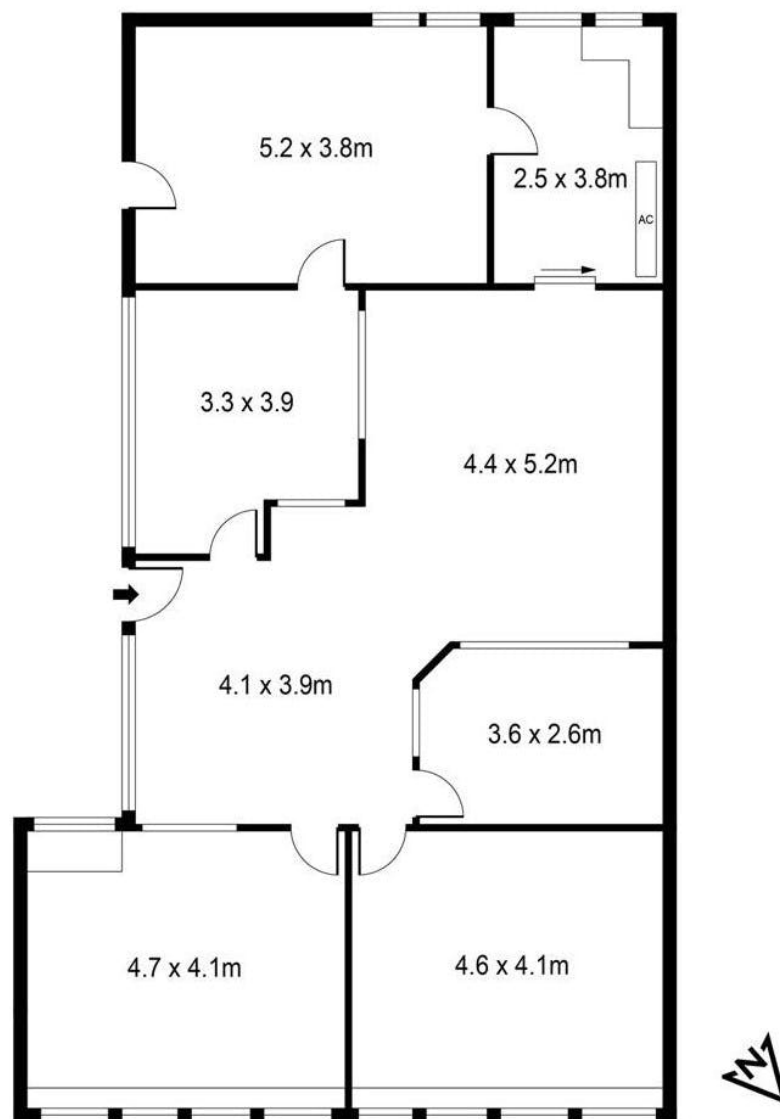
**Elders Real Estate
Tamworth**

247 Peel Street
Tamworth, NSW
02 6766 1666

Justine Saint



Suite 1, 411 Peel St, TAMWORTH



Total Internal Size: 131m²

Plan(s) shown are indicative only of layout. Dimensions are approximate.
No warranties or guarantees are given. Interested parties should rely on their own inquiries.
Floor plan by Protography.net.au