



65 Redfern Street, COWRA, NSW 2794

Charming Renovated Home with Exceptional Shedding & Lifestyle Appeal

Positioned in a convenient pocket of Cowra, 65 Redfern Street presents a beautifully updated home offering comfort, functionality and outstanding additional infrastructure for tradies, hobbyists or investors.

Set on a generous block, this neatly presented residence has been thoughtfully modernised, combining light-filled interiors with easy-care outdoor living and impressive shedding rarely found in residential settings.

Inside, the home features a fresh, contemporary kitchen with island bench and quality finishes, flowing through to a spacious open-plan living and dining zone. Neutral tones, updated flooring and abundant natural light create a welcoming and move-in ready environment.

The living area is complemented by split system comfort, while the layout provides practical separation and everyday functionality.

Step outside and you'll find a secure, low-maintenance backyard with established lawn, paved entertaining area and a covered alfresco zone-ideal for relaxed weekends or

The particulars contained herein are supplied for information only and shall not be taken as a representation in any respect on the part of the vendor or its agent. Interested parties should contact the nominated person or office for full and current details.

TYPE: Sold

INTERNET ID: L39308485

SALE DETAILS

Contact Agent

CONTACT DETAILS

Elders Emms Mooney

152 William Street

Bathurst, NSW

02 6331 0744

Adam Gambrill

0417533453

hosting family and friends.

A standout feature of the property is the large, separate shed with dual roller doors and excellent access, offering ample space for vehicles, storage, or a home workshop setup.

Key Features:

- Renovated kitchen with island bench and modern cabinetry
- Open-plan living and dining with excellent natural light
- Updated interiors with neutral colour palette
- Split system heating and cooling
- Covered outdoor entertaining area
- Secure, low-maintenance yard
- Large shed with dual roller doors and rear lane-style access potential
- Convenient location close to town centre, schools and sporting facilities

Whether you're entering the market, investing, or seeking a property with extra space and versatility, this is a compelling opportunity in a well-connected Cowra location.

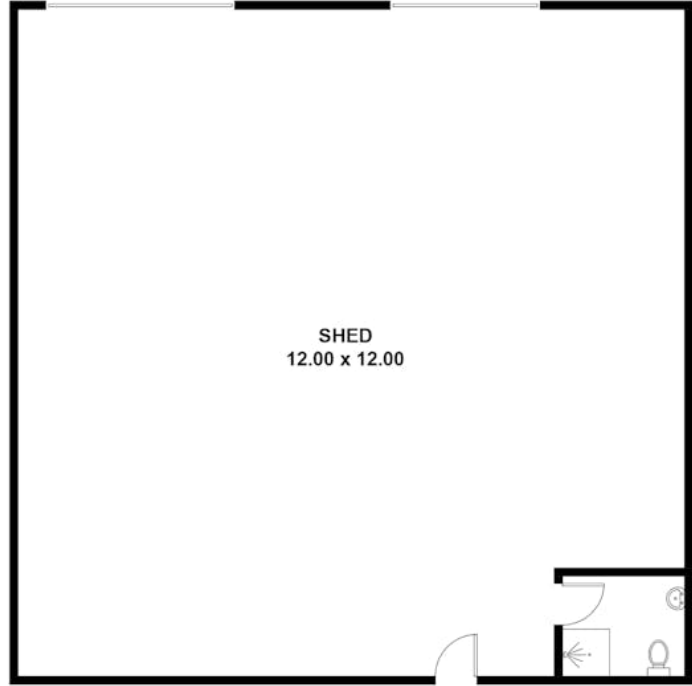
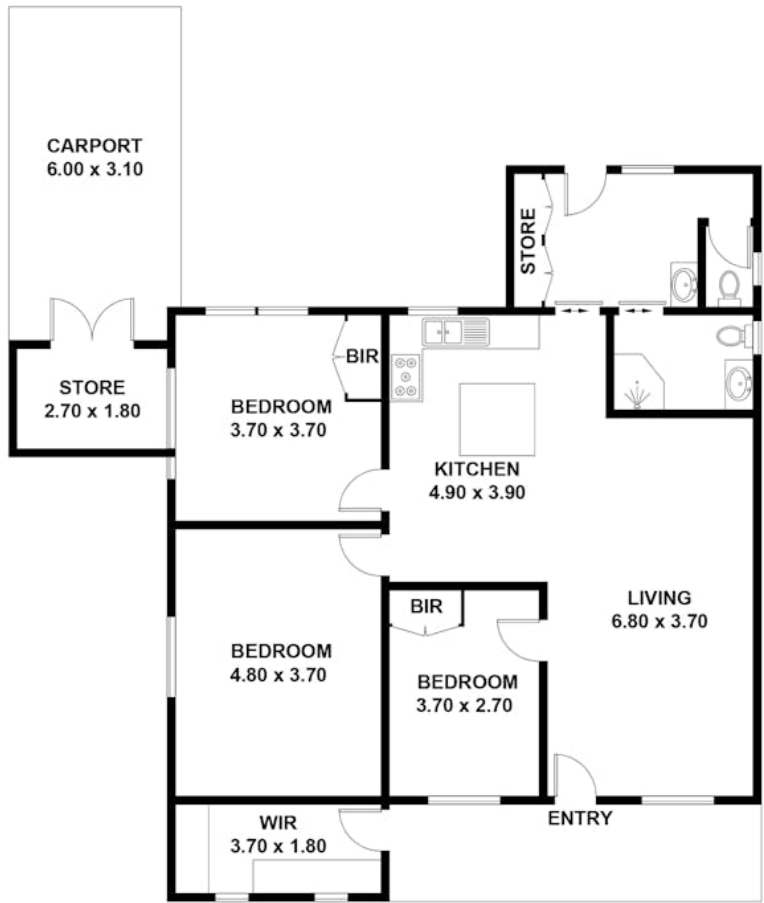
For more information or to arrange your inspection contact the listing Agent, Adam Gambrill on 0417 533 453 today.

Disclaimer: All information contained herein is gathered from sources we believe reliable. We have no reason to doubt its accuracy, however, we cannot guarantee it.

- Land Area 680.47 square metres
- Bedrooms: 3
- Bathrooms: 1
- Double garage
- Single carport
- Floorboards







(NOT SHOWN IN ACTUAL LOCATION / ORIENTATION)

65 REDFERN ST, COWRA
 APPROXIMATE GROSS INTERNAL AREA = 101 SQ M
 OUTBUILDINGS = 155 SQ M
 TOTAL = 256 SQ M



This plan is for layout guidance only. Not drawn to scale unless stated.
 Windows and door openings are approximate. Whilst every care is taken in the preparation of this plan,
 please check all dimensions, shapes and compass bearings before making any decisions reliant upon them.