



6 Ainslie Place, TAMWORTH, NSW 2340

STYLISH, LOW-MAINTENANCE LIVING IN ZAHRA ESTATE

Positioned within the sought-after Zahra Estate, this immaculately presented home delivers the perfect combination of style, comfort and low-maintenance living. Ideally suited to first home buyers, downsizers or professional couples. The property offers modern finishes, practical design and an ultra-convenient location close to shopping, entertainment and sporting facilities. The home features three well-sized bedrooms, two bathrooms and a light-filled open-plan layout designed for easy everyday living. The master bedroom is a standout, complete with a walk-in robe and stylish ensuite featuring double vanities. At the centre of the home, the modern kitchen is fitted with stone benchtops, quality appliances and ample storage, seamlessly connecting to the living and dining areas. Plantation shutters, vinyl flooring and ducted reverse cycle air conditioning further enhance the home's comfort and appeal. Outside, the covered entertainment area provides the ideal space to relax or entertain guests, while rear lane access adds additional practicality and convenience. Neat as a button and presented to an exceptional standard, this is a fantastic opportunity to secure a quality home within one of Hillvue's most desirable estates. Positioned only moments from Tamworth Homespace, AELEC, the Tamworth Sports Dome and the Goonoo Goonoo Commercial Precinct, the location is just as impressive as the home itself.

Additional features

- 442sqm* (approx.) parcel of land

The particulars contained herein are supplied for information only and shall not be taken as a representation in any respect on the part of the vendor or its agent. Interested parties should contact the nominated person or office for full and current details.

TYPE: Auction

INTERNET ID: L40045073

AUCTION DETAILS

6:00pm, Thursday July 16th, 2026

CONTACT DETAILS

**Elders Real Estate
Tamworth**

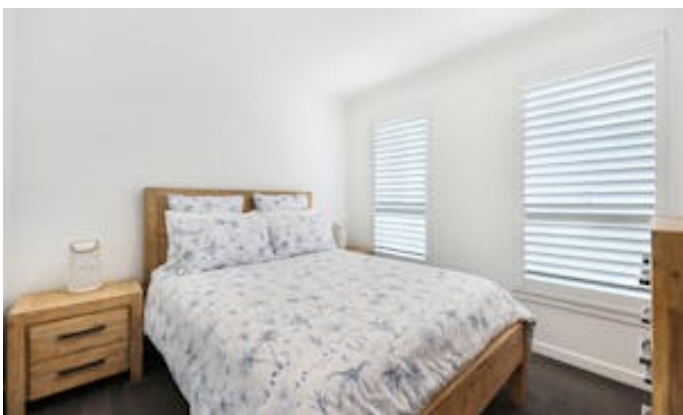
247 Peel Street
Tamworth, NSW
02 6766 1666

Tyson Rennie
0402676611

- Additional two bedrooms have built-ins
- Rental appraisal available upon request
- Building & pest report available upon request
- Council rates \$725 per quarter
- Community title \$375.39 per quarter

Register to bid here: <https://buy.realtair.com/properties/264795>

- Land Area 442.40 square metres
- Bedrooms: 3
- Bathrooms: 2
- Double garage
- Floorboards





16/6 Ainslie Place, Hillvue



Disclaimer: This plan is not to scale and is for illustrative purposes only. Measurements are approximate only. Placement of doors, windows and all other items are approximate. Elders gives no guarantee or warranty as to the accuracy or layout. Any person using this information should rely on their own enquiries.