



318 Armidale Road, TAMWORTH, NSW 2340

MUCH LOVED FAMILY HOME IN EAST ON OFFER

Built high on this 758sqm* (approx.) block in East Tamworth is this lovely brick-and-tile double-storey family home that offers an abundance of storage and space.

The top storey offers four generous bedrooms, three with built-ins and the main with direct access to the main bathroom. There is a second shower in the laundry, along with a bonus second toilet. A lovely big sunroom, formal lounge, beautifully updated galley-style kitchen with a breakfast bar and plenty of storage complete the upper level. The formal dining room sits off the kitchen. The covered outdoor entertaining area is the perfect spot to relax after a long day and enjoy the peaceful surrounds of the low-maintenance lawns and gardens, along with your very own bushland views. Split-system air conditioning provides year-round comfort, while solar panels help reduce electricity bills.

On the ground floor, there is a huge amount of under-house storage, plus a double lock-up garage that could also be used as a large rumpus room, entertaining area or workshop if you don't have many cars to accommodate, as well as a bonus double carport.

This home has been lovingly looked after over the years, but it's time to hand it over to

The particulars contained herein are supplied for information only and shall not be taken as a representation in any respect on the part of the vendor or its agent. Interested parties should contact the nominated person or office for full and current details.

TYPE: Auction

INTERNET ID: L40349736

AUCTION DETAILS

6:00pm, Thursday August 6th, 2026

CONTACT DETAILS

**Elders Real Estate
Tamworth**

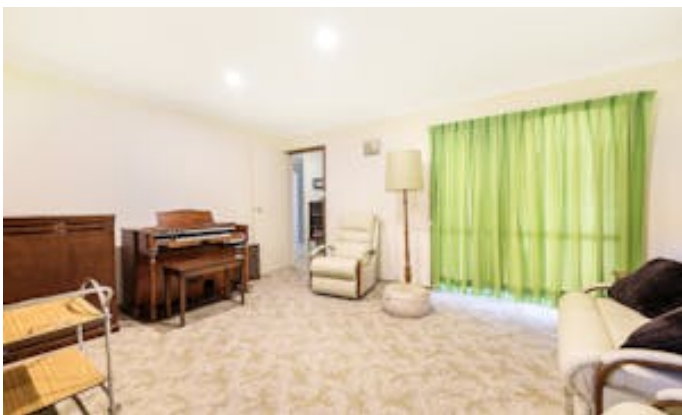
247 Peel Street
Tamworth, NSW
02 6766 1666

Glenda Douglas
0428298524

the next family to love.

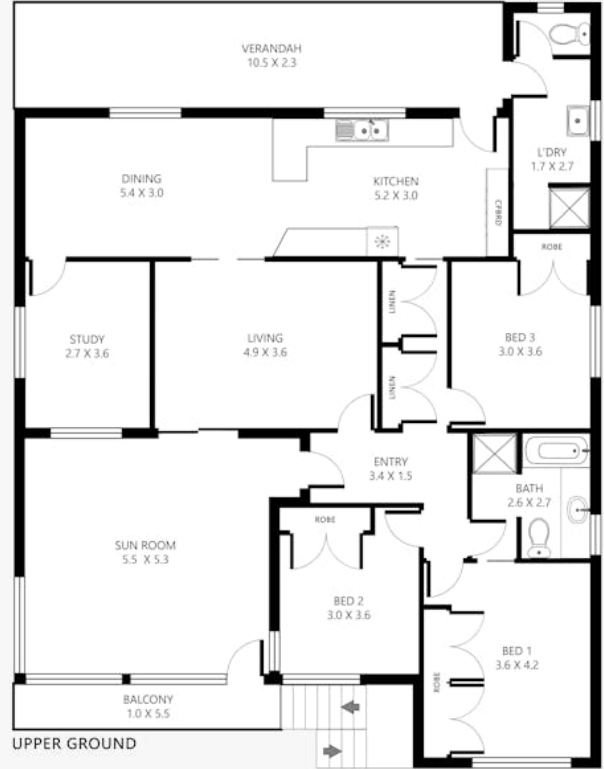
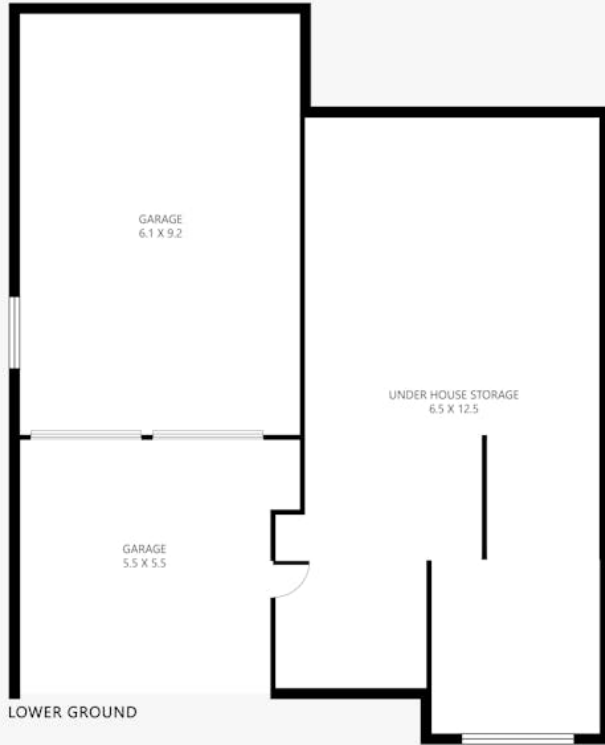
Register to bid here: <https://buy.realtair.com/properties/267910>

- Land Area 758.80 square metres
- Bedrooms: 4
- Bathrooms: 2
- 4 car garage
- Floorboards





318 Armidale Road, East Tamworth



Disclaimer: This plan is not to scale and is for illustrative purposes only. Measurements are approximate only. Placement of doors, windows and all other items are approximate. Elders gives no guarantee or warranty as to the accuracy of layout. Any person using this information should rely on their own enquiries.