



84A Mitchell Street, TAMWORTH, NSW 2340

MODERN, LOW-MAINTENANCE LIVING IN A QUALITY LOCATION

Positioned in a well-regarded pocket of Westdale, this four-year-old home offers a practical and comfortable lifestyle with all the modern conveniences already in place. The home features four well-proportioned bedrooms, including a master with ensuite, along with a functional main bathroom servicing the remaining rooms. Designed with everyday living in mind, the layout provides a seamless flow between the kitchen, dining, and living areas. At the heart of the home is a well-appointed kitchen complete with stone benchtops, ample storage, and quality appliances, providing a space that is both functional and easy to maintain. Year-round comfort is assured with ducted reverse cycle air conditioning, while the low-maintenance design makes the property equally suited to owner occupiers and investors. A fantastic opportunity for first home buyers, investors, and downsizers to secure a quality-built home in a sought-after location.

Additional features

- 436sqm* (approx.) parcel of land
- Built-ins in all bedrooms
- Two living spaces

TYPE: For Sale

INTERNET ID: L40455028

SALE DETAILS

\$679,000

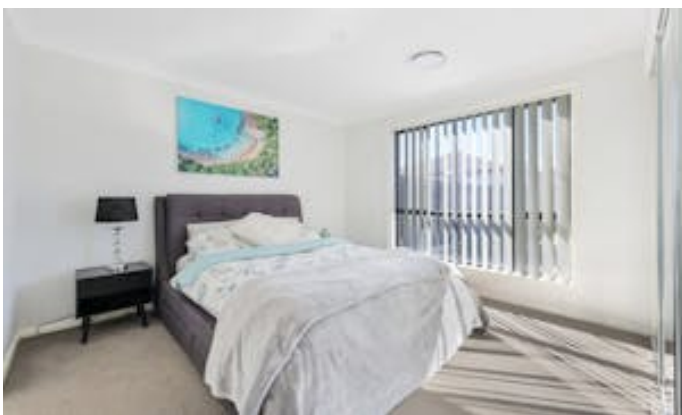
CONTACT DETAILS

**Elders Real Estate
Tamworth**

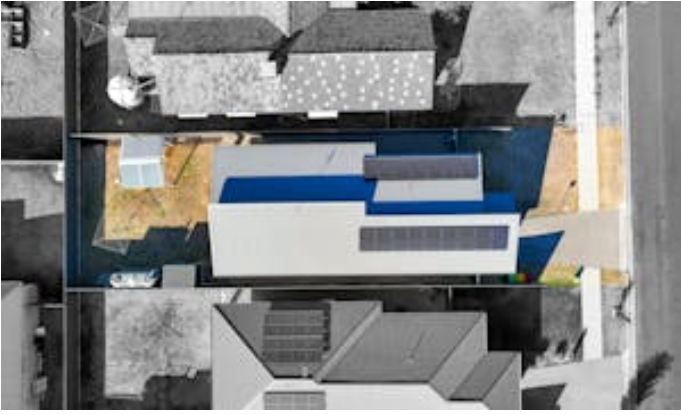
247 Peel Street
Tamworth, NSW
02 6766 1666

Tyson Rennie
0402676611

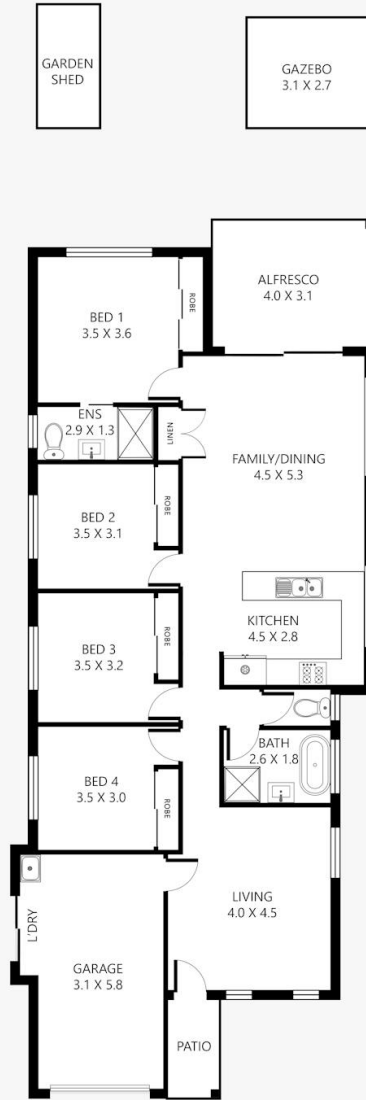
- Outdoor entertaining
- 5kw Solar system
- Council rates \$761* (approx.) per quarter
- Rental appraisal \$600 - \$630 per week
 - Land Area 436.45 square metres
 - Bedrooms: 4
 - Bathrooms: 2
 - Single garage
 - Floorboards







84A Mitchell Street, Westdale



Disclaimer: This plan is not to scale and is for illustrative purposes only. Measurements are approximate only. Placement of doors, windows and all other items are approximate. Elders gives no guarantee or warranty as to the accuracy or layout. Any person using this information should rely on their own enquiries.