

20 Gilbert Drive, TAMWORTH, NSW 2340

Spacious, Convenient & Ready for Modern Living

Positioned in the popular suburb of Westdale, this beautifully presented four-year-old home delivers modern comfort, thoughtful design, and effortless family living.

Welcomed by a stunning wide timber entry door, the home opens to a stylish and functional layout featuring four bedrooms, including a spacious main suite privately positioned away from the remaining bedrooms. Complete with a walk-in wardrobe and a beautifully appointed ensuite, the master bedroom offers the perfect parents' retreat.

The remaining three bedrooms are serviced by a well-appointed main bathroom featuring stylish black fixtures and a clean contemporary design. Positioned amongst these bedrooms is a separate rumpus room, providing the ideal space for a children's retreat, playroom, or additional living area. Designed with both practicality and style in mind, the kitchen features a spacious walk-in pantry complete with bench space and power points, perfect for keeping appliances tucked away while maintaining clean and uncluttered kitchen benches. Year-round comfort is assured with ducted reverse cycle air conditioning throughout the home.

Stepping outside, the home continues to impress with side access, plenty of room for entertaining, and a spacious backyard offering the perfect space for children and pets

The particulars contained herein are supplied for information only and shall not be taken as a representation in any respect on the part of the vendor or its agent. Interested parties should contact the nominated person or office for full and current details.

TYPE: For Sale

INTERNET ID: L40556152

SALE DETAILS

\$709,000

CONTACT DETAILS

**Elders Real Estate
Tamworth**
247 Peel Street
Tamworth, NSW
02 6766 1666

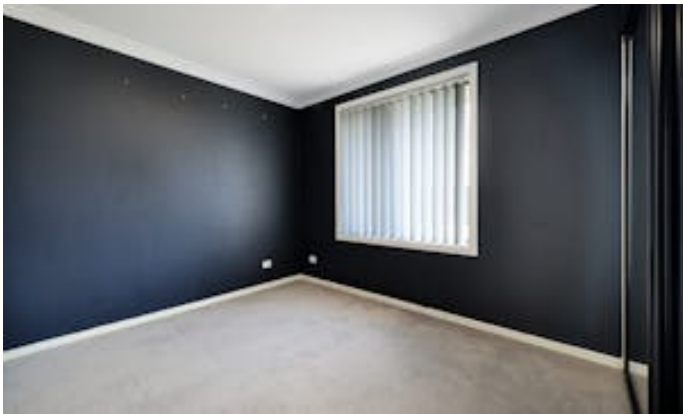
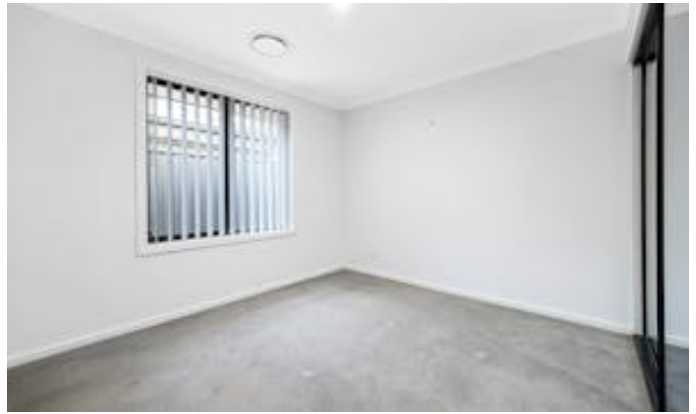
Hayley Flemming
0498546523

to run and play.

Whether you are a first home buyer, growing family, or savvy investor, this quality Westdale home presents an outstanding opportunity to secure modern living in a sought-after location.

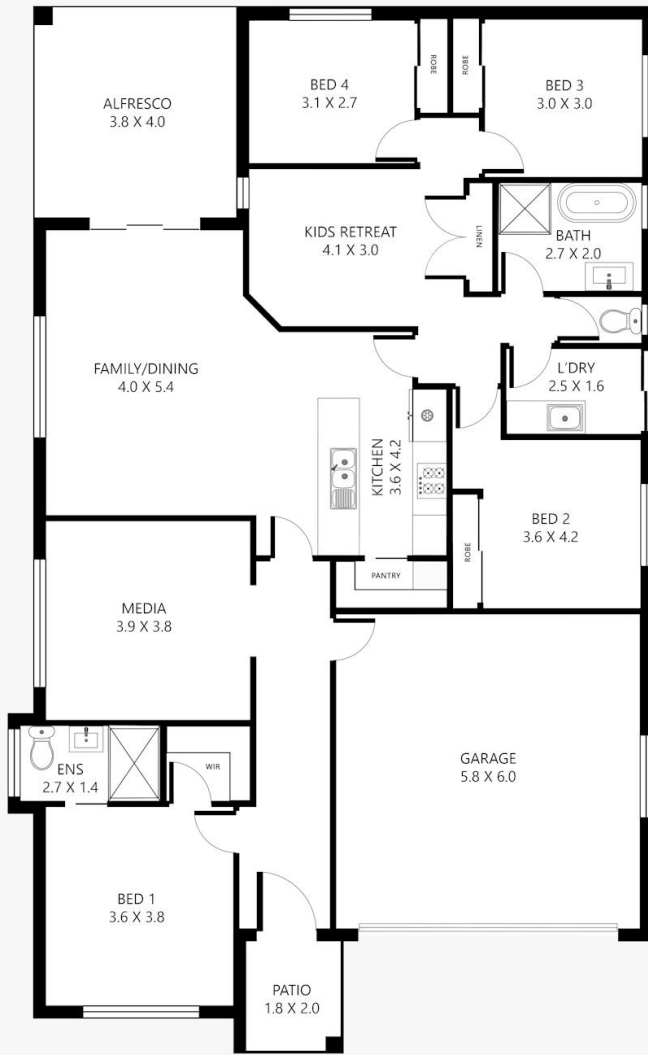
- Land Area 601.00 square metres
- Bedrooms: 4
- Bathrooms: 2
- Double garage
- Floorboards







20 Gilbert Drive, Westdale



Disclaimer: This plan is not to scale and is for illustrative purposes only. Measurements are approximate only. Placement of doors, windows and all other items are approximate. Elders gives no guarantee or warranty as to the accuracy or layout. Any person using this information should rely on their own enquiries.