

2656 Reg Hailstone Way, WOODSTOCK, NSW 2793

'Ta Shimmy' - Your own Private Rural Retreat

202.34 hectares, 499.99 acres

Escape to your own private rural retreat with 'Ta Shimmy' - an exceptional 500-acre lifestyle holding just five minutes from the Wyangala Dam boat ramp and Wyangala Village. Offering the perfect balance of recreation, tranquillity and productivity, this is the ultimate weekender, lifestyle escape or grazing opportunity.

Set amongst picturesque rolling country with breathtaking views over Wyangala Dam and beyond, 'Ta Shimmy' delivers a rare opportunity to enjoy wide open spaces, privacy and natural beauty in one remarkable location. A seasonal creek meanders through the property, complete with natural rock pools and abundant native wildlife, creating the perfect backdrop for camping, motorbike riding, swimming, fishing or simply unwinding with family and friends.

Designed with both comfort and practicality in mind, the property features fully equipped shed accommodation and a modern two-stand shearing shed, making it ideal for extended stays, buiding entitlement already in place, farm operations or future expansion. With fencing in generally good order and steel sheep yards already established, the property is well suited to grazing livestock while still maintaining its

TYPE: For Sale

INTERNET ID: L40843695

SALE DETAILS

Price Guide: \$950,000 - \$1,050,000

CONTACT DETAILS

Elders Emms Mooney
152 William Street
Bathurst, NSW
02 6331 0744

Scott Catlin
0403968384

relaxed lifestyle appeal.

Whether you're searching for a rural holding, a recreational escape or the ultimate lifestyle block close to the water, 'Ta Shimmy' is a property that truly captures the best of country living.

Contact us today to arrange an inspection.

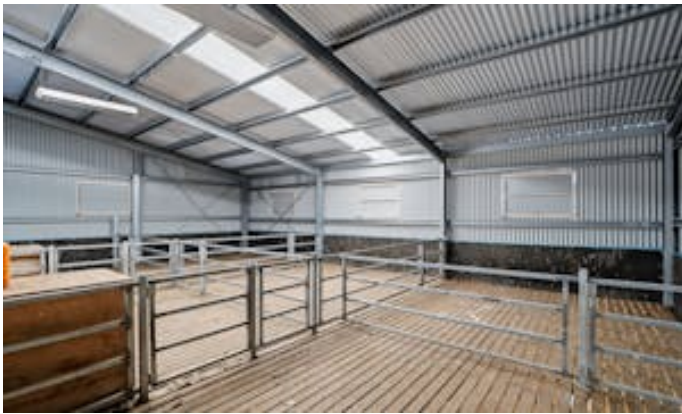
Disclaimer: All information contained herein is gathered from sources we believe to be reliable. However, we cannot guarantee its accuracy and interested parties should rely on their own enquiries. Figures, boundaries and details are subject to change without notice.

- Land Area 202.342821 hectares
- Bedrooms: 1
- Bathrooms: 1

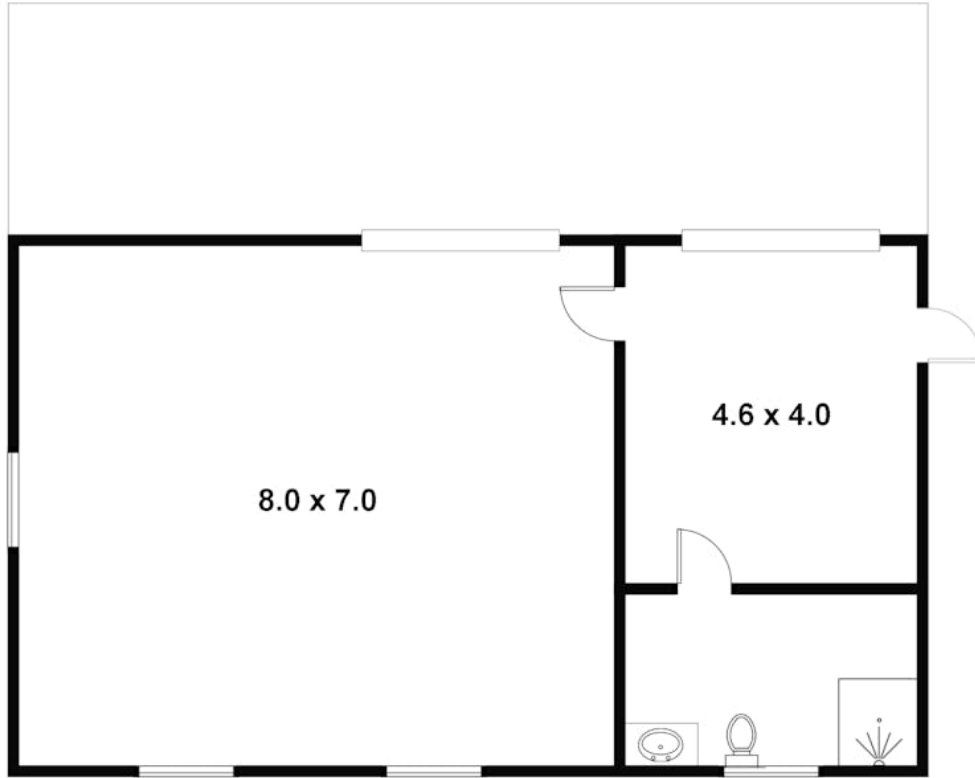
HOMESTEAD

Bedrooms	1
Bathrooms	1









2656 Reg Hailstone Way, Wyangala
Approx Internal Area = 84SQM

This plan is for layout guidance only. Not drawn to scale unless stated.
Windows and door openings are approximate. Whilst every care is taken in the preparation of this plan,
please check all dimensions, shapes and compass bearings before making any decisions reliant upon them.