



6 Boomerang Road, MILLTHORPE, NSW 2798

Landmark Millthorpe Opportunity

An outstanding opportunity to secure a landmark property in the heart of Millthorpe. Positioned on a substantial 3,762.25sqm corner block, the scope and potential here are exceptional.

The property comprises the original double brick residence, offering a true step back in time. Currently configured with five bedrooms, two living areas, two kitchens and two bathrooms, the home presents an ideal renovation opportunity.

Overlooking Redmond Oval, the improvements also include a huge 16.4m x 19.4m lock-up shed and a 6m x 6m lock-up carport, providing excellent infrastructure from the outset.

With its generous size and current zoning, the property is equally suited to future development or subdivision potential (STCA).

A rare piece of Millthorpe real estate with few comparable offerings, the property is being sold to finalise an estate and will be offered via Public Auction on 26 June 2026.

TYPE: Auction

INTERNET ID: L40910773

AUCTION DETAILS

10:30am, Friday June 26th, 2026

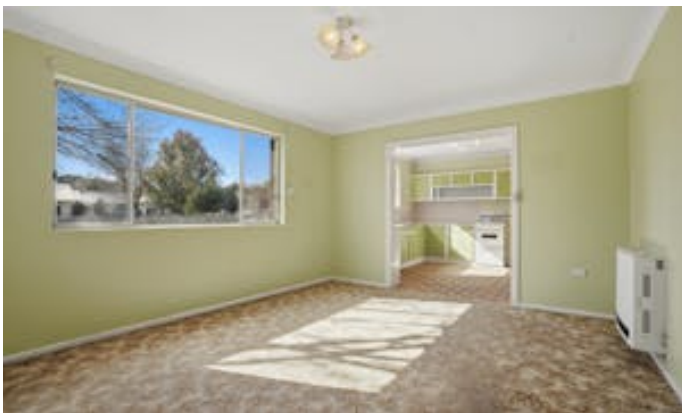
CONTACT DETAILS

Elders Emms Mooney
152 William Street
Bathurst, NSW
02 6331 0744

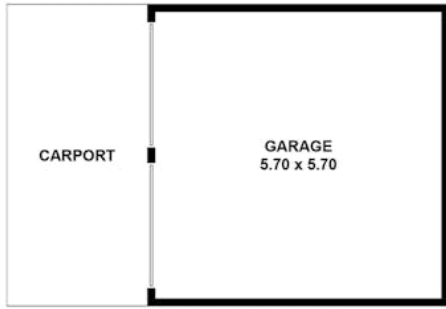
Ben Redfern
0457770062

Disclaimer: All information contained herein is gathered from sources we believe reliable. We have no reason to doubt its accuracy; however, we cannot guarantee it.

- Land Area 3,762.25 square metres
- Bedrooms: 5
- Bathrooms: 2
- Double garage
- Floorboards







(NOT SHOWN IN ACTUAL LOCATION / ORIENTATION)



6 BOOMERANG ROAD, MILLTHORPE
 APPROXIMATE GROSS INTERNAL AREA = 199.4 SQ M
 GARAGE = 32.5 SQ M
 TOTAL = 231.9 SQ M

This plan is for layout guidance only. Not drawn to scale unless stated.
 Windows and door openings are approximate. Whilst every care is taken in the preparation of this plan,
 please check all dimensions, shapes and compass bearings before making any decisions reliant upon them.